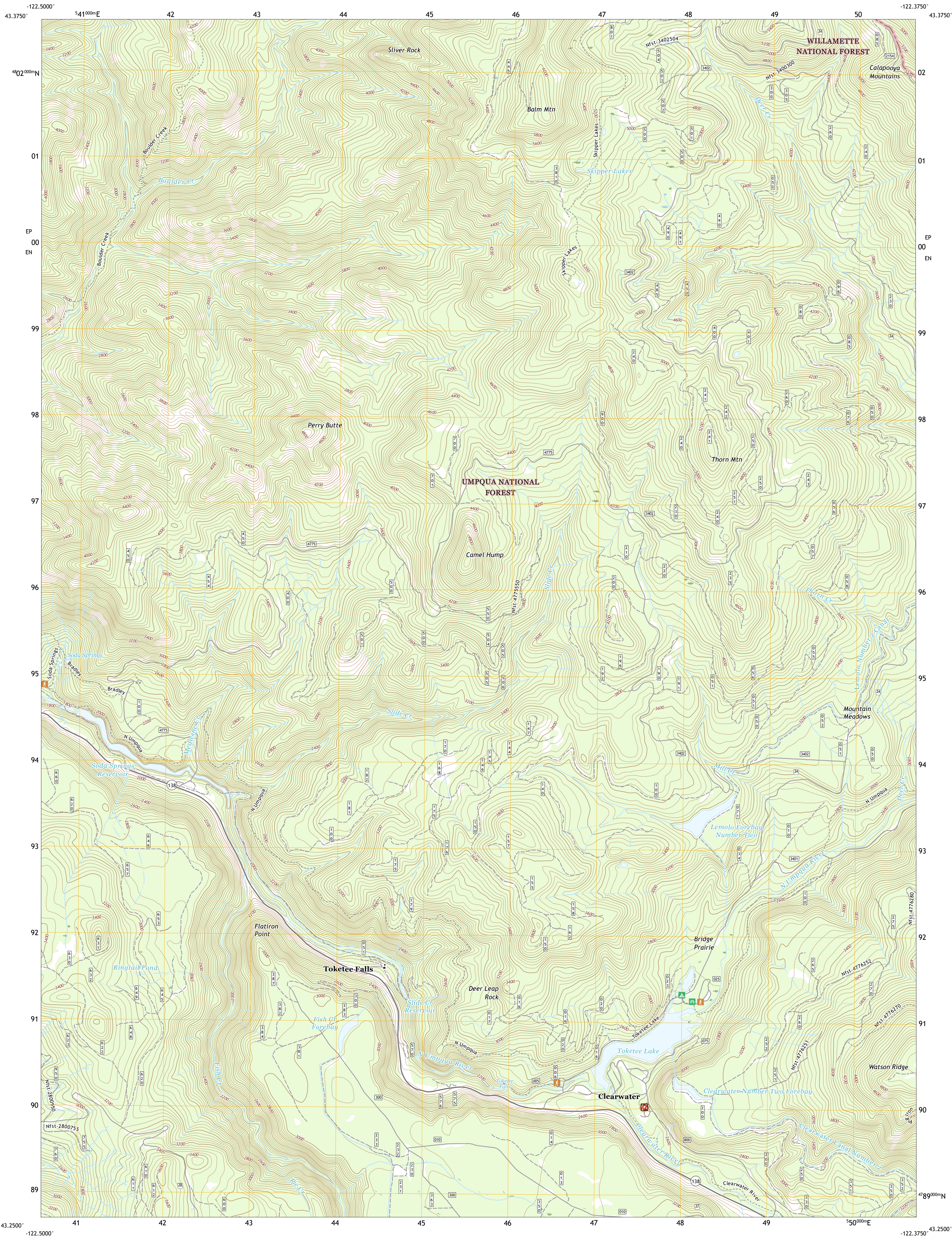




U.S. DEPARTMENT OF THE INTERIOR
U.S. GEOLOGICAL SURVEY

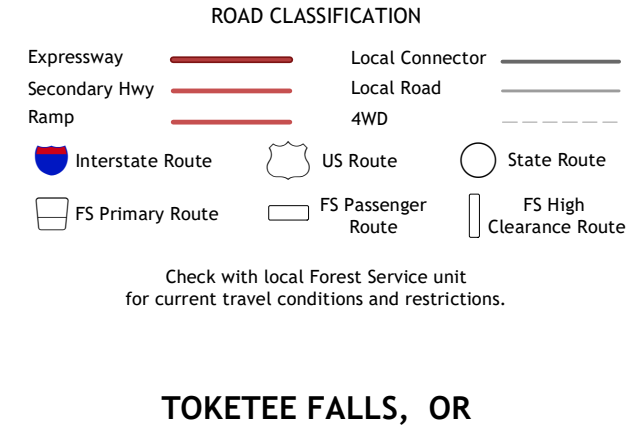
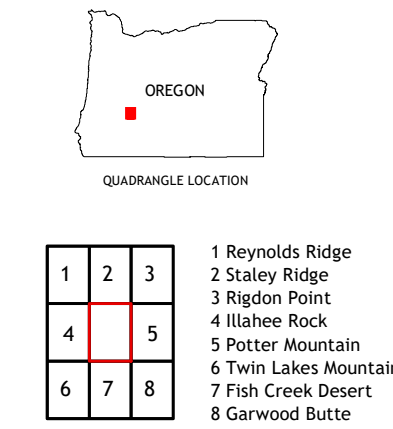
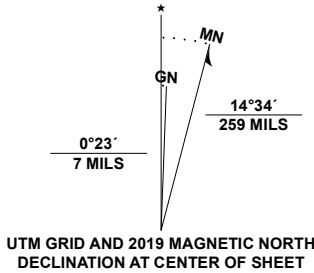


TOKETEE FALLS QUADRANGLE
OREGON - DOUGLAS COUNTY
7.5-MINUTE SERIES



Produced by the United States Geological Survey
North American Datum of 1983 (NAD83)
World Geodetic System of 1984 (WGS84). Projection and
1 000-meter grid/Universal Transverse Mercator, Zone 10T
This map is not a legal document. Boundaries may be
generalized for this map scale. Private lands within government
reservations may not be shown. Obtain permission before
entering private lands.

Imagery.....NAIP, June 2016 - September 2016
Roads.....U.S. Census Bureau, Not Available
Roads within US Forest Service Lands.....FSTopo Data
with limited Forest Service updates, 2014
Names.....GNIS, 1980 - 2019
Hydrography.....National Hydrography Dataset, 2004 - 2020
Contours.....National Elevation Dataset, 1999
Boundaries.....Multiple sources; see metadata file
Public Land Survey System.....BLM, 2019
Wetlands.....FWS National Wetlands Inventory, 1982



TOKETEE FALLS, OR
2020

