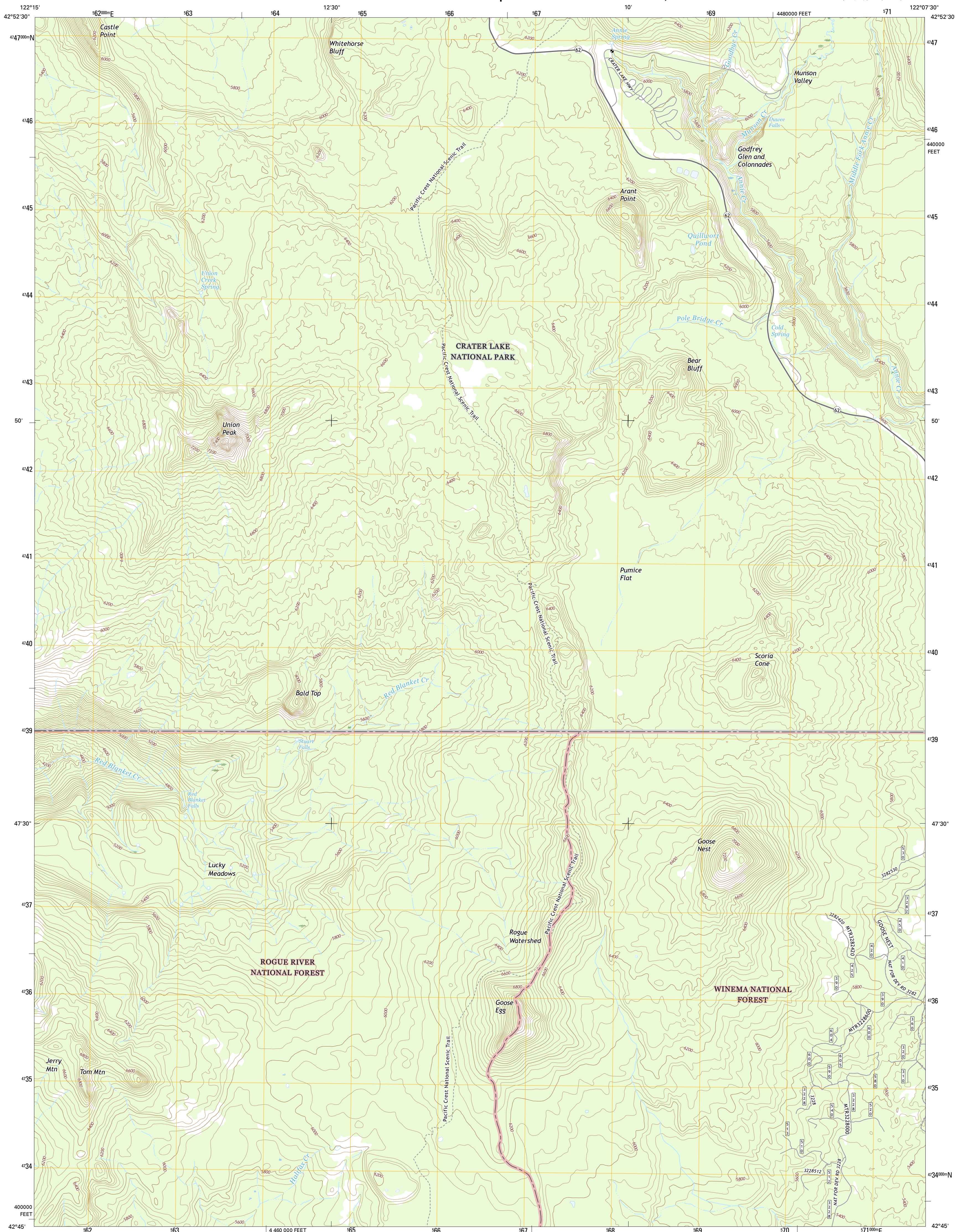




U.S. DEPARTMENT OF THE INTERIOR
U.S. GEOLOGICAL SURVEY



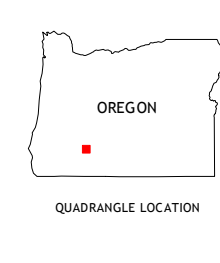
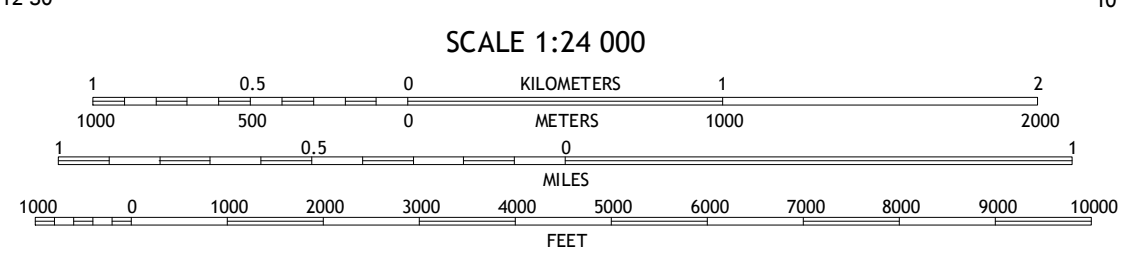
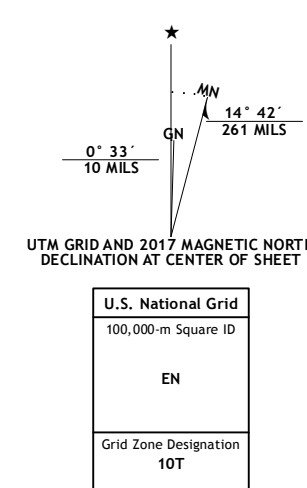
UNION PEAK QUADRANGLE
OREGON-KLAMATH CO.
7.5-MINUTE SERIES



Produced by the United States Geological Survey
 North American Datum of 1983 (NAD83)
 World Geodetic System of 1984 (WGS84). Projection and
 1000-meter grid: Universal Transverse Mercator, Zone 10T
 10 000-foot ticks: Oregon Coordinate System of 1983 (south zone)

This map is not a legal document. Boundaries may be generalized for this map scale. Private lands within government reservations may not be shown. Obtain permission before entering private lands.

Imagery.....N.A.I.P., November 2014
 Roads.....U.S. Census Bureau, 2015 - 2016
 Roads within US Forest Service Lands.....FS Topo Data with limited Forest Service updates, 2012 - 2016
 Names.....National Hydrography Dataset, 2014
 Contours.....National Elevation Dataset, 2011
 Boundaries.....Multiple sources; see metadata file 1972 - 2016
 Public Land Survey System.....BLM, 2016
 Wetlands.....FWS National Wetlands Inventory 1977 - 2014



ROAD CLASSIFICATION

Expressway	Local Connector
Secondary Hwy	Local Road
Ramp	4WD
Interstate Route	US Route
FS Primary Route	FS Passenger Route
	FS High Clearance Route

Check with local Forest Service unit for current travel conditions and restrictions.

1	2	3
4	5	6
7	8	

ADJOINING QUADRANGLES

- 1 Thousand Springs
- 2 Crater Lake West
- 3 Crater Lake East
- 4 Red Blanner Mountain
- 5 Maklaks Crater
- 6 Imnaha Creek
- 7 Devils Peak
- 8 Mares Egg Spring

UNION PEAK, OR
 2017

