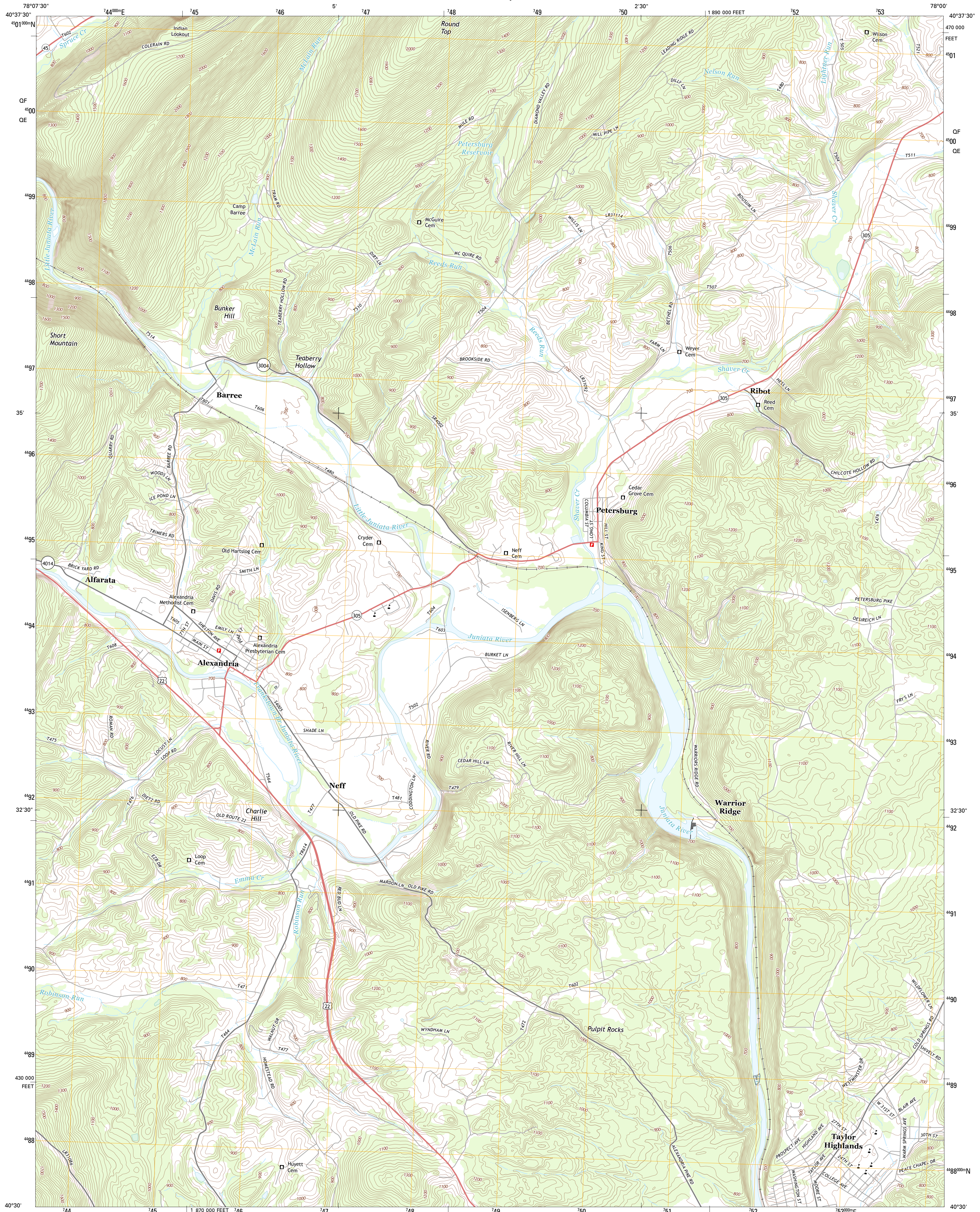




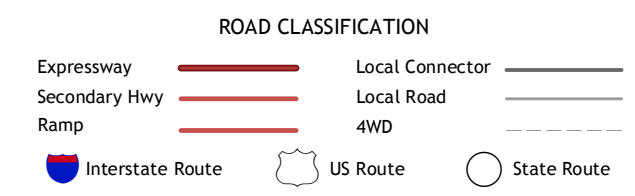
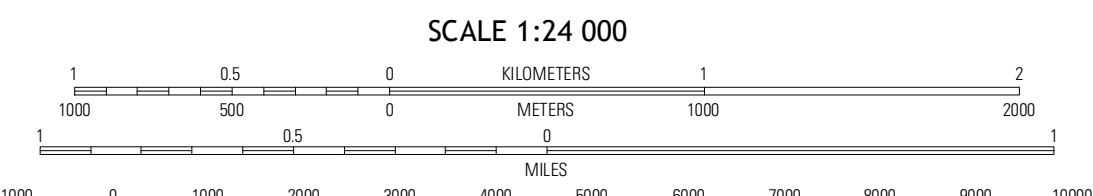
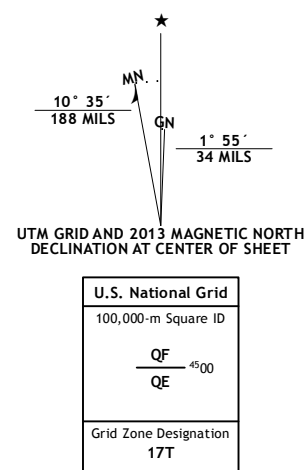
U.S. DEPARTMENT OF THE INTERIOR  
U. S. GEOLOGICAL SURVEY



ALEXANDRIA QUADRANGLE  
PENNSYLVANIA-HUNTINGDON CO.  
7.5-MINUTE SERIES



Produced by the United States Geological Survey  
North American Datum of 1983 (NAD83)  
World Geodetic System of 1984 (WGS84), Projection and  
1 000-meter grid: Universal Transverse Mercator, Zone 17T  
10 000-foot ticks: Pennsylvania Coordinate System of 1983  
(south zone)



Imagery.....NAIP, July 2010  
Roads.....©2006-2012 TomTom  
Names.....GNIS, 2013  
Hydrography.....National Hydrography Dataset, 2010  
Contours.....National Elevation Dataset, 2010  
Boundaries.....Census, IBWC, USGS, 1972-2012

CONTOUR INTERVAL 20 FEET  
NORTH AMERICAN VERTICAL DATUM OF 1988  
This map was produced to conform with the  
National Geospatial Program US Topo Product Standard, 2011.  
A metadata file associated with this product is draft version 0.6.11

QUADRANGLE LOCATION

|              |               |                  |
|--------------|---------------|------------------|
| Tyone        | Franklinville | Pine Grove Mills |
| Spruce Creek | Alexandria    | Donation         |
| Williamsburg | Huntingdon    | Mount Union      |

ALEXANDRIA, PA  
2013

ADJOINING 7.5 QUADRANGLES