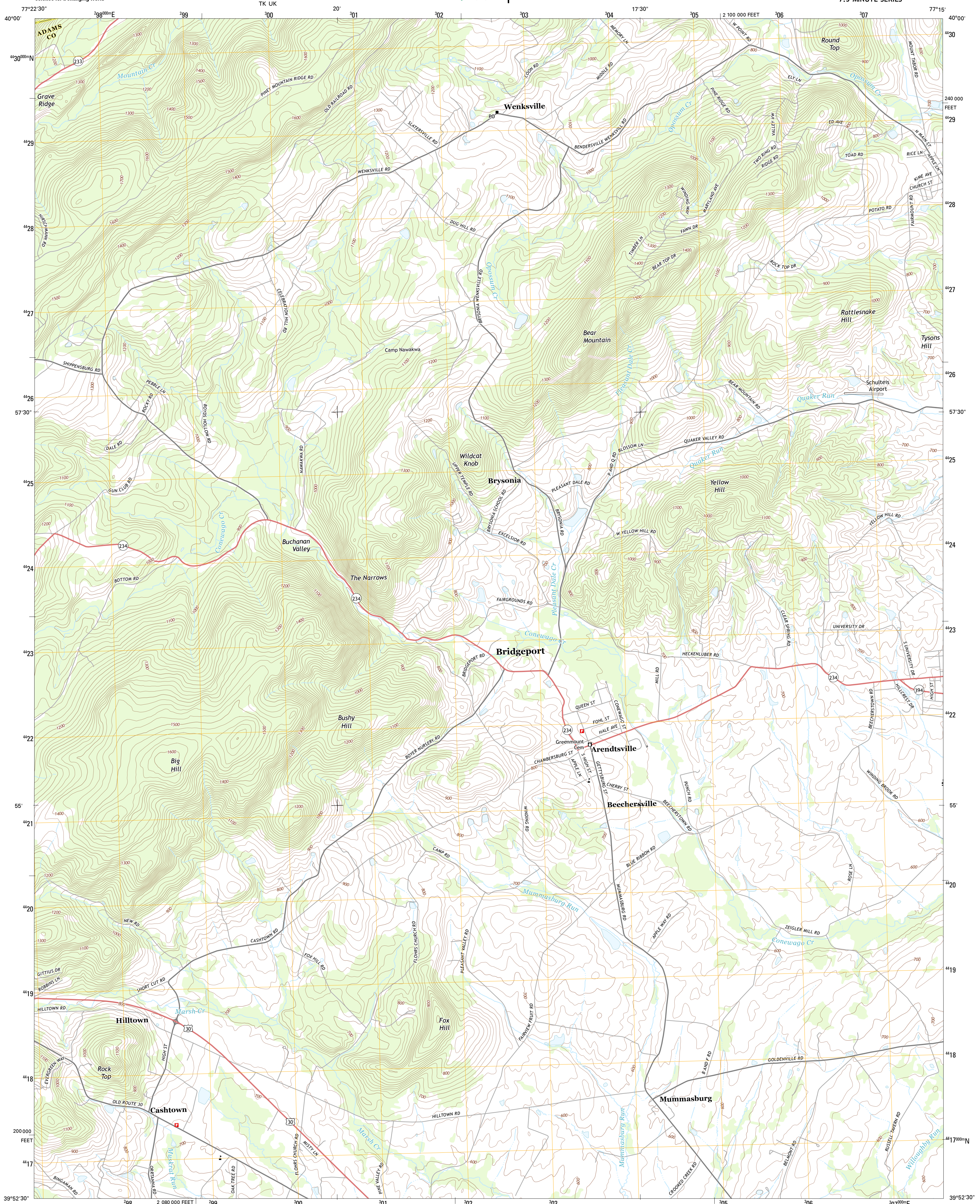




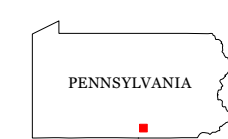
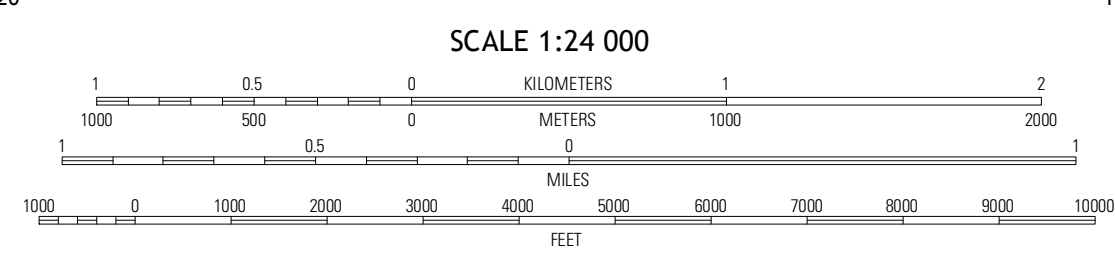
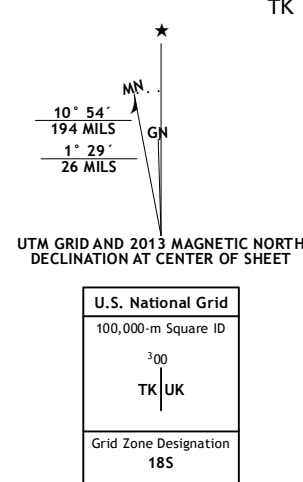
U.S. DEPARTMENT OF THE INTERIOR  
U. S. GEOLOGICAL SURVEY



ARENDSVILLE QUADRANGLE  
PENNSYLVANIA  
7.5-MINUTE SERIES

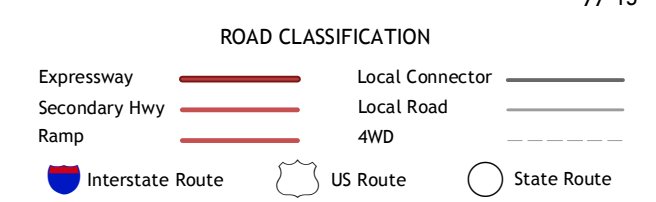


Produced by the United States Geological Survey  
North American Datum of 1983 (NAD83)  
World Geodetic System of 1984 (WGS84). Projection and  
1100-meter grid: Universal Transverse Mercator, Zone 18S  
10 000-foot ticks: Pennsylvania Coordinate System of 1983  
(south zone)



QUADRANGLE LOCATION

Walnut Bottom	Dickinson	Mount Holy Springs
Caladonia Park	Arendtsville	Biglerville
Iron Springs	Plainfield	Gettysburg



Imagery.....NAIP, July 2010  
Roads.....©2006-2012 TomTom  
Names.....GNS, 2013  
Hydrography.....National Hydrography Dataset, 2010  
Contours.....National Elevation Dataset, 2000  
Boundaries.....Census, IBWC, IBC, USGS, 1972 - 2012

CONTOUR INTERVAL 20 FEET  
NORTH AMERICAN VERTICAL DATUM OF 1988

This map was produced to conform with the  
National Geospatial Program US Topo Product Standard, 2011.  
A metadata file associated with this product is draft version 0.6.11

ARENDSVILLE, PA  
2013

ADJOINING 7.5 QUADRANGLES