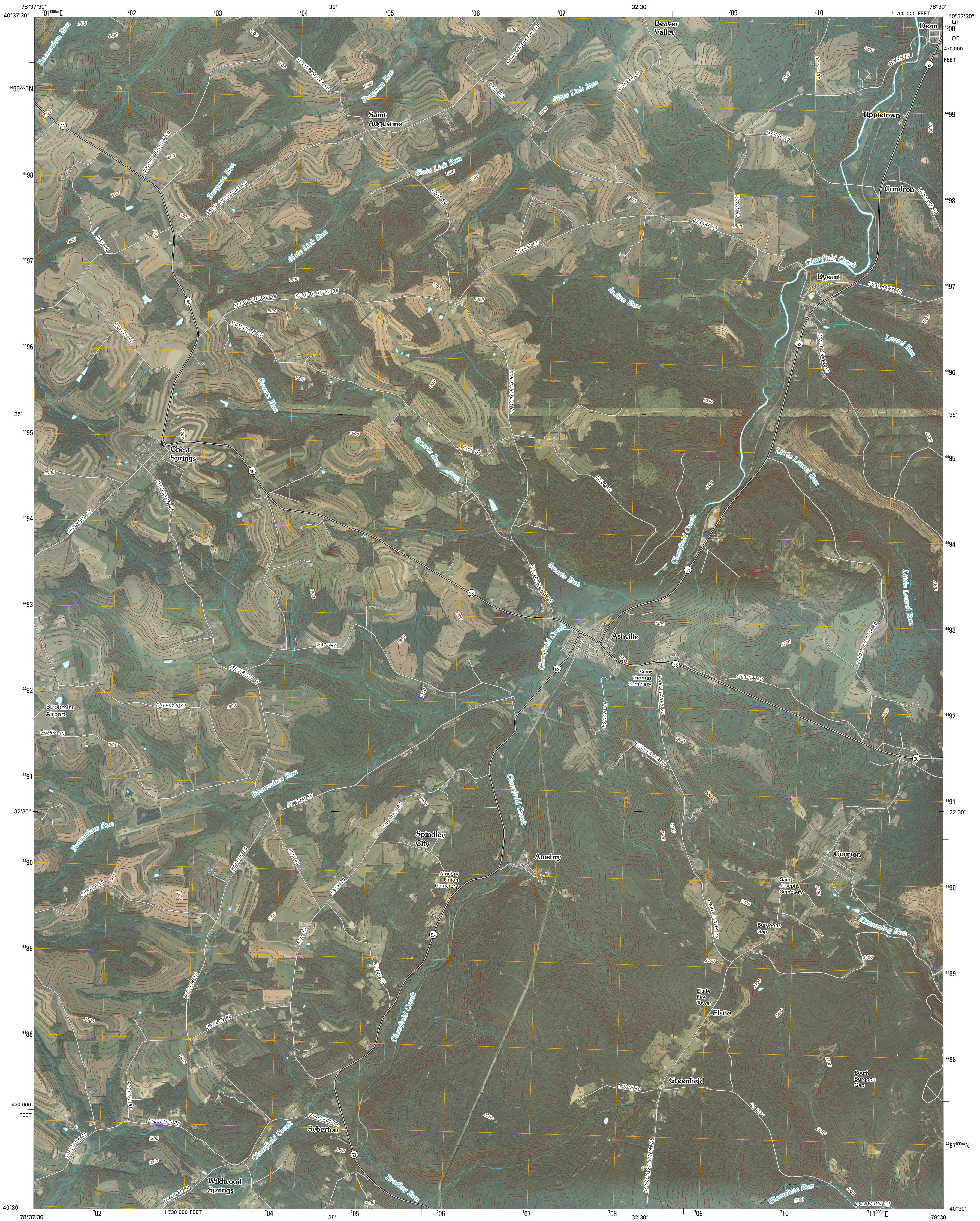




U.S. DEPARTMENT OF THE INTERIOR
U. S. GEOLOGICAL SURVEY

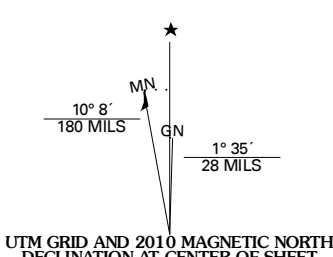


ASHVILLE QUADRANGLE
PENNSYLVANIA
7.5-MINUTE SERIES

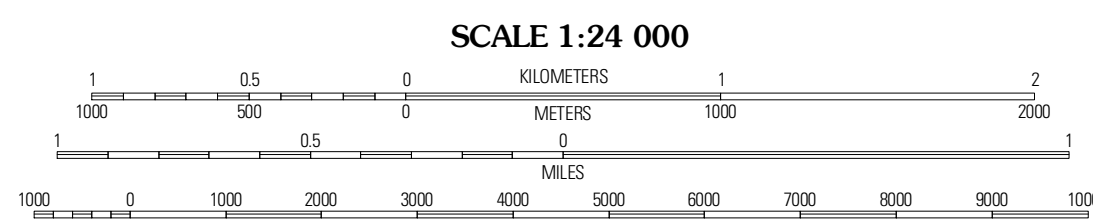


Produced by the United States Geological Survey
North American Datum of 1983 (NAD83)
World Geodetic System of 1984 (WGS84). Projection and
1 000-meter grid; Universal Transverse Mercator, Zone 17T
10 000-foot ticks; Pennsylvania Coordinate System of 1983
(south zone)

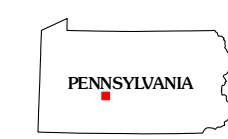
Imagery: NAIP, August 2008
Roads: ©2006-2010 Tele Atlas
Names: ©2006-2010 Tele Atlas
Hydrography: National Hydrography Dataset, 2008
Contours: National Elevation Dataset, 2000



U.S. National Grid	100,000 Square Meters
OF	± 30
GE	± 30
Grid Zone Designation	17T



CONTOUR INTERVAL 20 FEET
NORTH AMERICAN VERTICAL DATUM OF 1988
This map was produced to conform with version 0.5.10 of the
draft USGS Standards for 7.5-Minute Quadrangle Maps.
A metadata file associated with this product is draft version 0.5.11



QUADRANGLE LOCATION

Hastings	Coalport	Blandburg
Carrolltown	Ashville	Altoona
Ebensburg	Cresson	Hollydayburg

ADJOINING 7.5' QUADRANGLES

ROAD CLASSIFICATION

Interstate Route	State Route
US Route	Local Road
Ramp	4WD

Legend symbols for Interstate Route, US Route, Ramp, State Route, and 4WD.

ASHVILLE, PA
2010