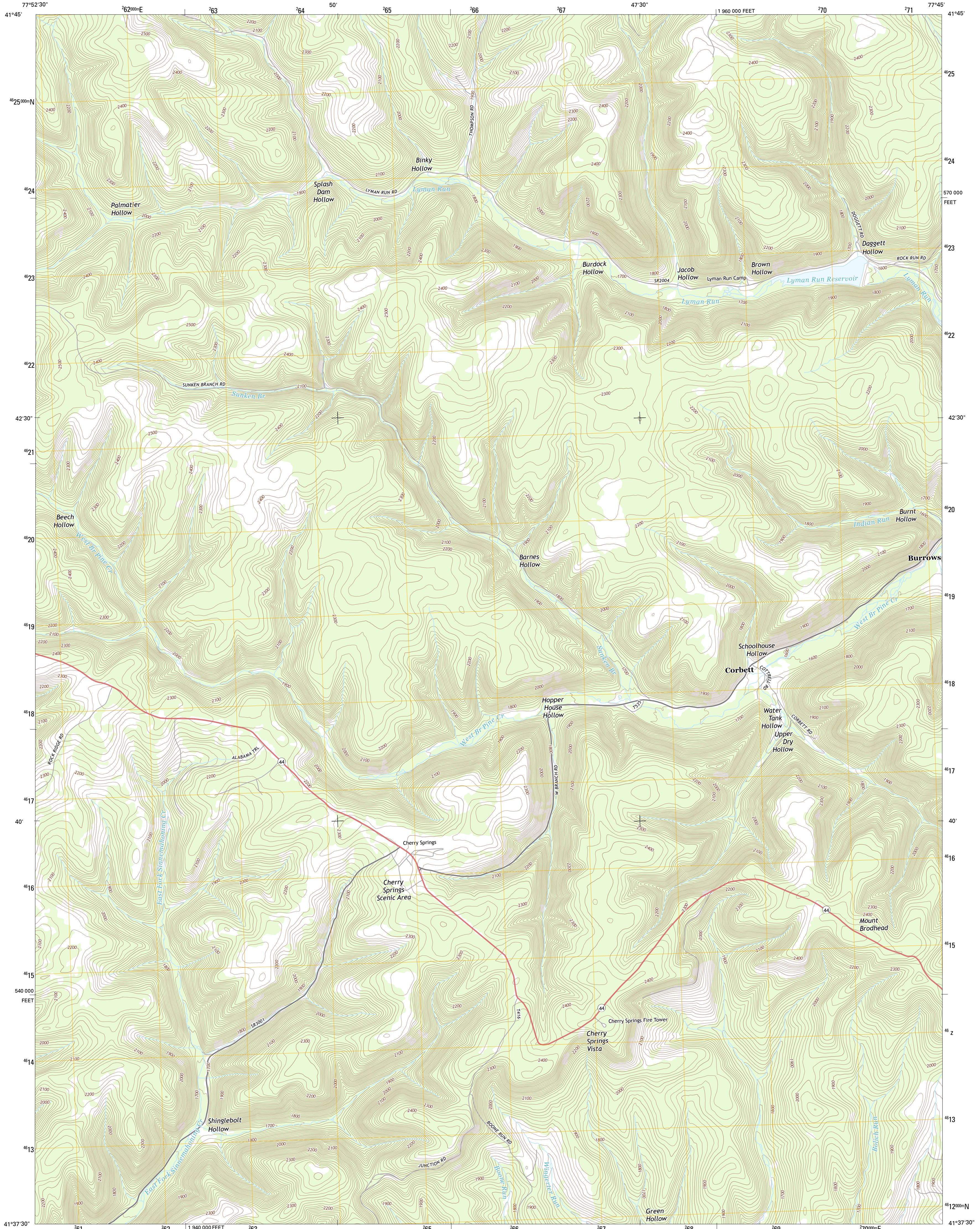




U.S. DEPARTMENT OF THE INTERIOR
U. S. GEOLOGICAL SURVEY

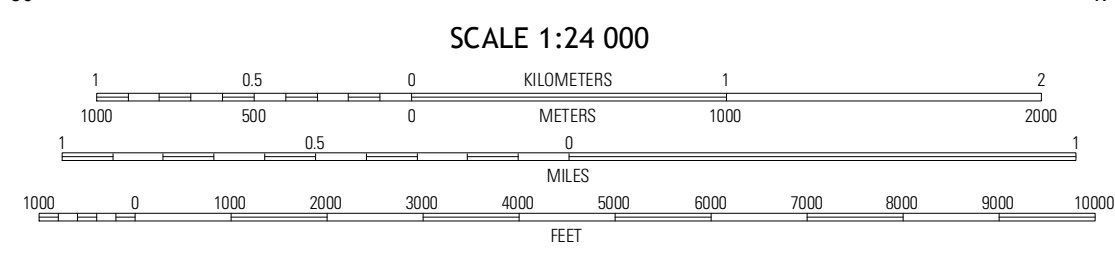
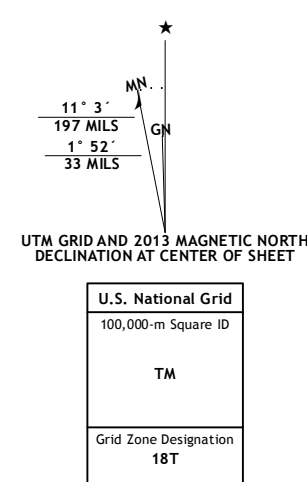


CHERRY SPRINGS QUADRANGLE
PENNSYLVANIA-POTTER CO.
7.5-MINUTE SERIES



Produced by the United States Geological Survey
North American Datum of 1983 (NAD83)
World Geodetic System of 1984 (WGS84), Projection and
1 000-meter grid: Universal Transverse Mercator, Zone 18T
(10 000-foot ticks: Pennsylvania Coordinate System of 1983
(north zone))

Imagery.....NAIP, June 2010
Roads.....©2006-2012 TomTom
Names.....©2013 GNS
Hydrography.....National Hydrography Dataset, 2010
Contours.....National Elevation Dataset, 2010
Boundaries.....Census, IBWC, IBC, USGS, 1972 - 2012

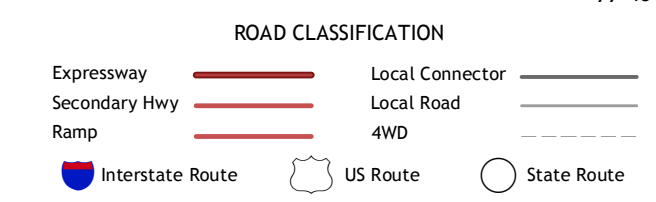


CONTOUR INTERVAL 20 FEET
NORTH AMERICAN VERTICAL DATUM OF 1988
This map was produced to conform with the
National Geospatial Program US Topo Product Standard, 2011.
A metadata file associated with this product is draft version 0.6.11



QUADRANGLE LOCATION

Sweden Valley	Brookland	West Pike
Ayers Hill	Cherry Springs	Gaileton
Conrad	Short Run	Okeona



CHERRY SPRINGS, PA
2013

ADJOINING 7.5 QUADRANGLES