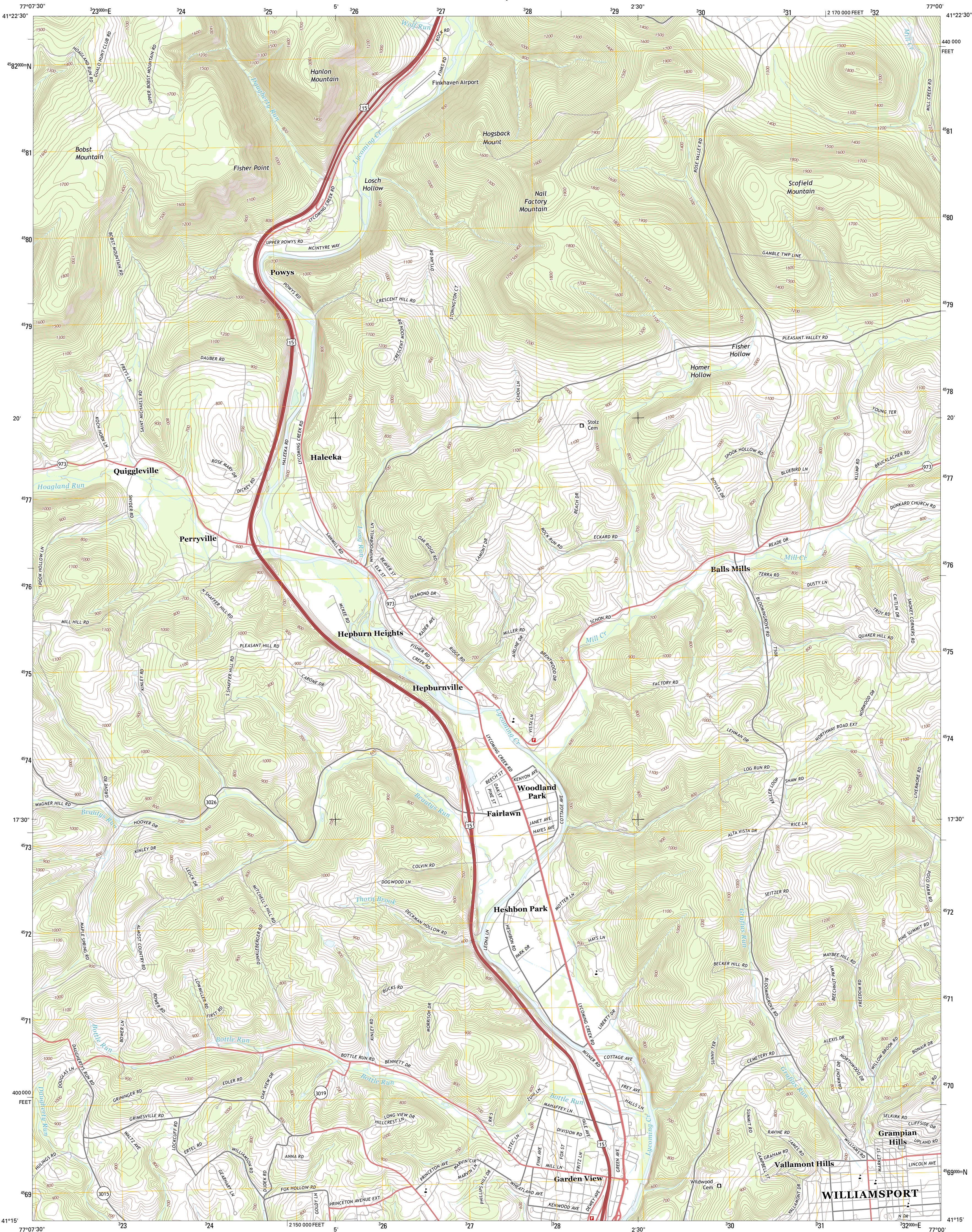




U.S. DEPARTMENT OF THE INTERIOR  
U. S. GEOLOGICAL SURVEY

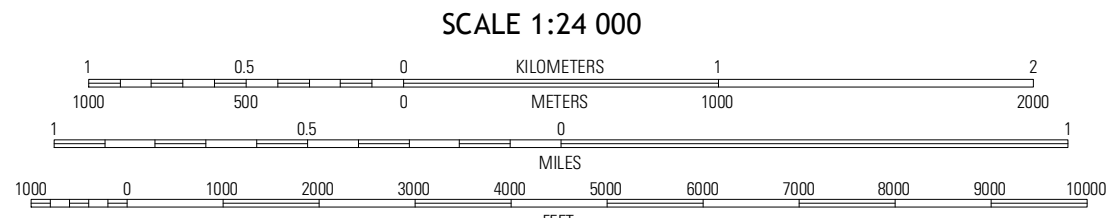
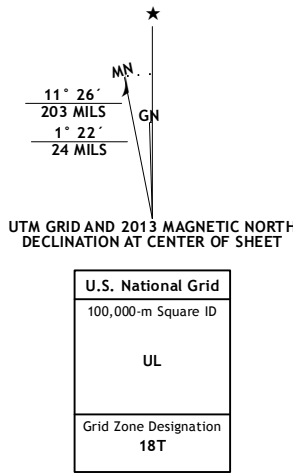


COGAN STATION QUADRANGLE  
PENNSYLVANIA-LYCOMING CO.  
7.5-MINUTE SERIES



Produced by the United States Geological Survey  
North American Datum of 1983 (NAD83)  
World Geodetic System of 1984 (WGS84). Projection and  
1 000-meter grid: Universal Transverse Mercator, Zone 18T  
10 000-foot ticks: Pennsylvania Coordinate System of 1983  
(north zone)

Imagery.....NAIP, July 2010 - September 2010  
Roads.....©2006-2012, TomTom  
Names.....GNIS, 2013  
Hydrography.....National Hydrography Dataset, 2010  
Contours.....National Elevation Dataset, 2010  
Boundaries.....Census, IBWC, IBC, USGS, 1972 - 2012



CONTOUR INTERVAL 20 FEET  
NORTH AMERICAN VERTICAL DATUM OF 1988  
This map was produced to conform with the  
National Geospatial Program US Topo Product Standard, 2011.  
A metadata file associated with this product is draft version 0.6.11



QUADRANGLE LOCATION		
White Pine	Trout Run	Bodines
Saladinasburg	Cogan Station	Montoursville North
Linden	Williamsport	Montoursville South

ROAD CLASSIFICATION		
Expressway	Local Connector	
Secondary Hwy	Local Road	
Ramp	4WD	
Interstate Route	US Route	State Route

COGAN STATION, PA  
2013

ADJOINING 7.5' QUADRANGLES