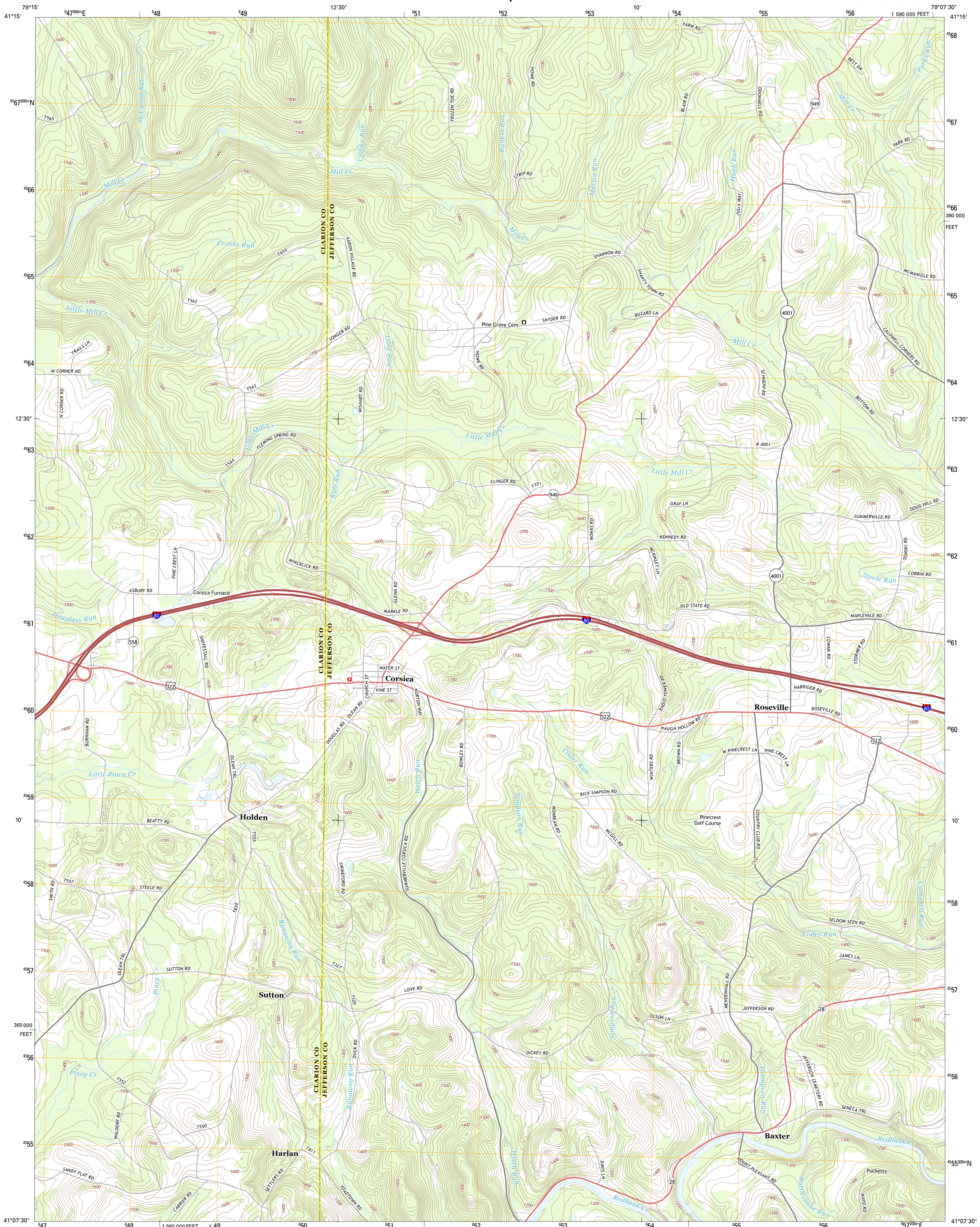




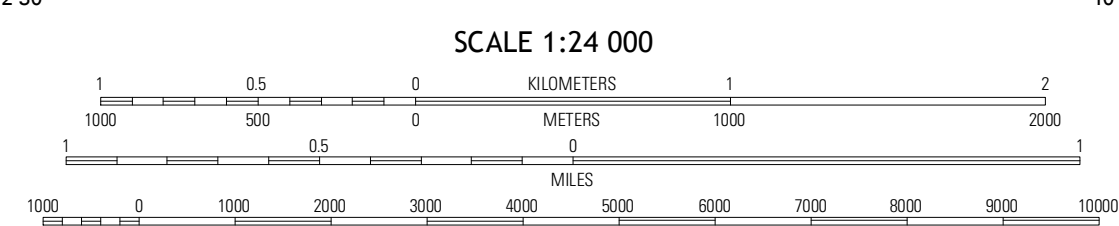
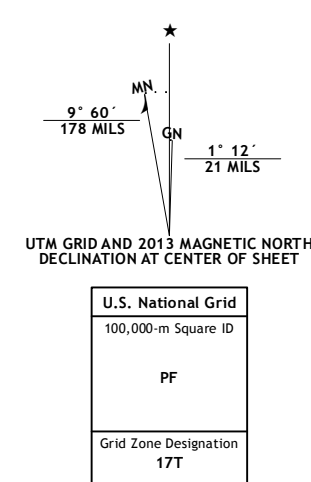
U.S. DEPARTMENT OF THE INTERIOR  
U. S. GEOLOGICAL SURVEY



CORSICA QUADRANGLE  
PENNSYLVANIA  
7.5-MINUTE SERIES



Produced by the United States Geological Survey  
North American Datum of 1983 (NAD83)  
World Geodetic System of 1984 (WGS84). Projection and  
1:1000 meter grid: Universal Transverse Mercator, Zone 17T  
10 000-foot ticks: Pennsylvania Coordinate System of 1983  
(north zone)



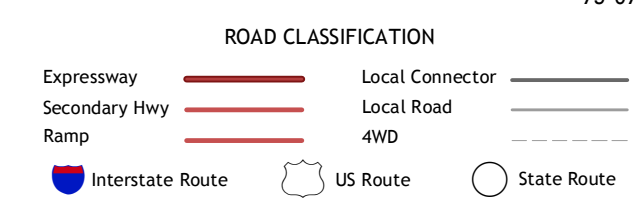
CONTOUR INTERVAL 20 FEET  
NORTH AMERICAN VERTICAL DATUM OF 1988  
This map was produced to conform with the  
National Geospatial Program US Topo Product Standard, 2011.  
A metadata file associated with this product is draft version 0.6.11



QUADRANGLE LOCATION

Lucinda	Cooksburg	Sigt
Strattanville	Corsica	Brookville
New Bethlehem	Summersville	Coolspring

ADJOINING 7.5 QUADRANGLES



CORSICA, PA  
2013