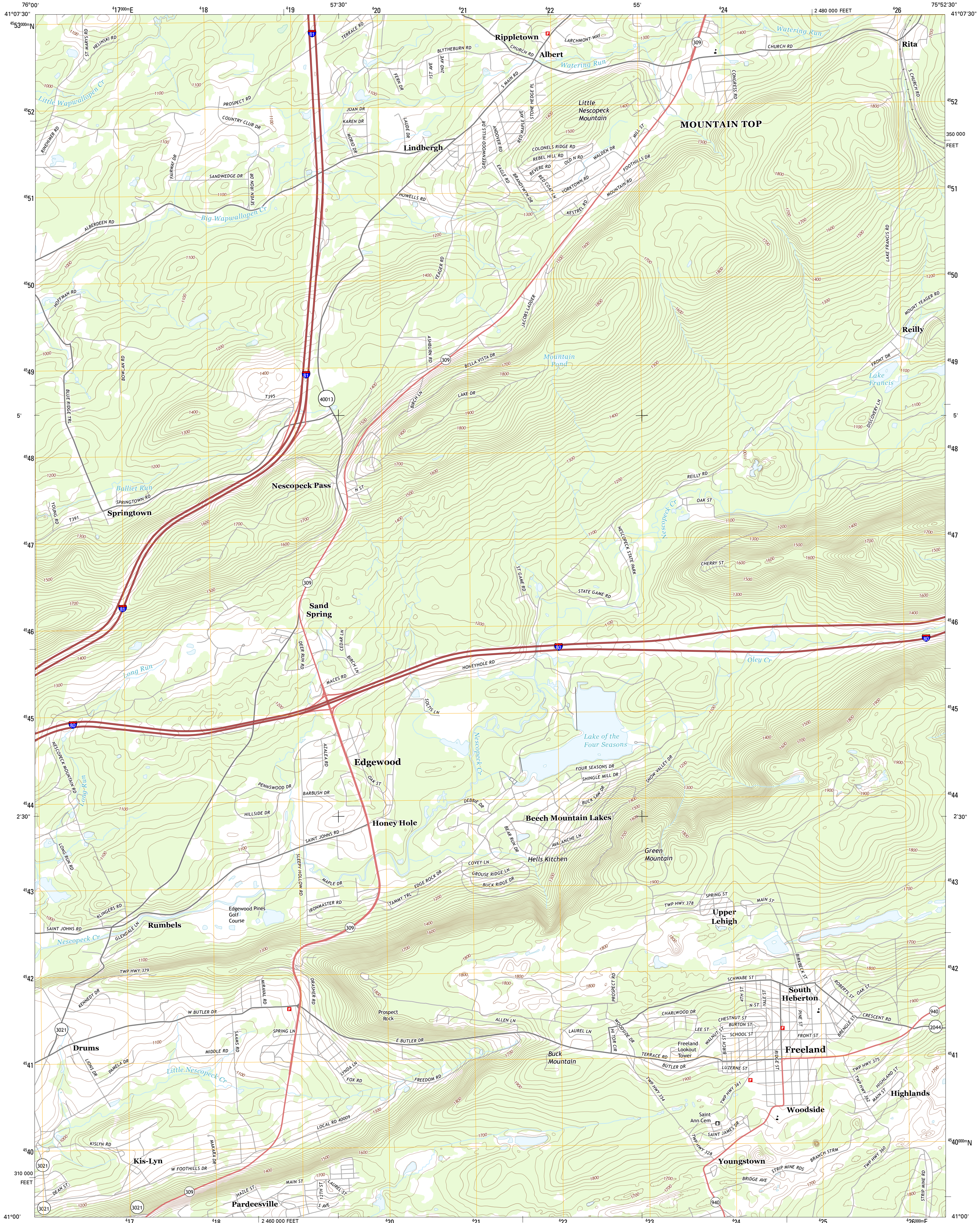




U.S. DEPARTMENT OF THE INTERIOR  
U. S. GEOLOGICAL SURVEY

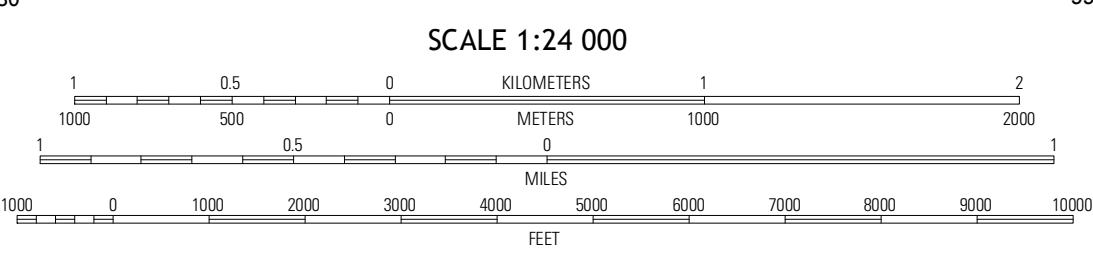
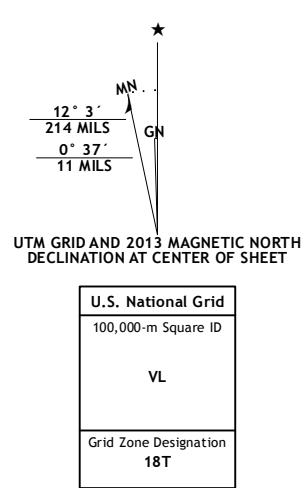


FREELAND QUADRANGLE  
PENNSYLVANIA-LUZERNE CO.  
7.5-MINUTE SERIES



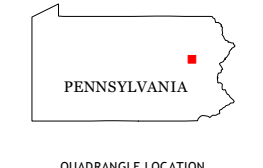
Produced by the United States Geological Survey  
North American Datum of 1983 (NAD83)  
World Geodetic System of 1984 (WGS84). Projection and  
1 000-meter grid: Universal Transverse Mercator, Zone 18T  
10 000-foot ticks: Pennsylvania Coordinate System of 1983  
(north zone)

Imagery.....NAIP, July 2010  
Roads.....©2006-2012, TomTom  
Names.....GNIS, 2013  
Hydrography.....National Hydrography Dataset, 2010  
Contours.....National Elevation Dataset, 2010  
Boundaries.....Census, IBWC, IBC, USGS, 1972 - 2012



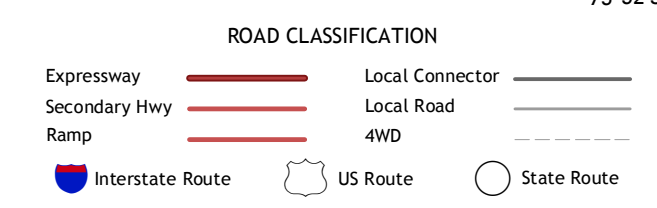
CONTOUR INTERVAL 20 FEET  
NORTH AMERICAN VERTICAL DATUM OF 1988

This map was produced to conform with the  
National Geospatial Program US Topo Product Standard, 2011.  
A metadata file associated with this product is draft version 0.6.11



QUADRANGLE LOCATION

Nanticoke	Wilkes-Barre West	Wilkes-Barre East
Sylabester	Freeland	White Haven
Conyngham	Hazleton	Weatherly



FREELAND, PA  
2013