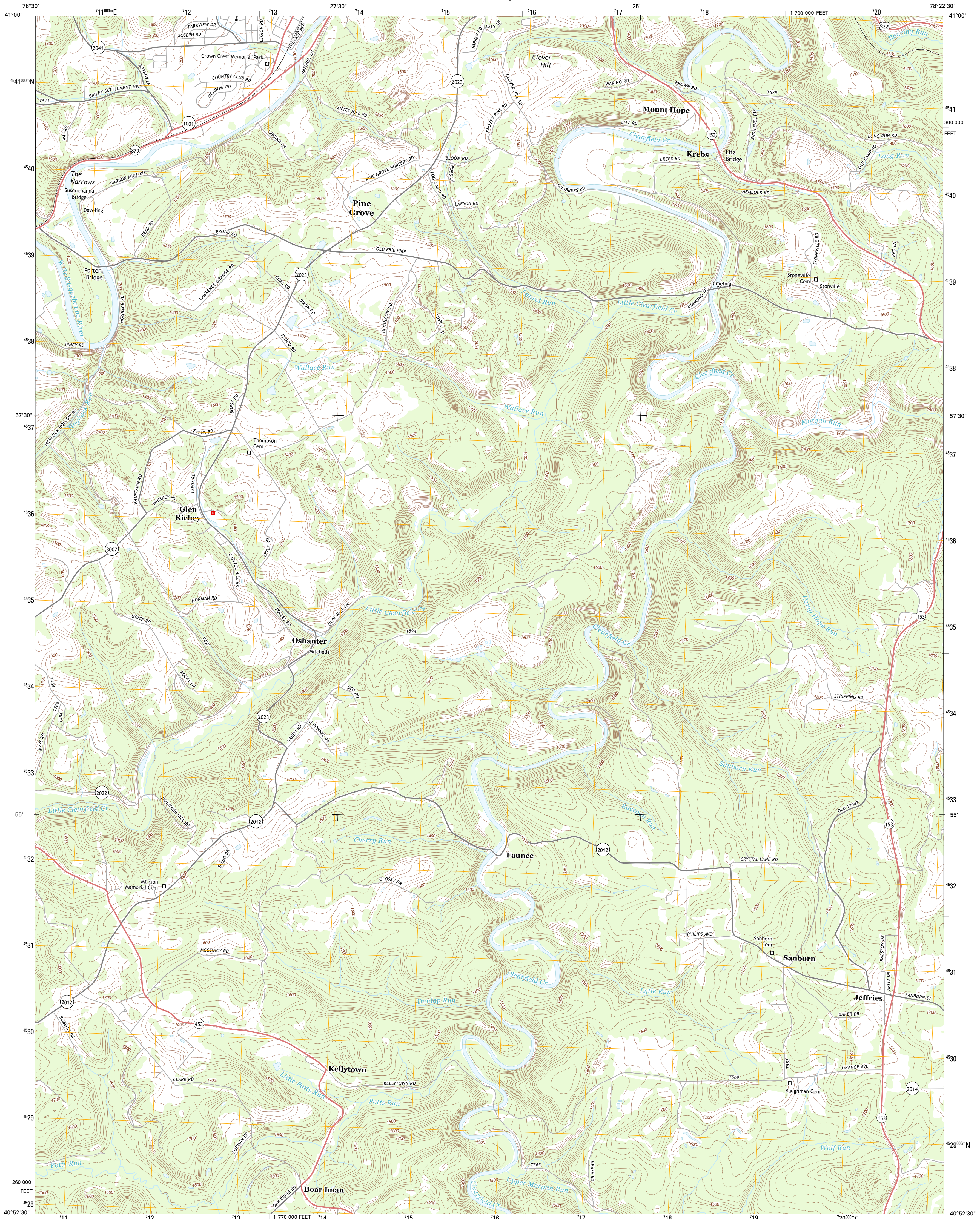




U.S. DEPARTMENT OF THE INTERIOR
U. S. GEOLOGICAL SURVEY

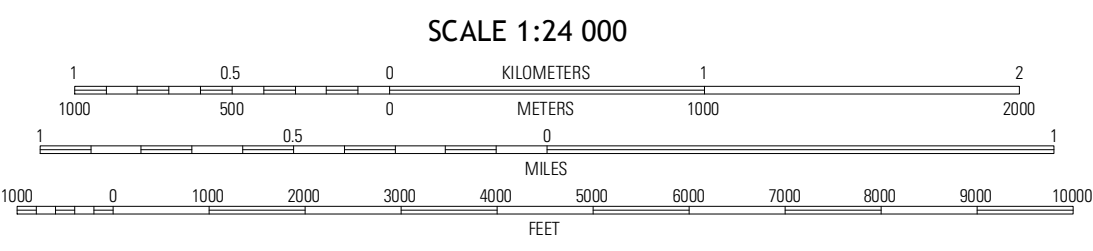
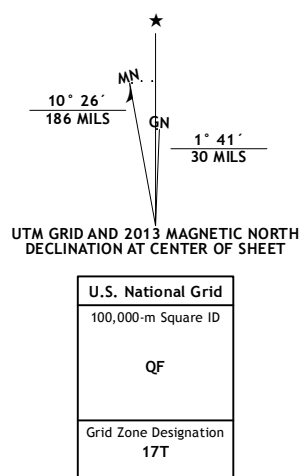


GLEN RICHEY QUADRANGLE
PENNSYLVANIA-CLEARFIELD CO.
7.5-MINUTE SERIES

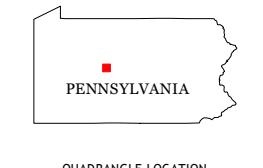


Produced by the United States Geological Survey
North American Datum of 1983 (NAD83)
World Geodetic System of 1984 (WGS84). Projection and
1:000-meter grid: Universal Transverse Mercator, Zone 17T
10 000-foot ticks: Pennsylvania Coordinate System of 1983
(north zone)

Imagery.....NAIP, June 2010 - September 2010
Roads.....©2006-2012 TomTom
Names.....GNIS, 2013
Hydrography.....National Hydrography Dataset, 2010
Contours.....National Elevation Dataset, 2010
Boundaries.....Census, IBWC, IBC, USGS, 1972 - 2012

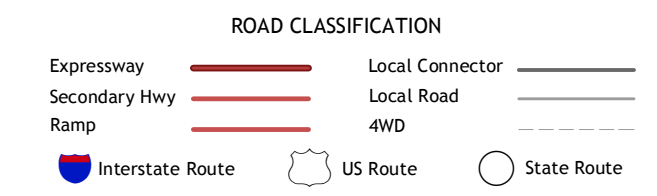


CONTOUR INTERVAL 20 FEET
NORTH AMERICAN VERTICAL DATUM OF 1988
This map was produced to conform with the
National Geospatial Program US Topo Product Standard, 2011.
A metadata file associated with this product is draft version 0.6.11



QUADRANGLE LOCATION

Elliott Park	Clearfield	Leontes Mills
Charvenaville	Glen Richey	Wallacetown
Ironoa	Raney	Houtzdale



GLEN RICHEY, PA
2013

ADJOINING 7.5 QUADRANGLES