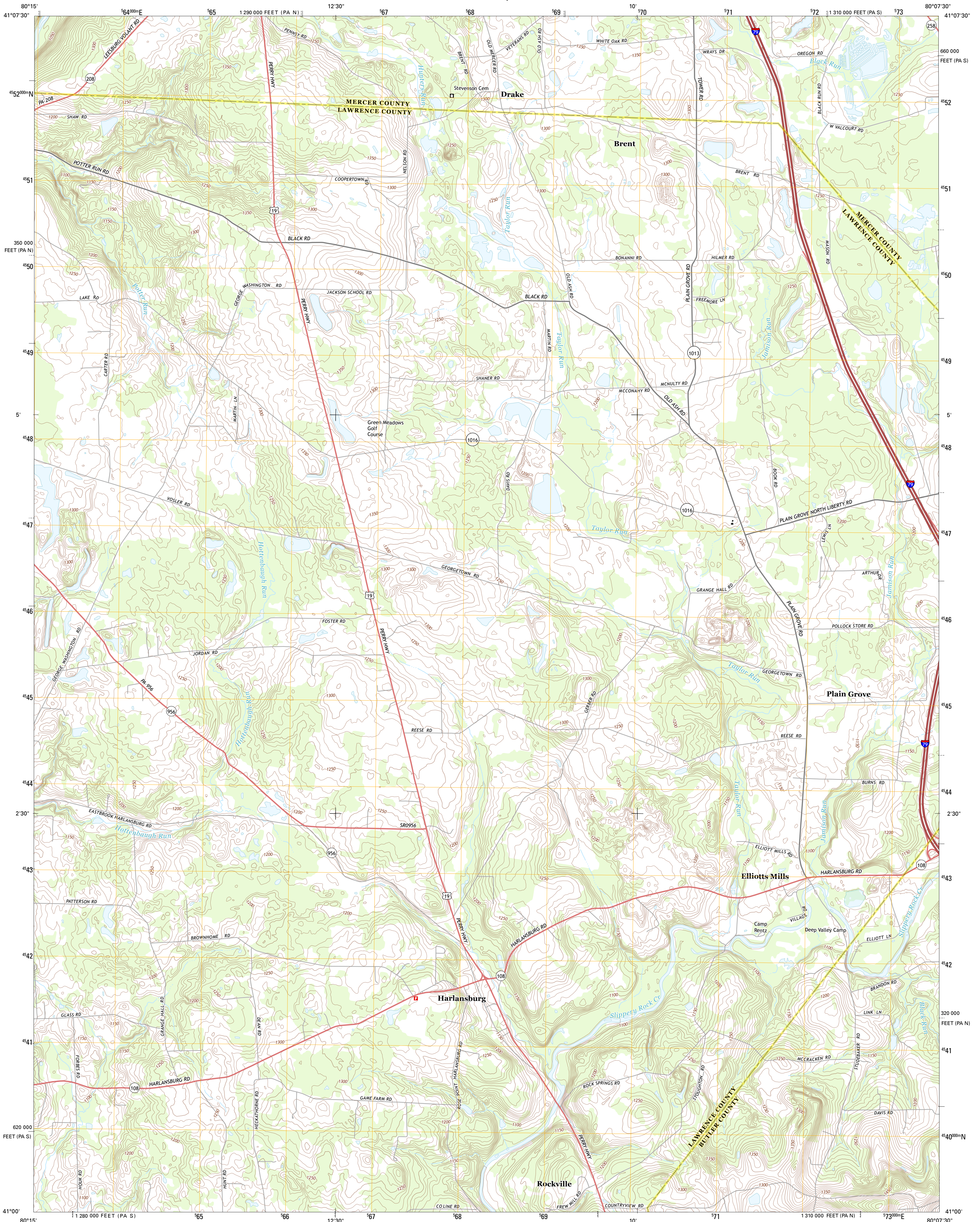




U.S. DEPARTMENT OF THE INTERIOR
U. S. GEOLOGICAL SURVEY

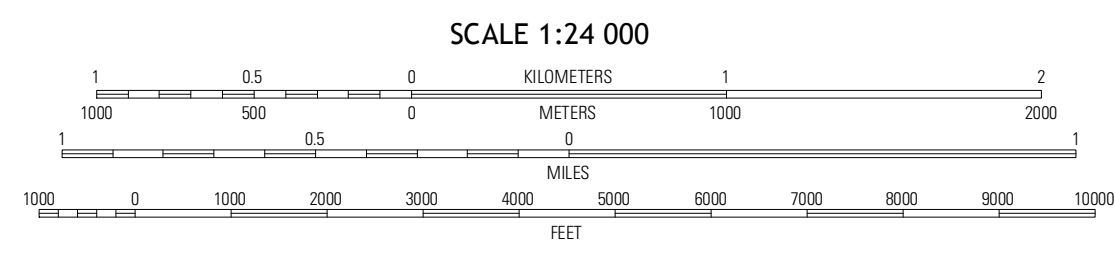
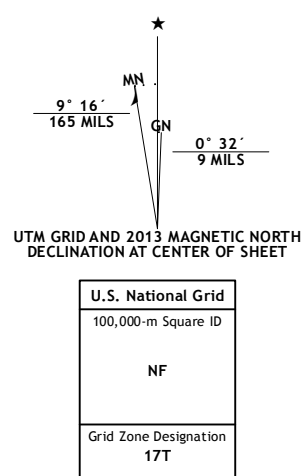


HARLANSBURG QUADRANGLE
PENNSYLVANIA
7.5-MINUTE SERIES

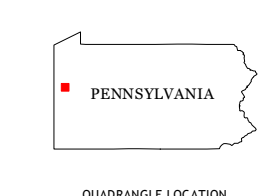


Produced by the United States Geological Survey
North American Datum of 1983 (NAD83)
World Geodetic System of 1984 (WGS84). Projection and
1 000-meter grid: Universal Transverse Mercator, Zone 17T
10 000-foot ticks: Pennsylvania Coordinate System of 1983
(south and north zones)

Imagery.....NAIP, May 2010 - June 2010
Roads.....©2006-2012, TomTom
Names.....©2013, OpenStreetMap contributors, CC-BY, Imagery ©2013
Hydrography.....National Hydrography Dataset, 2010
Contours.....National Elevation Dataset, 2010
Boundaries.....Census, IBWC, IBC, USGS, 1972 - 2012

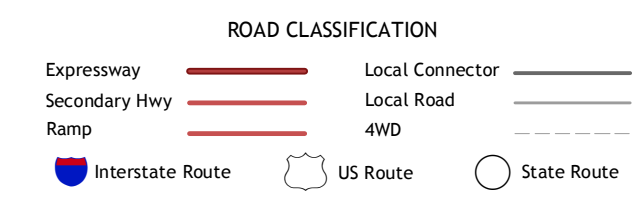


This map was produced to conform with the
National Geospatial Program US Topo Product Standard, 2011.
A metadata file associated with this product is draft version 0.6.11



QUADRANGLE LOCATION

Greenfield	Mercer	Grove City
New Castle North	Harlansburg	Slippery Rock
New Castle South	Portville	Prospect



HARLANSBURG, PA
2013

ADJOINING 7.5 QUADRANGLES