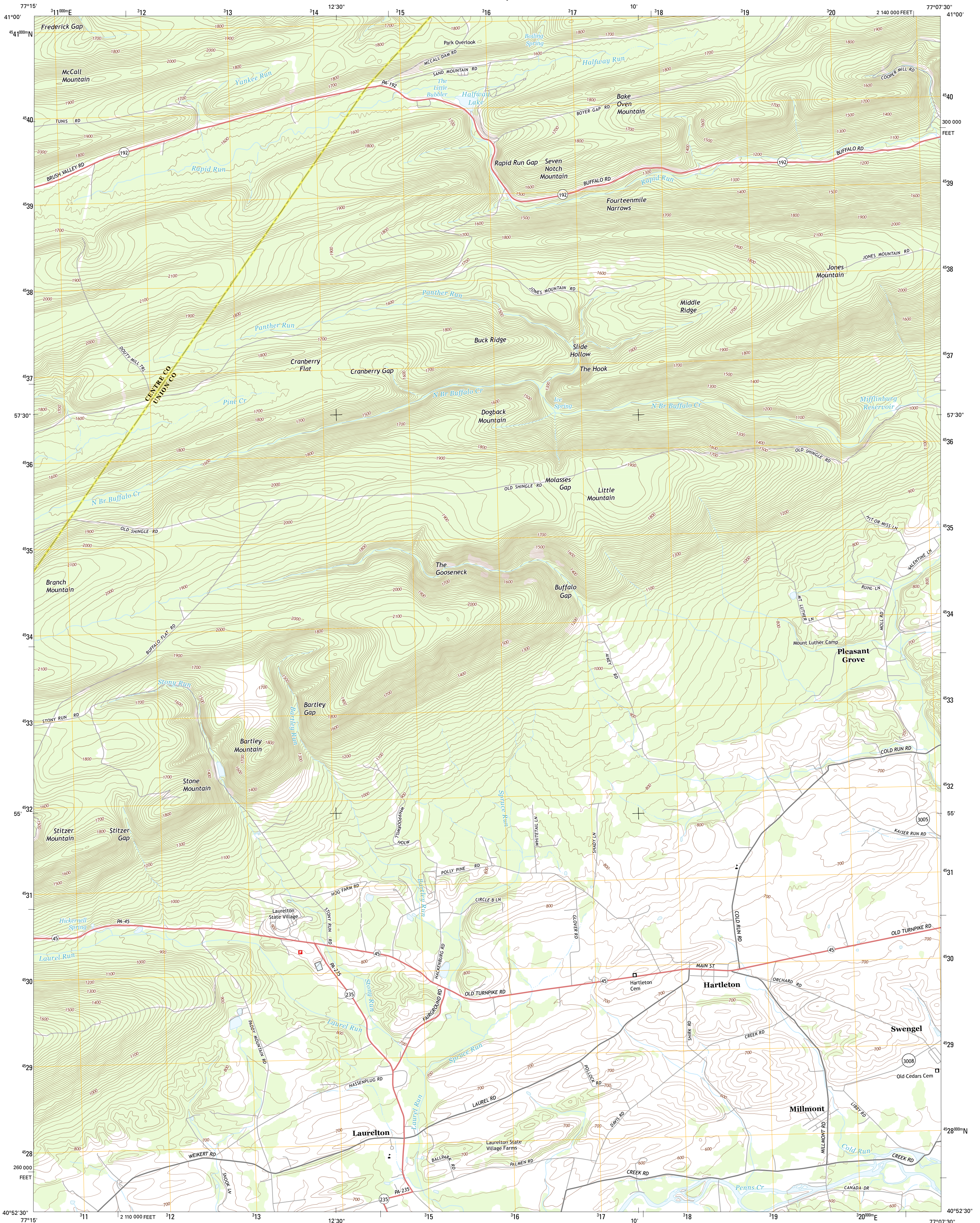




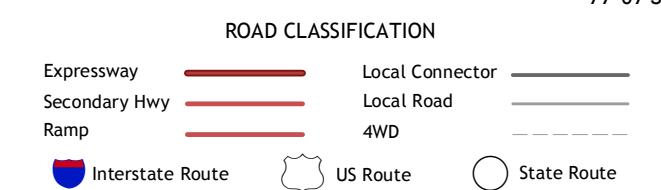
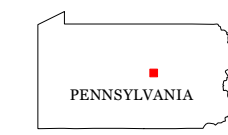
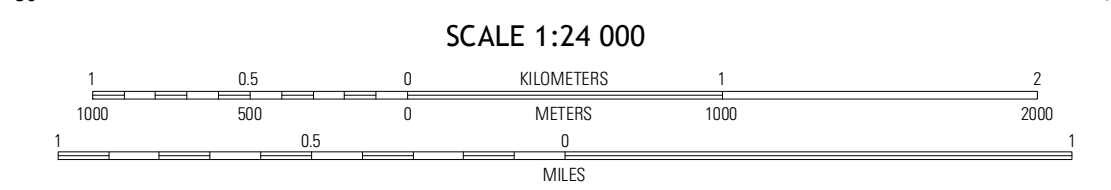
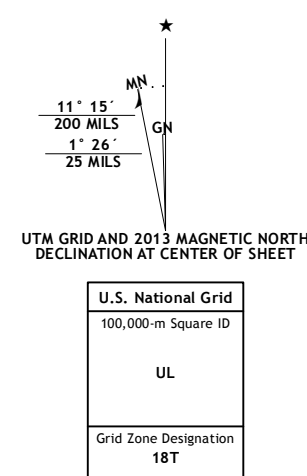
U.S. DEPARTMENT OF THE INTERIOR
U. S. GEOLOGICAL SURVEY



HARTLETON QUADRANGLE
PENNSYLVANIA
7.5-MINUTE SERIES



Produced by the United States Geological Survey
North American Datum of 1983 (NAD83)
World Geodetic System of 1984 (WGS84), Projection and
1 000-meter grid: Universal Transverse Mercator, Zone 18T
10 000-foot ticks: Pennsylvania Coordinate System of 1983
(north zone)



QUADRANGLE LOCATION

Loganton	Carroll	Williamsport SE
Woodward	Hartleton	Millinburg
Weikert	Beavertown	Middleburg

ADJOINING 7.5 QUADRANGLES

Imagery.....NAIP, July 2010
Roads.....©2006-2012 TomTom
Names.....GNS, 2013
Hydrography.....National Hydrography Dataset, 2010
Contours.....National Elevation Dataset, 2010
Boundaries.....Census, IBWC, IBC, USGS, 1972 - 2012

CONTOUR INTERVAL 20 FEET
NORTH AMERICAN VERTICAL DATUM OF 1988
This map was produced to conform with the
National Geospatial Program US Topo Product Standard, 2011.
A metadata file associated with this product is draft version 0.6.11

HARTLETON, PA
2013