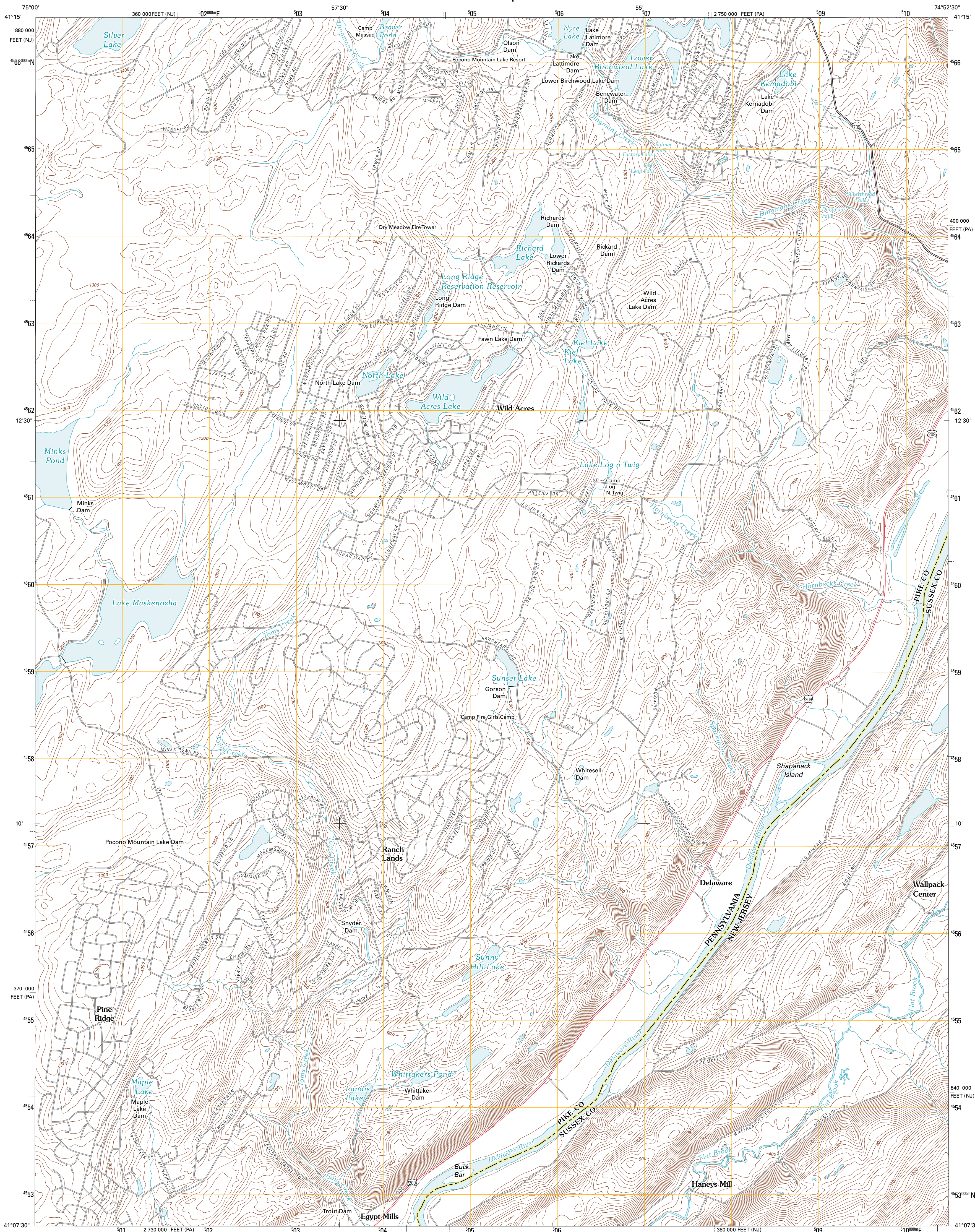




U.S. DEPARTMENT OF THE INTERIOR  
U. S. GEOLOGICAL SURVEY



LAKE MASKENOZHA QUADRANGLE  
PENNSYLVANIA-NEW JERSEY  
7.5-MINUTE SERIES

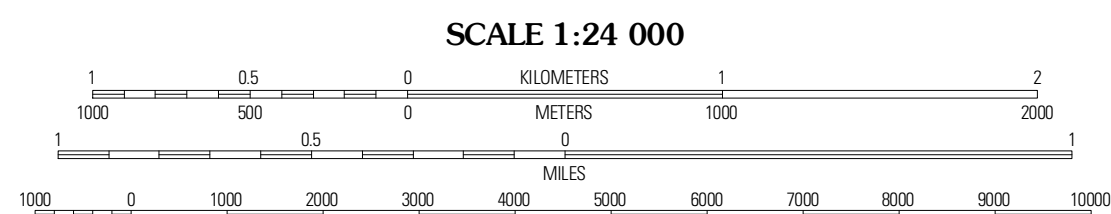


Produced by the United States Geological Survey  
North American Datum of 1983 (NAD83)  
World Geodetic System of 1984 (WGS84). Projection and  
1 000-meter grid: Universal Transverse Mercator, Zone 18T  
10 000-foot ticks: Pennsylvania Coordinate System of 1983  
(north zone), New Jersey Coordinate System of 1983

Imagery.....State of New Jersey, January 2007 - January 2008  
Other Imagery provided by DE, NY, PA  
Roads.....©2006-2010 Tele Atlas  
Names.....GNIS, 2010  
Hydrography.....National Hydrography Dataset, 2007  
Contours.....National Elevation Dataset, 2000  
Boundaries.....Census, IBWC, IBC, USGS, 1972 - 2010

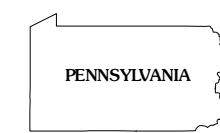
UTM GRID AND 2011 MAGNETIC NORTH  
DECLINATION AT CENTER OF SHEET

U.S. National Grid  
100,000m-Square ID  
WL  
Grid Zone Designation  
18T



CONTOUR INTERVAL 20 FEET  
NORTH AMERICAN VERTICAL DATUM OF 1988

This map was produced to conform with version 0.5.10  
of the USGS US Topo Product Standard.  
A metadata file associated with this product is draft version 0.5.15.NJ



QUADRANGLE LOCATION

|                 |                 |             |
|-----------------|-----------------|-------------|
| Pecks Pond      | Edgemoor        | Millford    |
| Twelvemile Pond | Lake Maskenzoha | Culvers Gap |
| Bushkill        | Flintsville     | Newton West |

ROAD CLASSIFICATION

Interstate Route  
US Route  
Ramp

State Route  
Local Road  
4WD

LAKE MASKENOZHA, PA-NJ  
2011

ADJOINING 7.5 QUADRANGLES