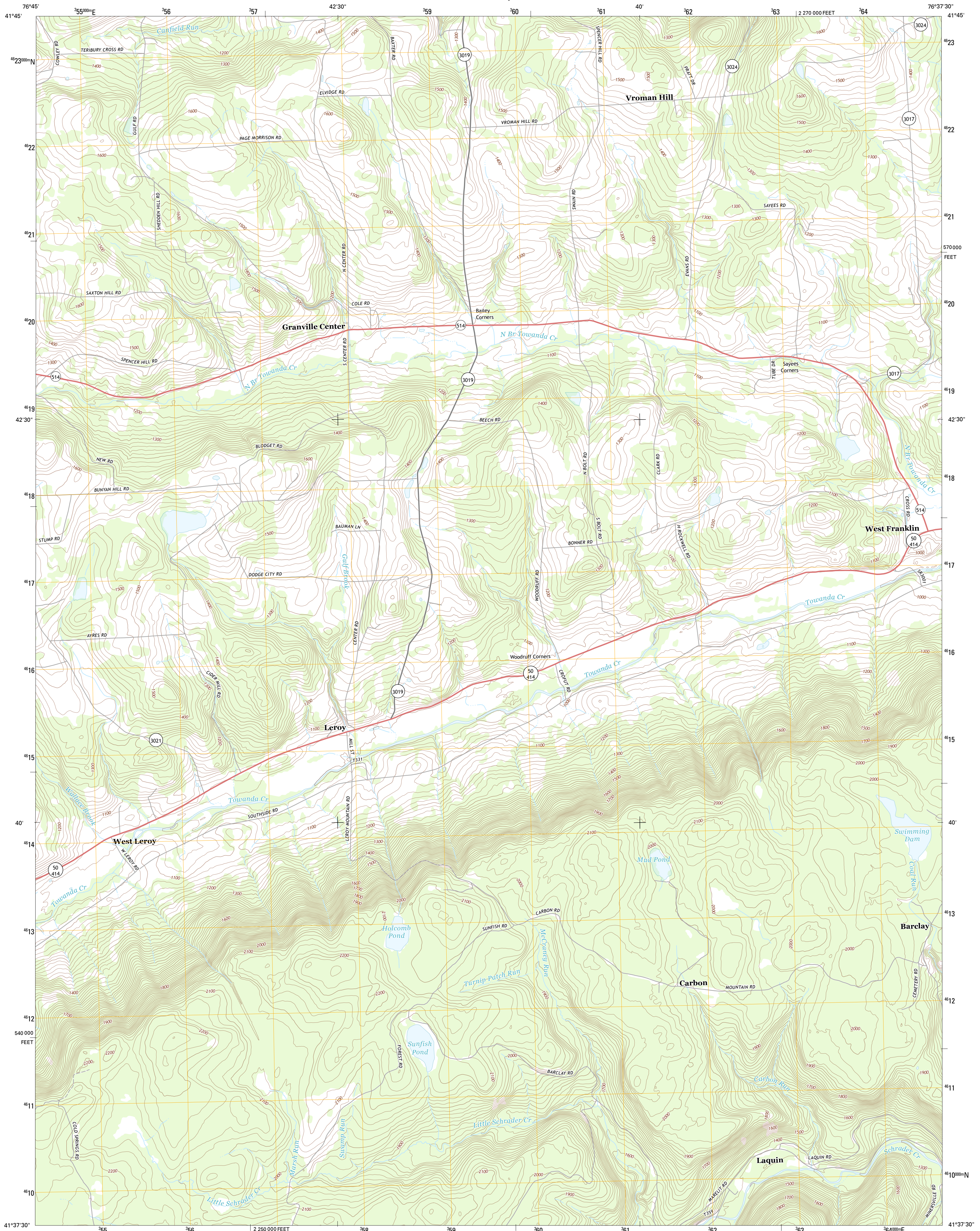




U.S. DEPARTMENT OF THE INTERIOR  
U. S. GEOLOGICAL SURVEY

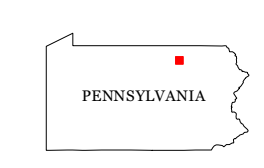
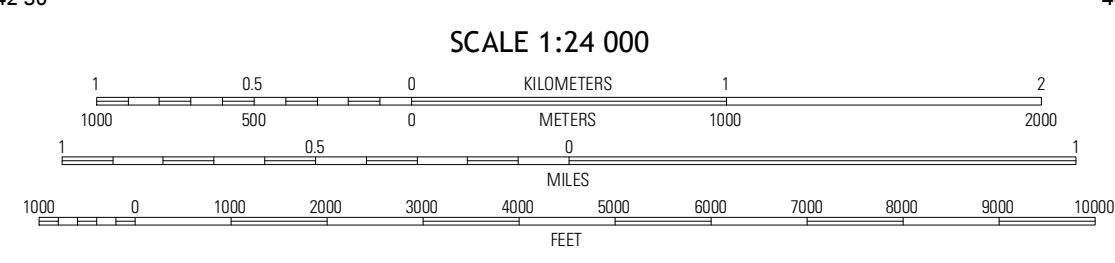
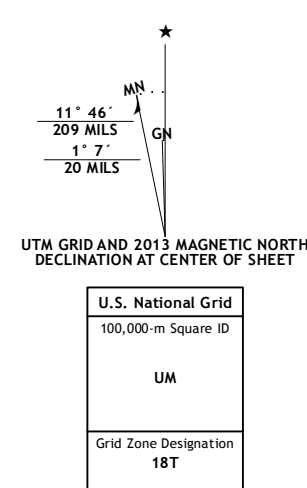


LERROY QUADRANGLE  
PENNSYLVANIA-BRADFORD CO.  
7.5-MINUTE SERIES



Produced by the United States Geological Survey  
North American Datum of 1983 (NAD83)  
World Geodetic System of 1984 (WGS84), Projection and  
1 000-meter grid: Universal Transverse Mercator, Zone 18T  
10 000-foot ticks: Pennsylvania Coordinate System of 1983  
(north zone)

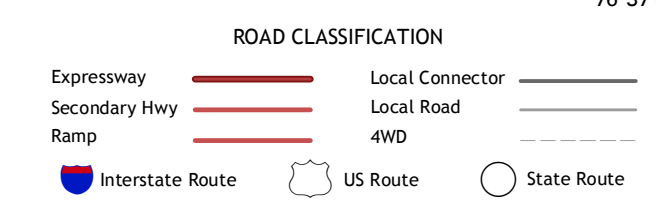
Imagery.....NAIP, July 2010 - September 2010  
Roads.....©2006-2012 TomTom  
Names.....©2013  
Hydrography.....National Hydrography Dataset, 2010  
Contours.....National Elevation Dataset, 2010  
Boundaries.....Census, IBW, IBC, USGS, 1972 - 2012



QUADRANGLE LOCATION

|        |           |         |
|--------|-----------|---------|
| Troy   | East Troy | Ulatzer |
| Canton | Leroy     | Powell  |
| Glover | Shunk     | Overton |

ADJOINING 7.5 QUADRANGLES



CONTOUR INTERVAL 20 FEET  
NORTH AMERICAN VERTICAL DATUM OF 1988

This map was produced to conform with the  
National Geospatial Program US Topo Product Standard, 2011.  
A metadata file associated with this product is draft version 0.6.11

LERROY, PA  
2013