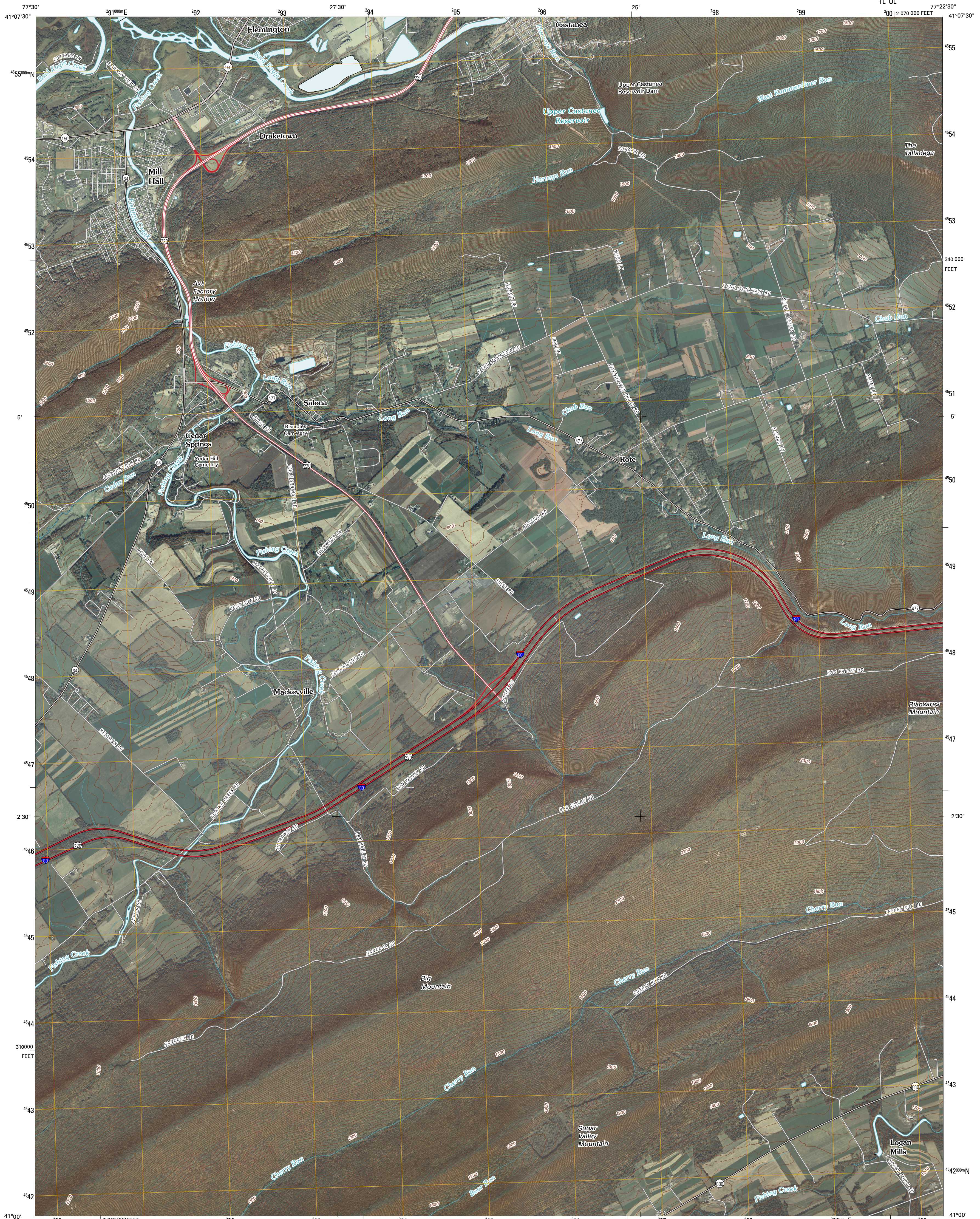




U.S. DEPARTMENT OF THE INTERIOR
U. S. GEOLOGICAL SURVEY

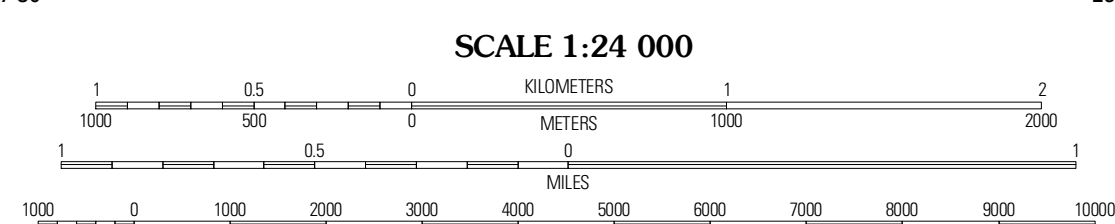
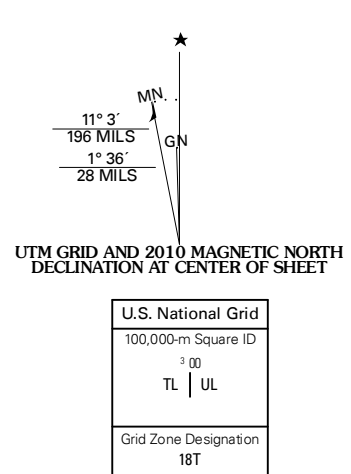


MILL HALL QUADRANGLE
PENNSYLVANIA
7.5-MINUTE SERIES
TL UL

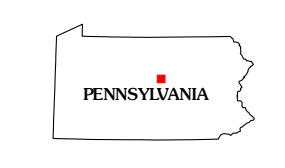


Produced by the United States Geological Survey
North American Datum of 1983 (NAD83)
World Geodetic System of 1984 (WGS84) Projection and
1 000-meter grid: Universal Transverse Mercator, Zone 18T
10 000-foot ticks: Pennsylvania Coordinate System of 1983
(north zone)

Imagery: NAIP, August 2008 - October 2008
Roads: S2006-2010 Tele Atlas
Names: GNIS, 2008
Hydrography: National Hydrography Dataset, 2008
Contours: National Elevation Dataset, 1999



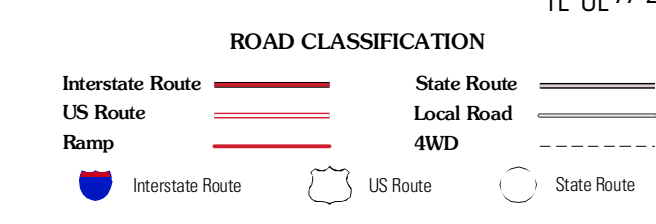
CONTOUR INTERVAL 20 FEET
NORTH AMERICAN VERTICAL DATUM OF 1988
This map was produced to conform with version 0.5.10 of the
draft USGS Standards for 7.5-Minute Quadrangle Maps.
A metadata file associated with this product is draft version 0.5.11



QUADRANGLE LOCATION

Farrandville	Lock Haven	Jersey Shore
Beech Creek	Mill Hall	Loganton
Madisonburg	Millheim	Woodward

ADJOINING 7.5' QUADRANGLES



MILL HALL, PA
2010