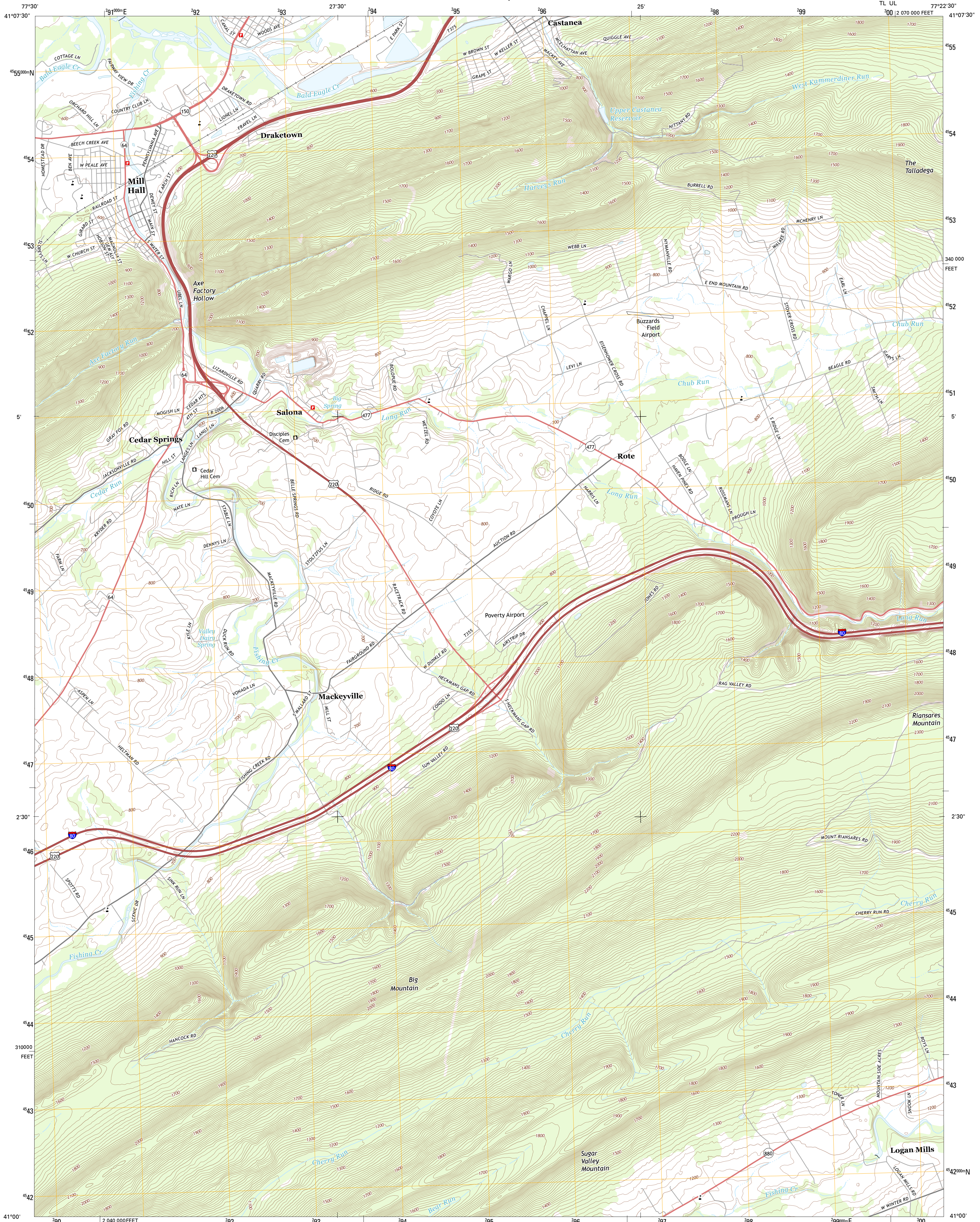




U.S. DEPARTMENT OF THE INTERIOR
U. S. GEOLOGICAL SURVEY

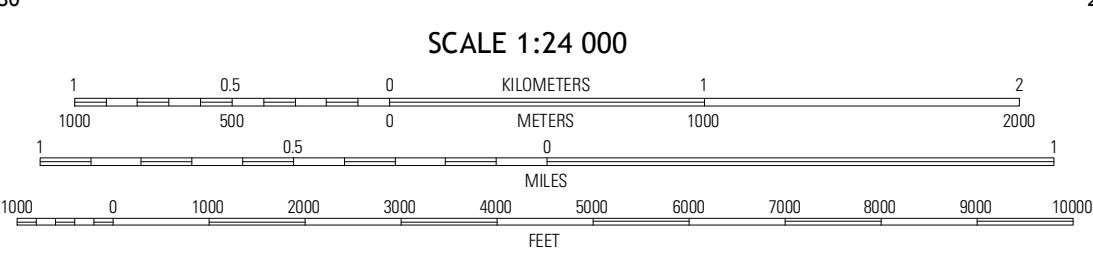
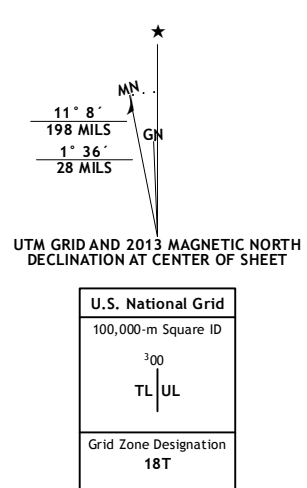


MILL HALL QUADRANGLE
PENNSYLVANIA-CLINTON CO.
7.5-MINUTE SERIES
TL UL



Produced by the United States Geological Survey
North American Datum of 1983 (NAD83)
World Geodetic System of 1984 (WGS84), Projection and
1 000-meter grid: Universal Transverse Mercator, Zone 18T
10 000-foot ticks: Pennsylvania Coordinate System of 1983
(north zone)

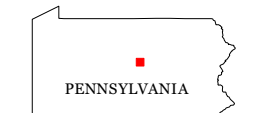
Imagery.....©NAIP, July 2010
Roads.....©2006-2012, TomTom
Names.....©2013, GNSS, 2013
Hydrography.....National Hydrography Dataset, 2010
Contours.....National Elevation Dataset, 2010
Boundaries.....Census, IBWC, IBC, USGS, 1972 - 2012



SCALE 1:24 000

CONTOUR INTERVAL 20 FEET
NORTH AMERICAN VERTICAL DATUM OF 1988

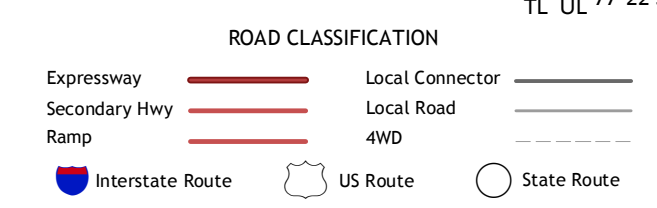
This map was produced to conform with the
National Geospatial Program US Topo Product Standard, 2011.
A metadata file associated with this product is draft version 0.6.11



QUADRANGLE LOCATION

Barrandville	Lock Haven	Jersey Shore
Beech Creek	Mill Hall	Loganton
Madisonburg	Millheim	Woodward

ADJOINING 7.5 QUADRANGLES



MILL HALL, PA
2013