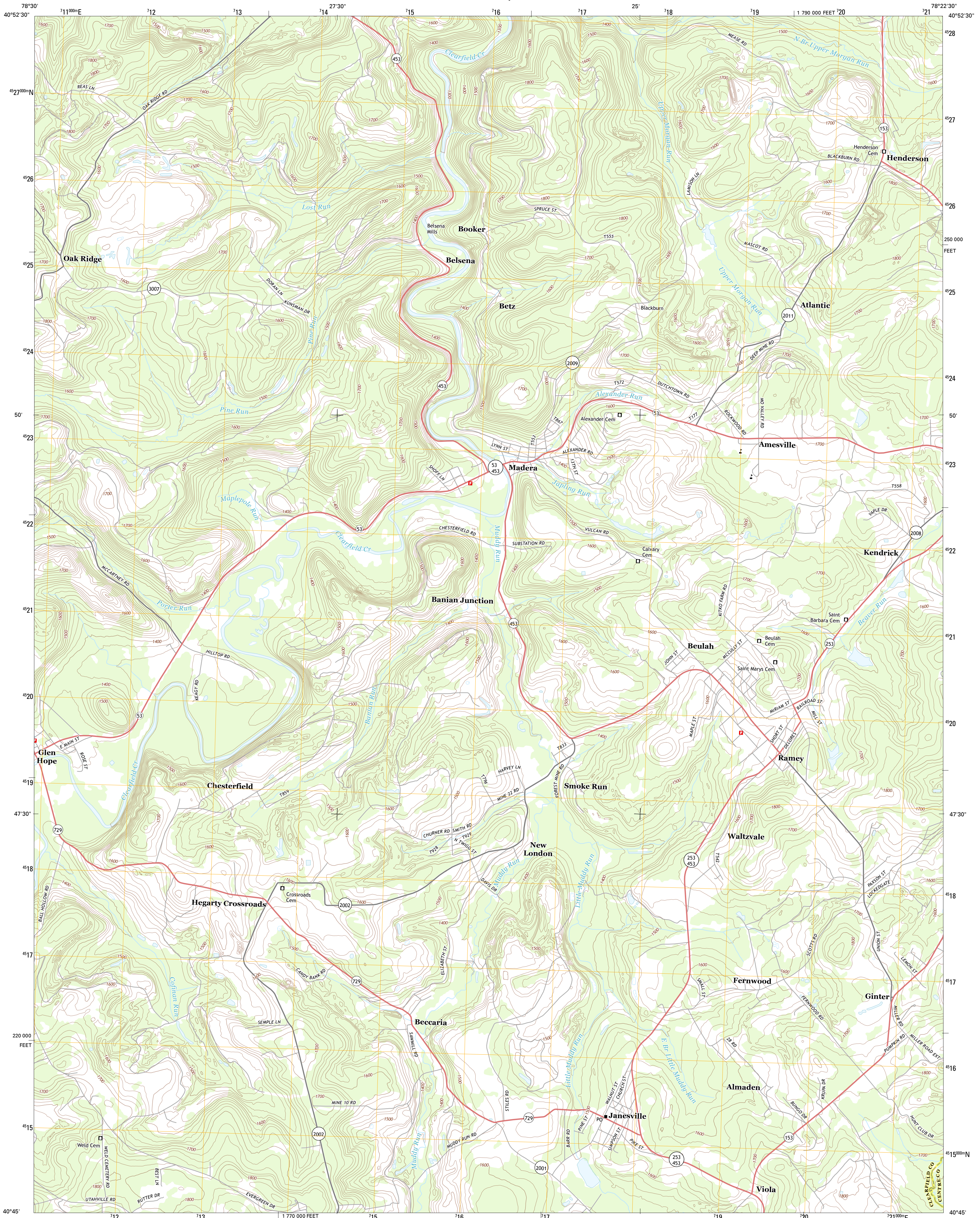




U.S. DEPARTMENT OF THE INTERIOR  
U. S. GEOLOGICAL SURVEY

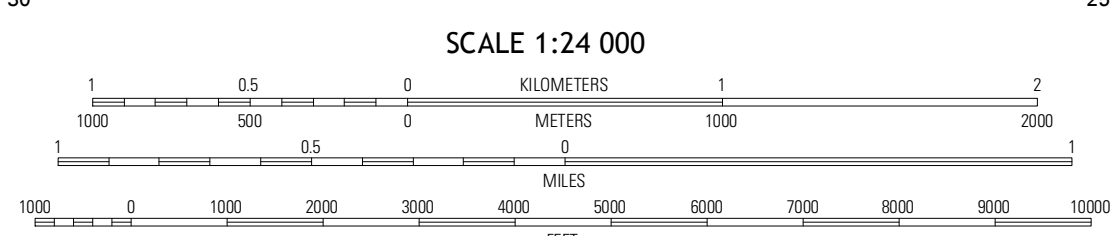
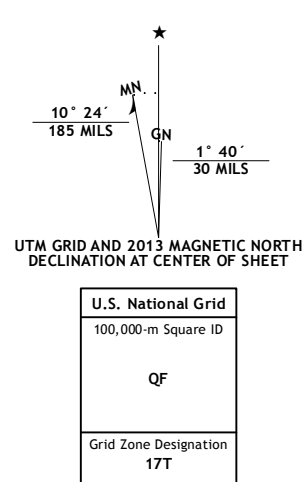


RAMEY QUADRANGLE  
PENNSYLVANIA  
7.5-MINUTE SERIES



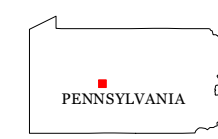
Produced by the United States Geological Survey  
North American Datum of 1983 (NAD83)  
World Geodetic System of 1984 (WGS84). Projection and  
1:000-meter grid: Universal Transverse Mercator, Zone 17T  
10 000-foot ticks: Pennsylvania Coordinate System of 1983  
(north zone)

Imagery.....NAIP, September 2010  
Roads.....©2006-2012 TomTom  
Names.....©2013 GNS  
Hydrography.....National Hydrography Dataset, 2010  
Contours.....National Elevation Dataset, 2010  
Boundaries.....Census, IBWC, IBC, USGS, 1972 - 2012



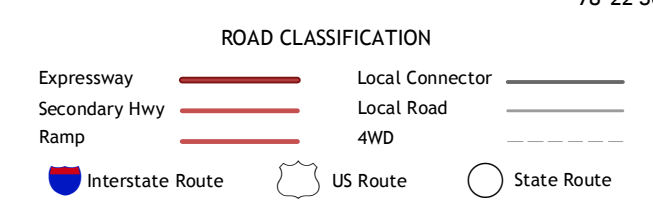
CONTOUR INTERVAL 20 FEET  
NORTH AMERICAN VERTICAL DATUM OF 1988

This map was produced to conform with the  
National Geospatial Program US Topo Product Standard, 2011.  
A metadata file associated with this product is draft version 0.6.11



QUADRANGLE LOCATION

|               |            |             |
|---------------|------------|-------------|
| Burwellsville | Glen Richy | Wallacetown |
| Irivona       | Ramey      | Houtsdale   |
| Coalport      | Hantzburg  | Tipton      |



RAMEY, PA  
2013

ADJOINING 7.5' QUADRANGLES