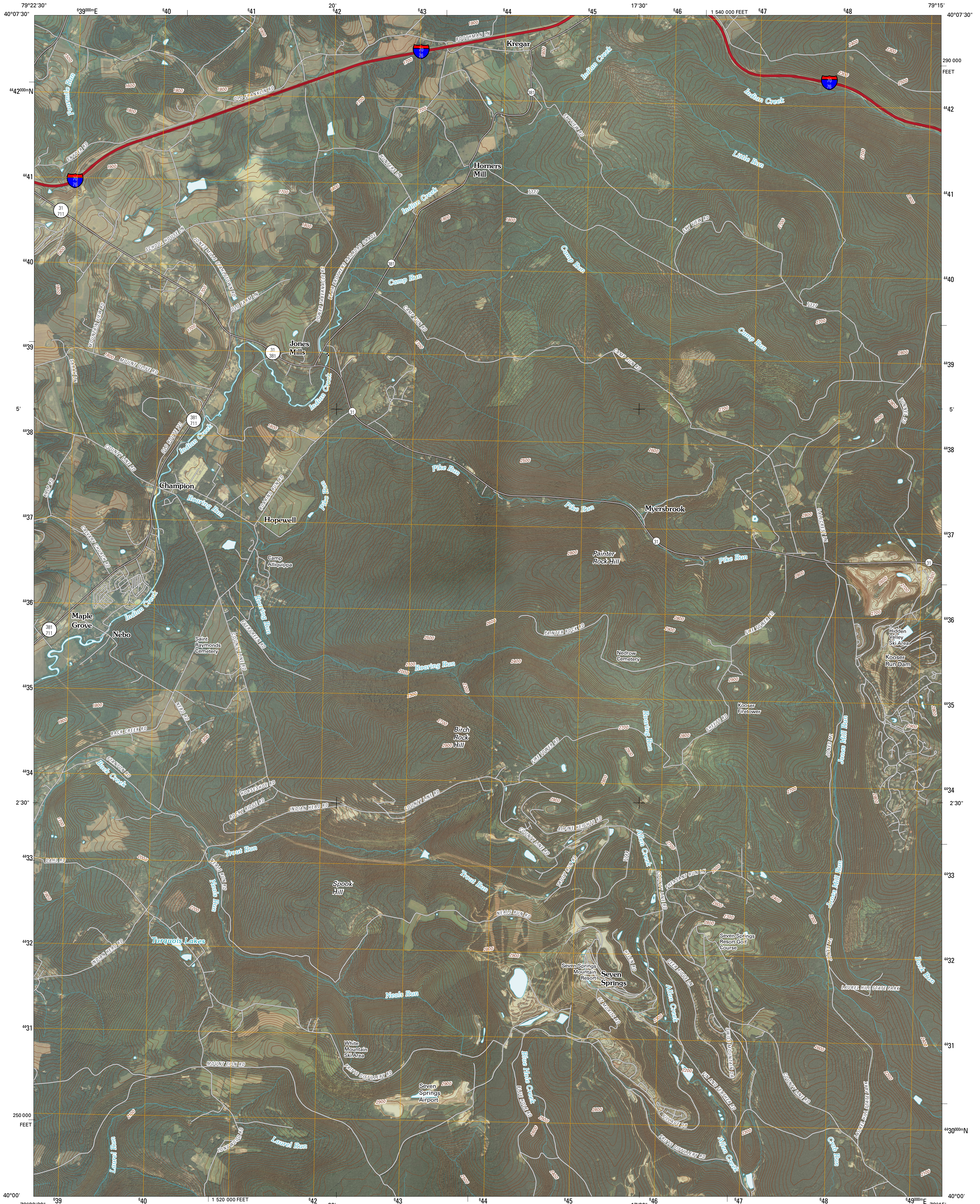




U.S. DEPARTMENT OF THE INTERIOR
U. S. GEOLOGICAL SURVEY

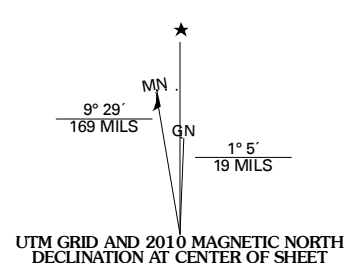


SEVEN SPRINGS QUADRANGLE
PENNSYLVANIA
7.5-MINUTE SERIES

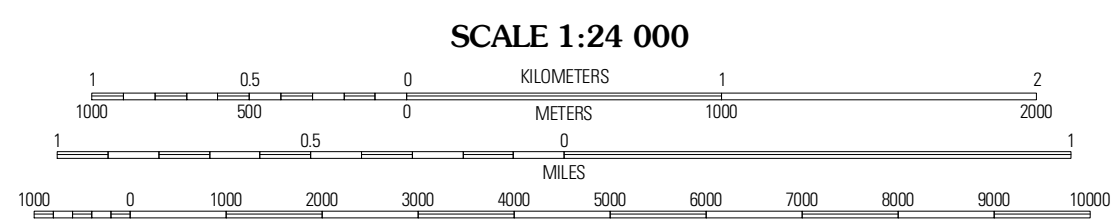


Produced by the United States Geological Survey
North American Datum of 1983 (NAD83)
World Geodetic System of 1984 (WGS84). Projection and
1 000-meter grid: Universal Transverse Mercator, Zone 17T
10 000-foot ticks: Pennsylvania Coordinate System of 1983
(south zone)

Imagery.....NAP, July 2008
Roads.....62006-2010 T-4e Atlas
Names.....GNIS, 2008
Hydrography.....National Hydrography Dataset, 2008
Contours.....National Elevation Dataset, 2001

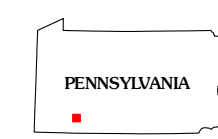


| |
|-----------------------|
| U.S. National Grid |
| 100,000m Square ID |
| FE |
| Grid Zone Designation |
| 17T |



CONTOUR INTERVAL 20 FEET
NORTH AMERICAN VERTICAL DATUM OF 1988

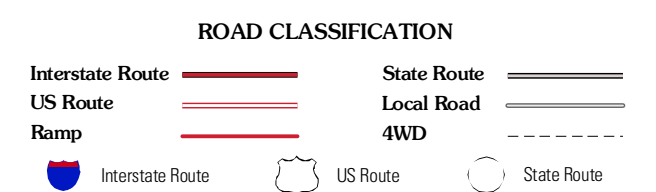
This map was produced to conform with version 0.5.10 of the
draft USGS Standards for 7.5-Minute Quadrangle Maps.
A metadata file associated with this product is draft version 0.5.11



QUADRANGLE LOCATION

| | | |
|----------|-------------------|-------------|
| Mammoth | Stabtown | Ligonier |
| Donegal | Seven Springs | Bakersville |
| Mill Run | Ringwood/Rockwood | |

ADJOINING 7.5 QUADRANGLES



SEVEN SPRINGS, PA
2010