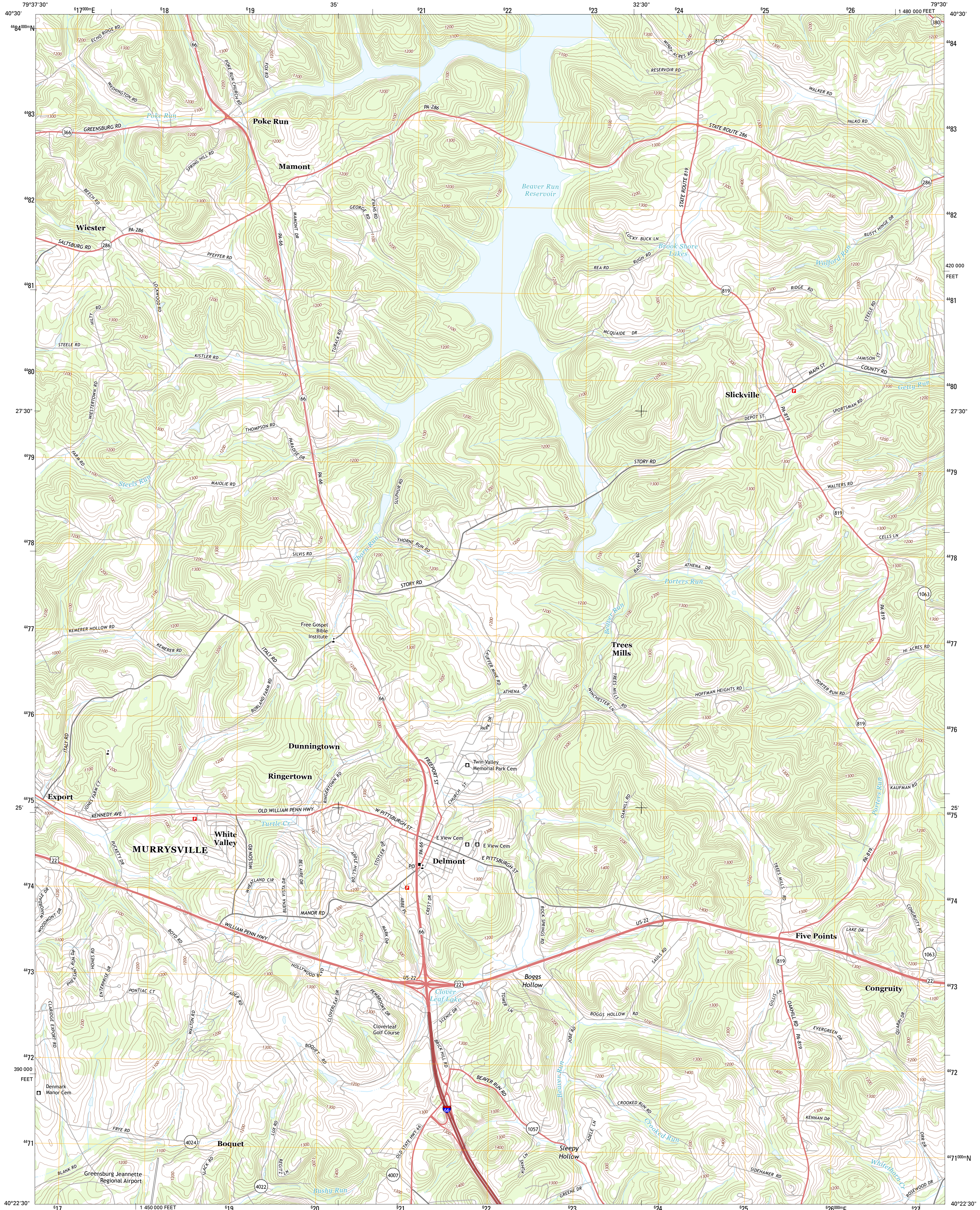




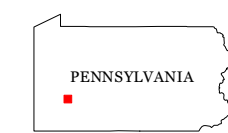
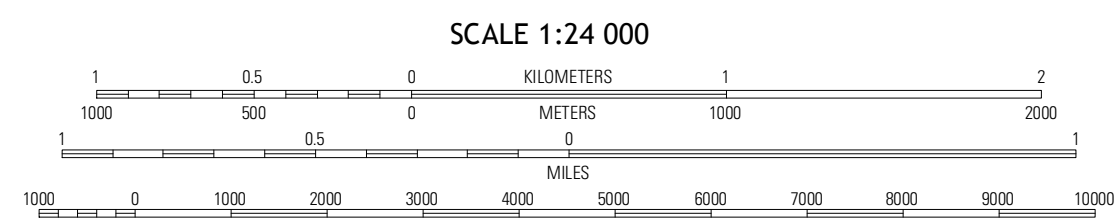
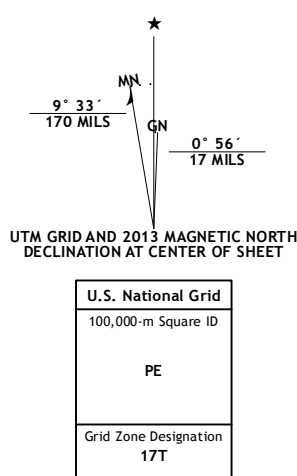
U.S. DEPARTMENT OF THE INTERIOR
U. S. GEOLOGICAL SURVEY



SLICKVILLE QUADRANGLE
PENNSYLVANIA-WESTMORELAND CO.
7.5-MINUTE SERIES

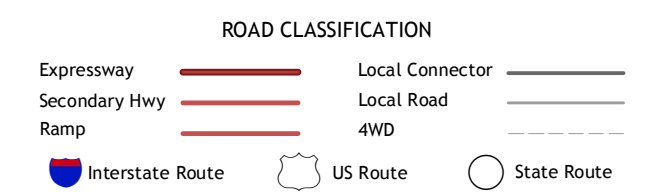


Produced by the United States Geological Survey
North American Datum of 1983 (NAD83)
World Geodetic System of 1984 (WGS84) Projection and
1 000-meter grid: Universal Transverse Mercator, Zone 17T
10 000-foot ticks: Pennsylvania Coordinate System of 1983
(south zone)



QUADRANGLE LOCATION

| | | |
|---------------------|-------------|-----------|
| New Kensington East | Vandergriff | Avonmore |
| Murrysville | Slickville | Salisbury |
| Irwin | Greensburg | Latrobe |



Imagery.....NAIP, June 2010
Roads.....©2006-2012 TomTom
Names.....GNIS, 2013
Hydrography.....National Hydrography Dataset, 2010
Contours.....National Elevation Dataset, 2010
Boundaries.....Census, IBW, IBC, USGS, 1972-2012

CONTOUR INTERVAL 20 FEET
NORTH AMERICAN VERTICAL DATUM OF 1988

This map was produced to conform with the
National Geospatial Program US Topo Product Standard, 2011.
A metadata file associated with this product is draft version 0.6.11

SLICKVILLE, PA
2013

ADJOINING 7.5 QUADRANGLES