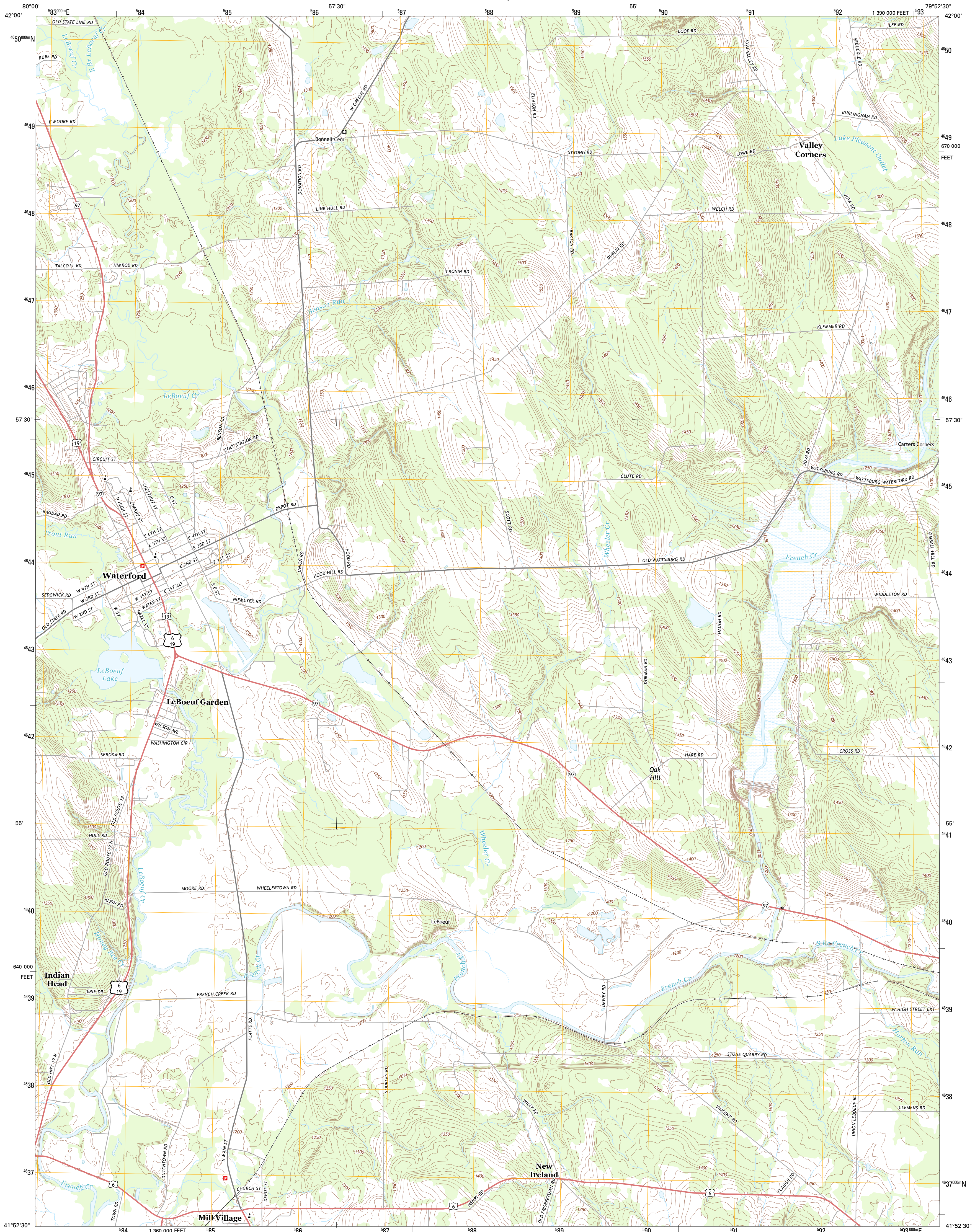




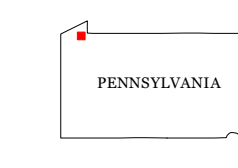
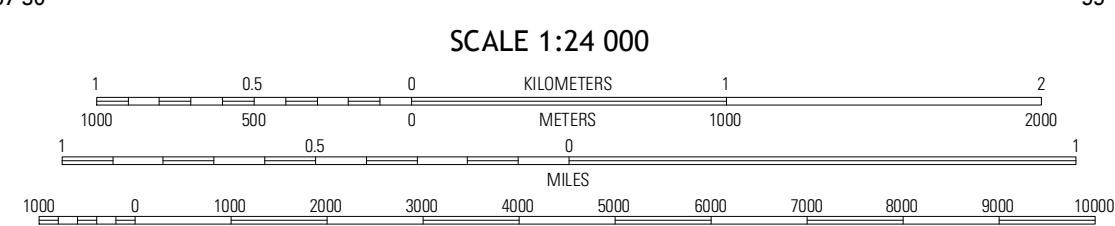
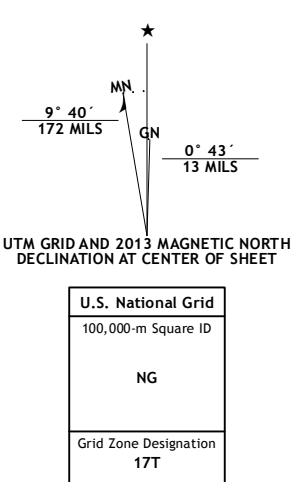
U.S. DEPARTMENT OF THE INTERIOR
U. S. GEOLOGICAL SURVEY



WATERFORD QUADRANGLE
PENNSYLVANIA-ERIE CO.
7.5-MINUTE SERIES

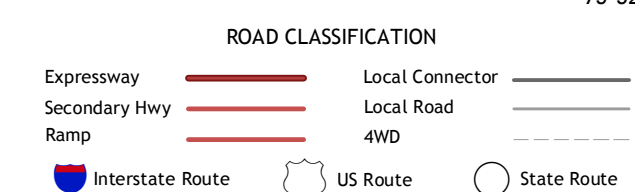


Produced by the United States Geological Survey
North American Datum of 1983 (NAD83)
World Geodetic System of 1984 (WGS84), Projection and
1 000-meter grid; Universal Transverse Mercator, Zone 17T
10 000-foot ticks; Pennsylvania Coordinate System of 1983
(north zone)



QUADRANGLE LOCATION

Erie South	Hammett	Watsburg
Cambridge Springs NE	Waterford	Union City
Cambridge Springs	Millers Station	Lake Canadota



CONTOUR INTERVAL 10 FEET
NORTH AMERICAN VERTICAL DATUM OF 1988

This map was produced to conform with the National Geospatial Program US Topo Product Standard, 2011. A metadata file associated with this product is draft version 0.6.11

WATERFORD, PA
2013

ADJOINING 7.5 QUADRANGLES