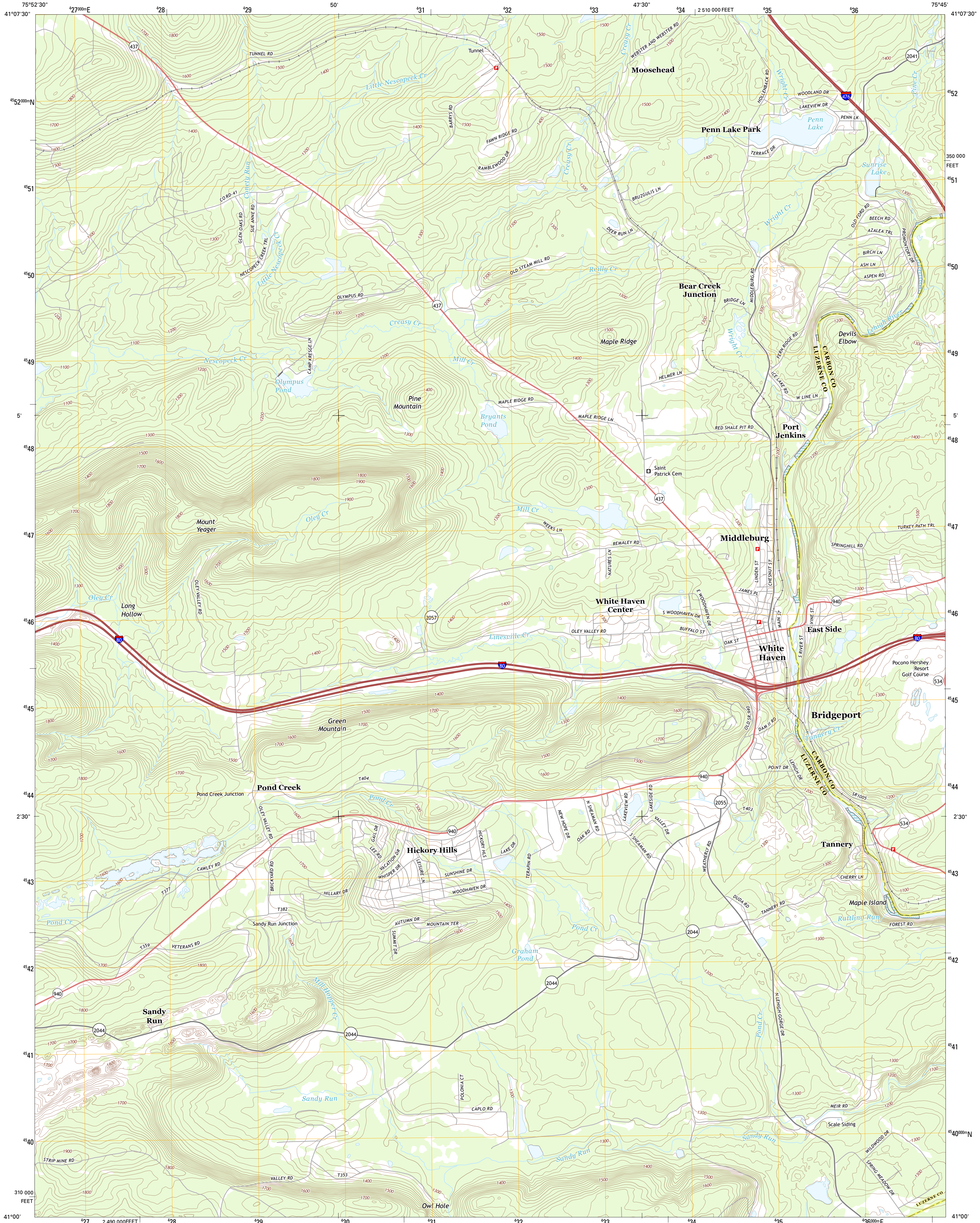




U.S. DEPARTMENT OF THE INTERIOR
U. S. GEOLOGICAL SURVEY



WHITE HAVEN QUADRANGLE
PENNSYLVANIA
7.5-MINUTE SERIES



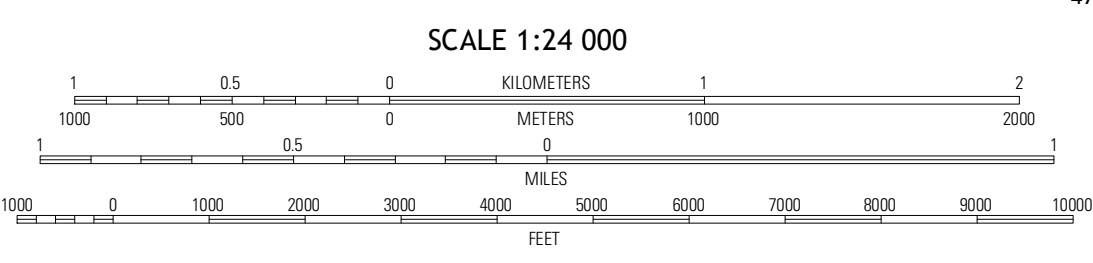
Produced by the United States Geological Survey
North American Datum of 1983 (NAD83)
World Geodetic System of 1984 (WGS84). Projection and
1 000-meter grid: Universal Transverse Mercator, Zone 18T
10 000-foot ticks: Pennsylvania Coordinate System of 1983
(north zone)

UTM GRID AND 2013 MAGNETIC NORTH DECLINATION AT CENTER OF SHEET

12.8
214 MILS
0.37
9 MILS

U.S. National Grid
100,000-m Square ID
VL

Grid Zone Designation
18T



ROAD CLASSIFICATION

Expressway
Secondary Hwy
Ramp
Interstate Route

Local Connector
Local Road
4WD
US Route
State Route

QUADRANGLE LOCATION

Wilkes-Barre West	Wilkes-Barre East	Pleasant View Summit
Freeland	White Haven	Hickory Run
Hazleton	Weatherly	Christmans

ADJOINING 7.5 QUADRANGLES

Imagery.....NAIP, July 2010 - September 2010
Roads.....©2006-2012 TomTom
Names.....©2013
Hydrography.....National Hydrography Dataset, 2010
Contours.....National Elevation Dataset, 2000
Boundaries.....Census, IBWC, IBC, USGS, 1972 - 2012

CONTOUR INTERVAL 20 FEET
NORTH AMERICAN VERTICAL DATUM OF 1988

This map was produced to conform with the
National Geospatial Program US Topo Product Standard, 2011.
A metadata file associated with this product is draft version 0.6.11

WHITE HAVEN, PA
2013