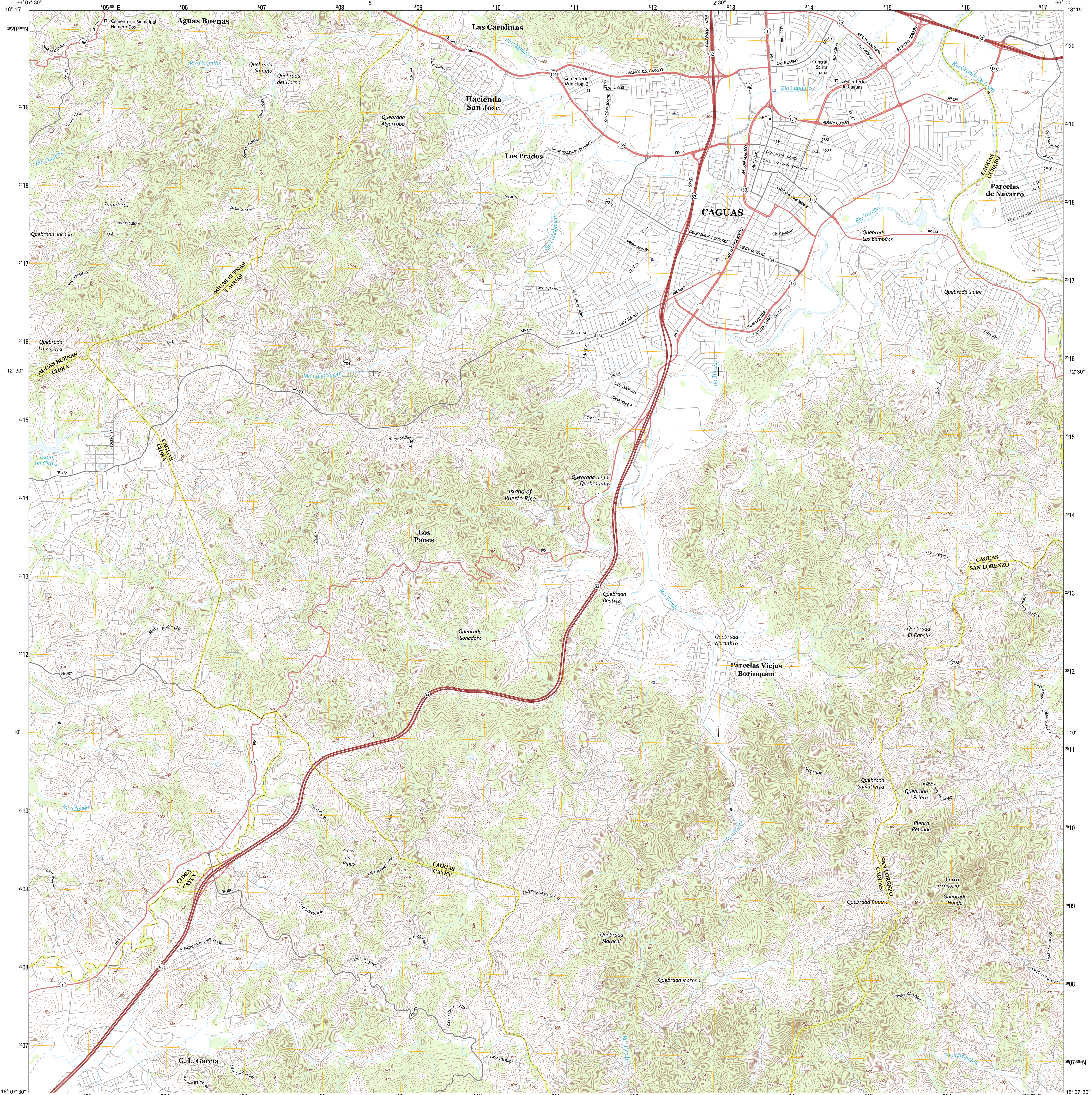




U.S. DEPARTMENT OF THE INTERIOR
U. S. GEOLOGICAL SURVEY

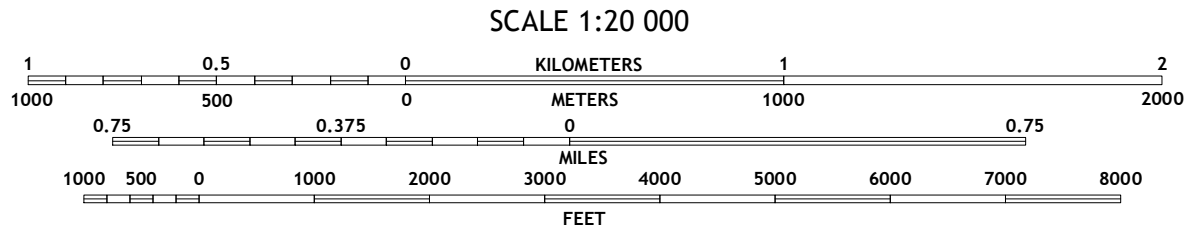
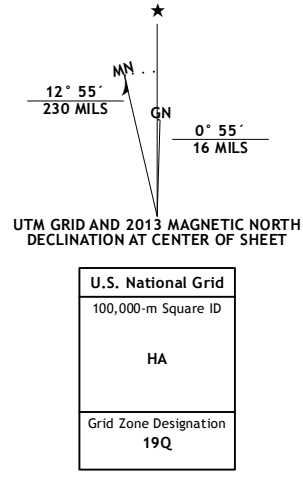


CAGUAS QUADRANGLE
PUERTO RICO
7.5-MINUTE SERIES



Produced by the United States Geological Survey
North American Datum of 1983 (NAD83)
World Geodetic System of 1984 (WGS84). Projection and
1 000-meter grid: Universal Transverse Mercator, Zone 19Q

Imagery.....U.S. Army Corps of Engineers, 2011
Roads.....2006-2012 TomTom
Names.....GNIS, 2013
Hydrography.....National Hydrography Dataset, 2011
Contours.....National Elevation Dataset, 2010
Boundaries.....Census, IBWC, IBC, USGS, 1972 - 2012
Public Land Survey System.....BLM, 2006 - 2008



CONTOUR INTERVAL 20 FEET
DATUM: U.S. LOCAL MEAN SEA LEVEL
This map was produced to conform with the
National Geospatial Program US Topo Product Standard, 2011.
A metadata file associated with this product is draft version 0.6.13



PUERTO RICO and the U.S. VIRGIN ISLANDS
QUADRANGLE LOCATION

| | | | |
|---|---|---|----------------|
| 1 | 2 | 3 | 1 Naranjito |
| 4 | | 5 | 2 Aguas Buenas |
| 6 | 7 | 8 | 3 Gurabo |
| | | | 4 Comerio |
| | | | 5 Juncos |
| | | | 6 Cayey |
| | | | 7 Patillas |
| | | | 8 Yabucoa |

ADJOINING QUADRANGLES

ADJOINING QUADRANGLES

| ROAD CLASSIFICATION | |
|---------------------|-----------------|
| Expressway | Local Connector |
| Secondary Hwy | Local Road |
| Ramp | 4WD |
| Interstate Route | US Route |
| | State Route |

CAGUAS, PR
2013

