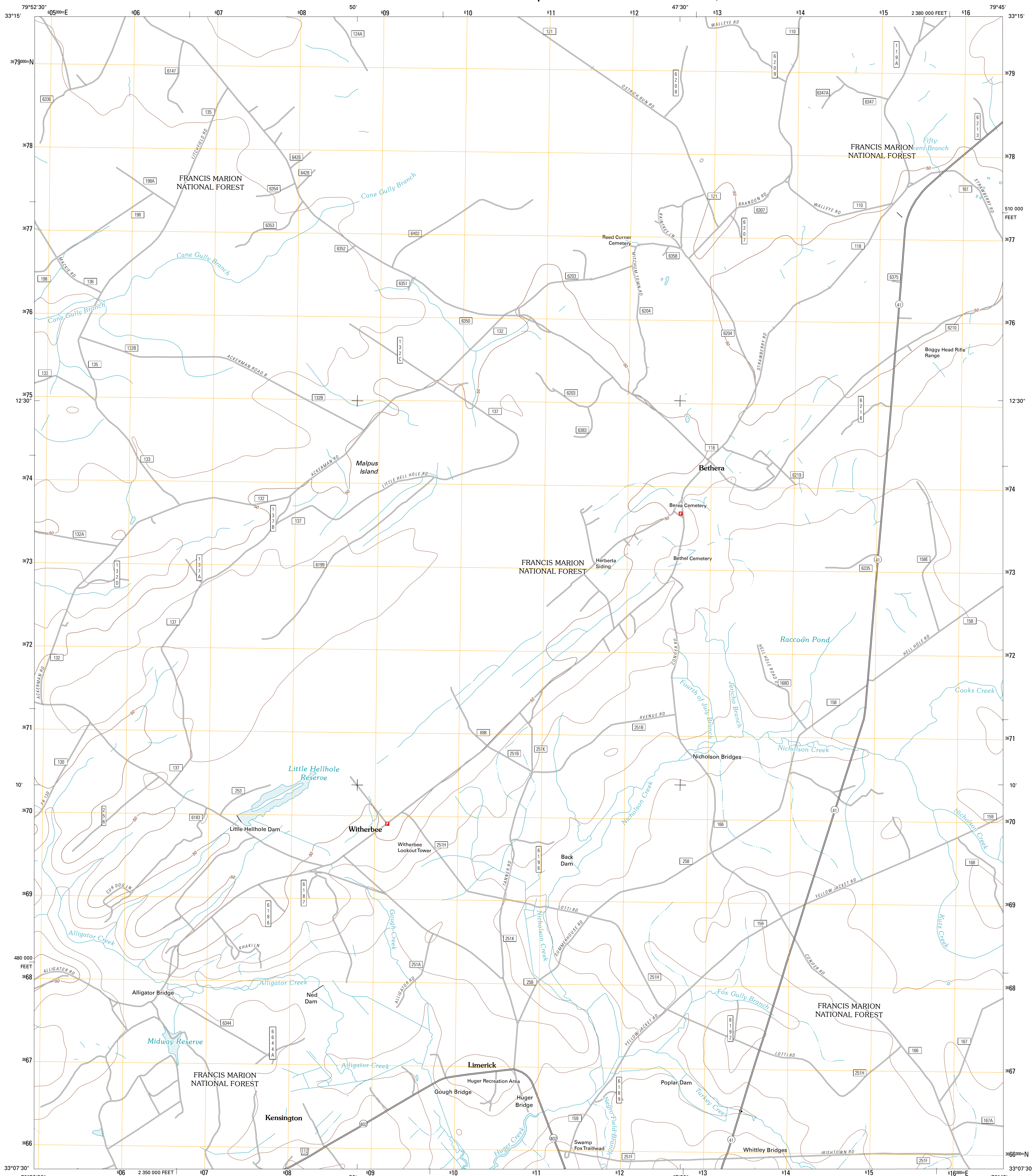




U.S. DEPARTMENT OF THE INTERIOR  
U. S. GEOLOGICAL SURVEY

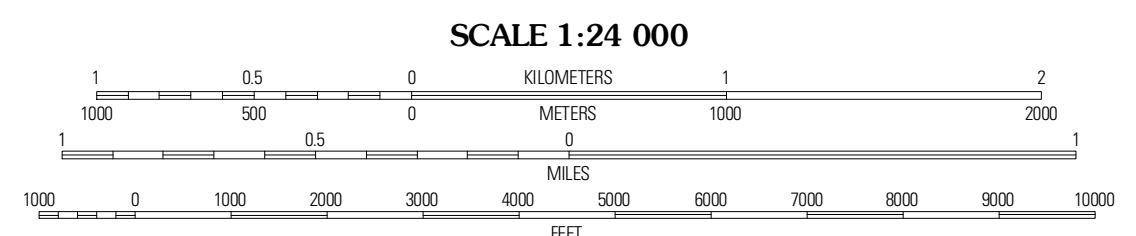
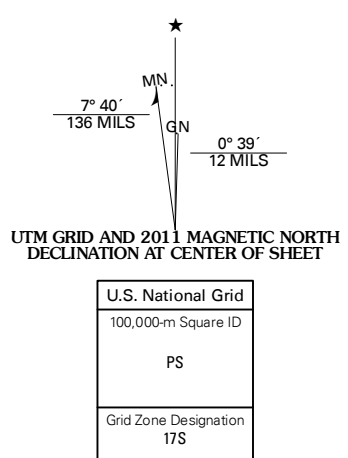


BETHERA QUADRANGLE  
SOUTH CAROLINA-BERKELEY CO.  
7.5-MINUTE SERIES



Produced by the United States Geological Survey  
North American Datum of 1983 (NAD83)  
World Geodetic System of 1984 (WGS84). Projection and  
1 000-meter grid: Universal Transverse Mercator, Zone 17S  
10 000-foot ticks: South Carolina Coordinate System of 1983

Imagery: N.A.P. April 2009  
Roads: ©2006-2010 Tele Atlas  
Roads within US Forest Service Lands: FSTopo Data  
with limited Forest Service updates, 2009  
Names: National Hydrography Dataset, 2009  
Hydrography: National Hydrography Dataset, 2009  
Contours: National Elevation Dataset, 2003  
Boundaries: Census, BWC, IBC, USGS, 1972 - 2010



CONTOUR INTERVAL 10 FEET  
NORTH AMERICAN VERTICAL DATUM OF 1988  
This map was produced to conform with version 0.5.10  
of the USGS US Topo Product Standard.  
A metadata file associated with this product is draft version 0.5.16



QUADRANGLE LOCATION

Bonneau	Alvin	Jamestown
Corderville	Betheria	Shulerville
Ritledge	Huger	Ocean Bay

**ROAD CLASSIFICATION**

- Interstate Route
- US Route
- Ramp
- State Route
- Local Road
- 4WD
- US Route
- FS Passenger Route
- FS High Clearance Route

Check with local Forest Service unit for current travel conditions and restrictions.

BETHERA, SC  
2011

ADJOINING 7.5 QUADRANGLES