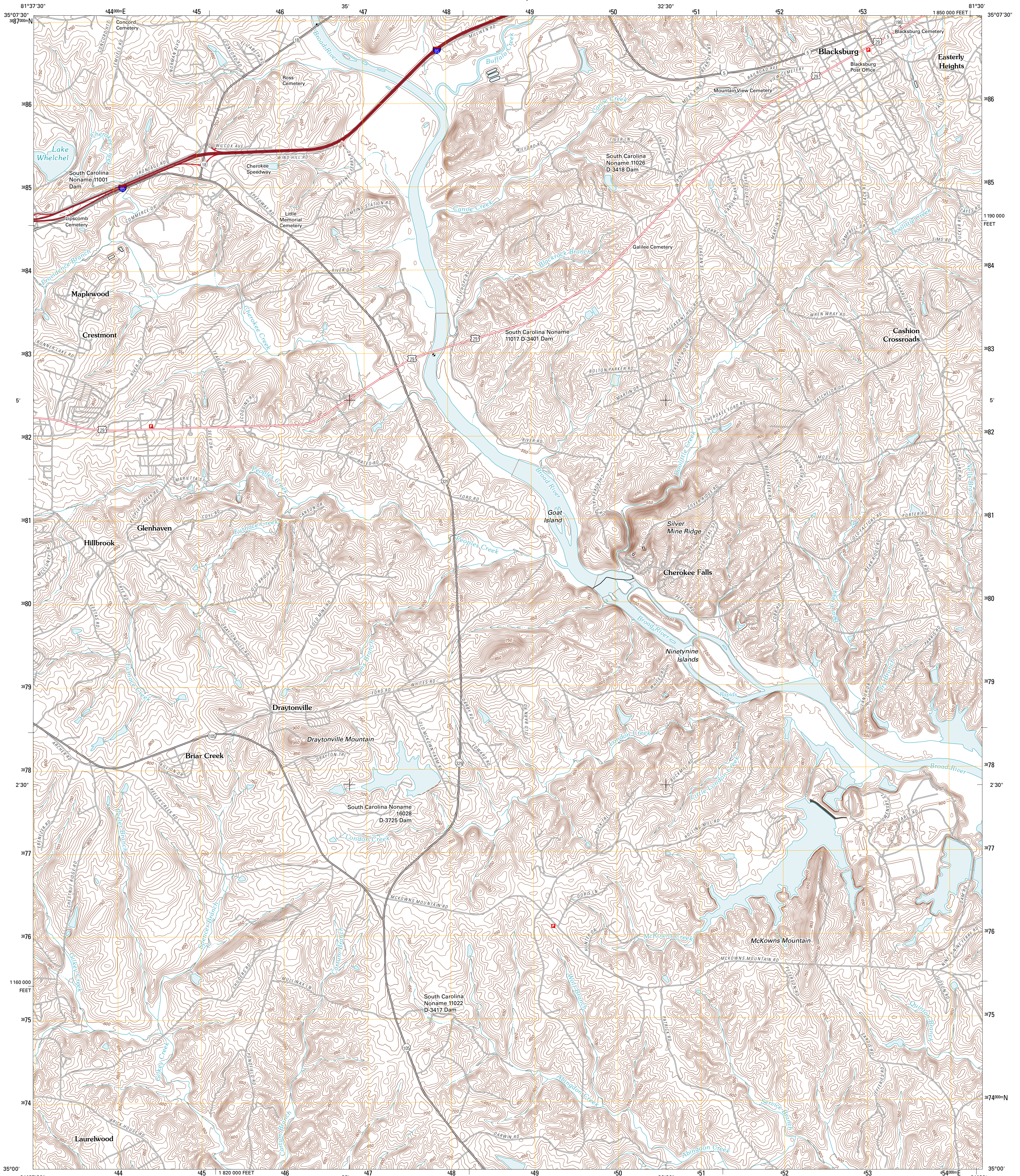




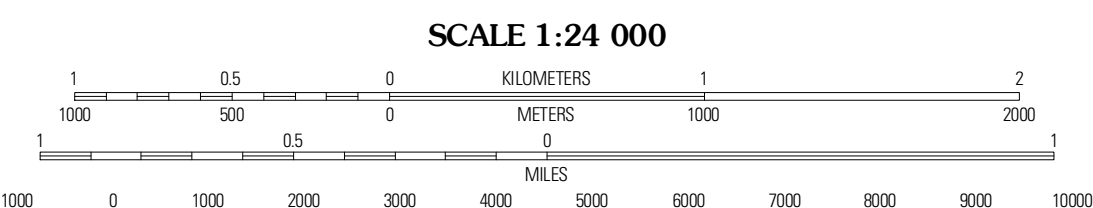
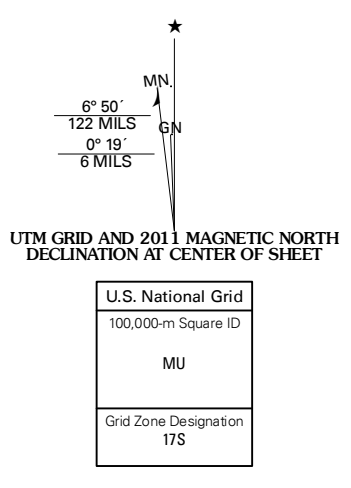
U.S. DEPARTMENT OF THE INTERIOR
U. S. GEOLOGICAL SURVEY



BLACKSBURG SOUTH QUADRANGLE
SOUTH CAROLINA-CHEROKEE CO.
7.5-MINUTE SERIES



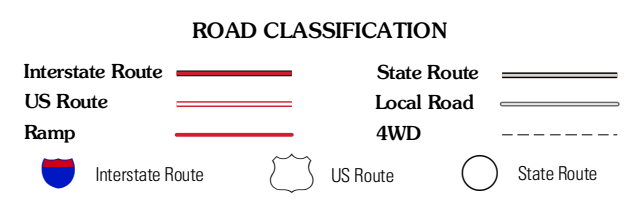
Produced by the United States Geological Survey
North American Datum of 1983 (NAD83)
World Geodetic System of 1984 (WGS84) Projection and
1 000-meter grid: Universal Transverse Mercator, Zone 17S
10 000-foot ticks: South Carolina Coordinate System of 1983



QUADRANGLE LOCATION

Bolling Springs South	Blacksburg North	Grover
Caffrey	Blacksburg South	Kings Creek
Picolet Mills	Wilkesville	Hickory Grove

ADJOINING 7.5 QUADRANGLES



CONTOUR INTERVAL 10 FEET
NORTH AMERICAN VERTICAL DATUM OF 1988

This map was produced to conform with version 0.5.10 of the USGS US Topo Product Standard.
A metadata file associated with this product is draft version 0.5.16

BLACKSBURG SOUTH, SC
2011