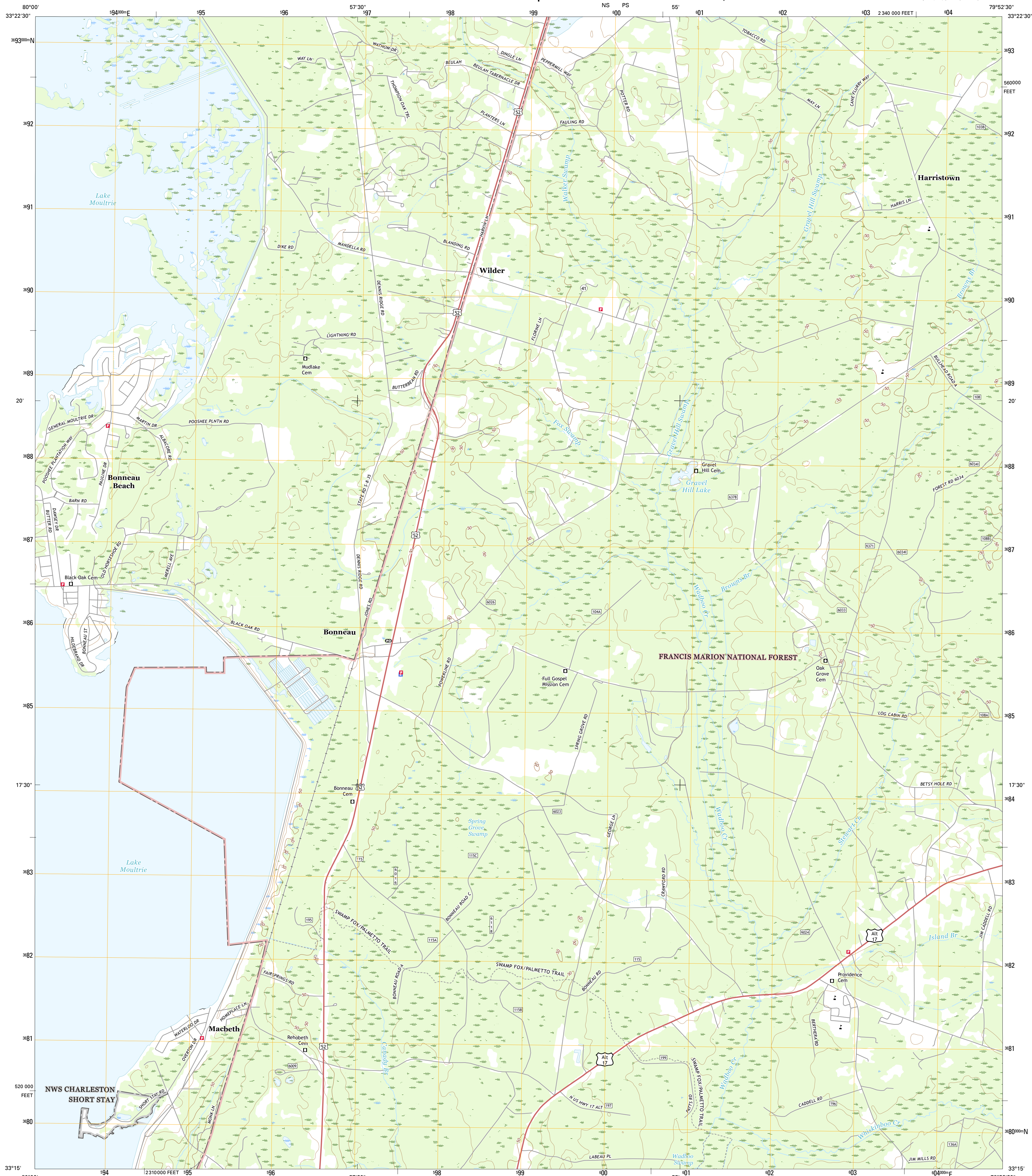




U.S. DEPARTMENT OF THE INTERIOR  
U.S. GEOLOGICAL SURVEY



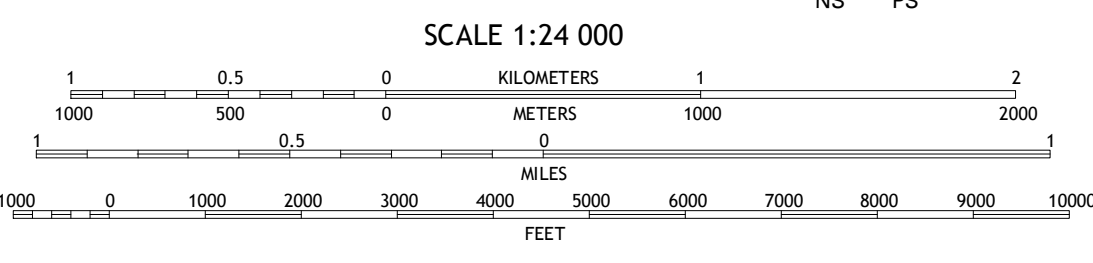
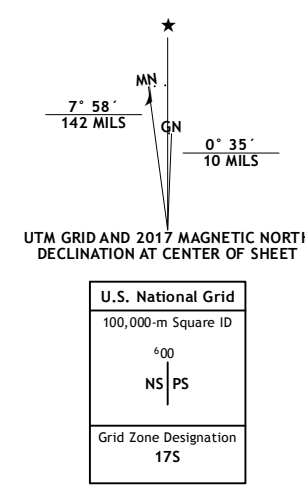
BONNEAU QUADRANGLE  
SOUTH CAROLINA-BERKELEY CO.  
7.5-MINUTE SERIES



Produced by the United States Geological Survey  
North American Datum of 1983 (NAD83)  
World Geodetic System of 1984 (WGS84). Projection and  
1 000-meter grid: Universal Transverse Mercator, Zone 17S  
10 000-foot ticks: South Carolina Coordinate System of 1983

This map is not a legal document. Boundaries may be  
generalized for this map scale. Private lands within government  
reservations may not be shown. Obtain permission before  
entering private lands.

Imagery: NADP, July 2015  
Roads: U.S. Census Bureau, 2015 - 2016  
Roads within US Forest Service Lands: FSTopo Data  
with limited Forest Service updates, 2012 - 2016  
Names: GNIS, 2016  
Hydrography: National Hydrography Dataset,  
2015  
Contours: National Elevation Dataset, 2012  
Boundaries: Multiple sources; see metadata file 1972 - 2016  
Wetlands: FWS National Wetlands Inventory 1977 - 2014



CONTOUR INTERVAL 5 FEET  
NORTH AMERICAN VERTICAL DATUM OF 1988  
This map was produced to conform with the  
National Geospatial Program US Topo Product Standard, 2011.  
A metadata file associated with this product is draft version 0.6.19



1	2	3
4	5	6
7	8	9

- 1 Pineville
- 2 Saint Stephen
- 3 Blakely
- 4 Chicora
- 5 Alvin
- 6 Moncks Corner
- 7 Cordesville
- 8 Bethera

**ROAD CLASSIFICATION**

- Expressway
- Secondary Hwy
- Ramp
- Interstate Route
- FS Primary Route
- Local Connector
- Local Road
- 4WD
- US Route
- FS Passenger Route
- FS High Clearance Route
- State Route

Check with local Forest Service unit  
for current travel conditions and restrictions.

BONNEAU, SC  
2017



NSN 7540-01-000-0000  
USGS X 2 4 4 8 0 9  
USGS REF NO. U.S.G.S.X.2.4.4.8.0.9