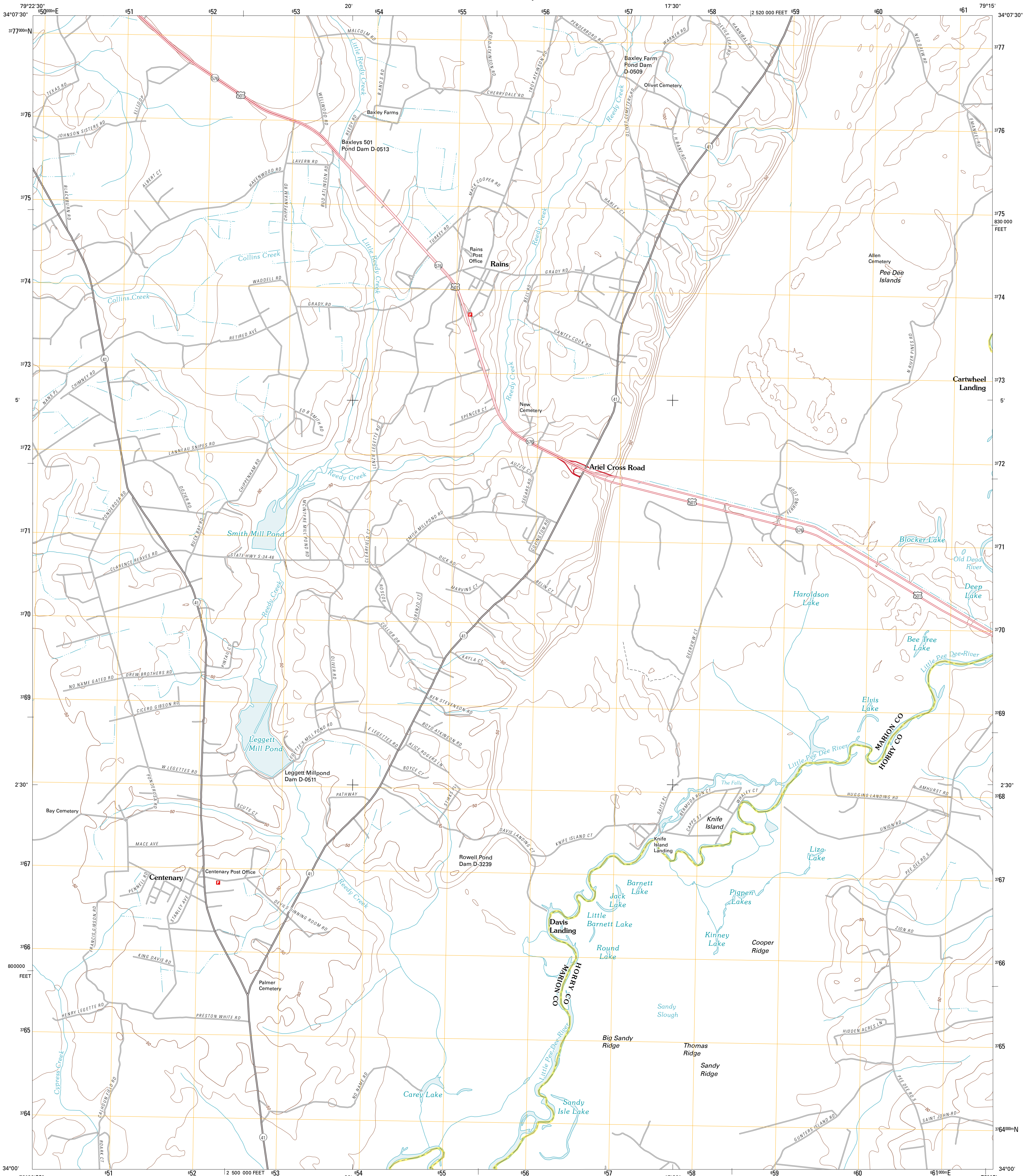




U.S. DEPARTMENT OF THE INTERIOR
U. S. GEOLOGICAL SURVEY

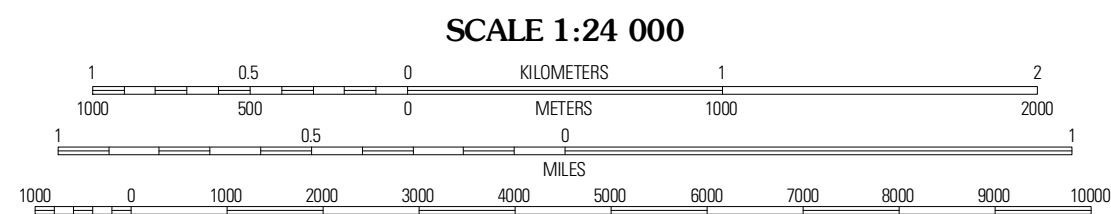
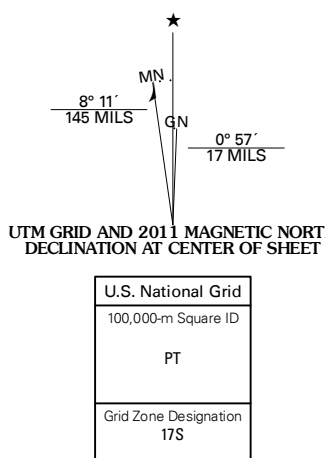


CENTENARY QUADRANGLE
SOUTH CAROLINA
7.5-MINUTE SERIES



Produced by the United States Geological Survey
North American Datum of 1983 (NAD83)
World Geodetic System of 1984 (WGS84). Projection and
1 000-meter grid: Universal Transverse Mercator, Zone 17S
10 000-foot ticks: South Carolina Coordinate System of 1983

Imagery: N/AIP, June 2009
Roads: ©2006-2010 Tele Atlas
Names: GNIS, 2010
Hydrography: National Hydrography Dataset, 2009
Contours: National Elevation Dataset, 2011
Boundaries: Census, IBWC, USGS, 1972-2010

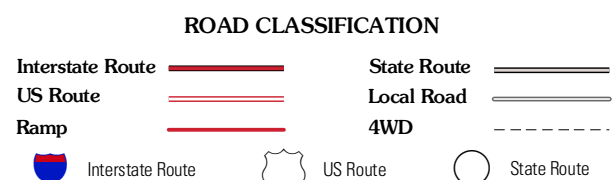


CONTOUR INTERVAL 10 FEET
NORTH AMERICAN VERTICAL DATUM OF 1988
This map was produced to conform with version 0.5.10
of the USGS US Topo Product Standard.
A metadata file associated with this product is draft version 0.5.16



Marion	Mullins	Nichols
Friendship	Centenary	Gulva's Ferry
Gresham	Brittons Neck	Horry

ADJOINING 7.5 QUADRANGLES



CENTENARY, SC
2011