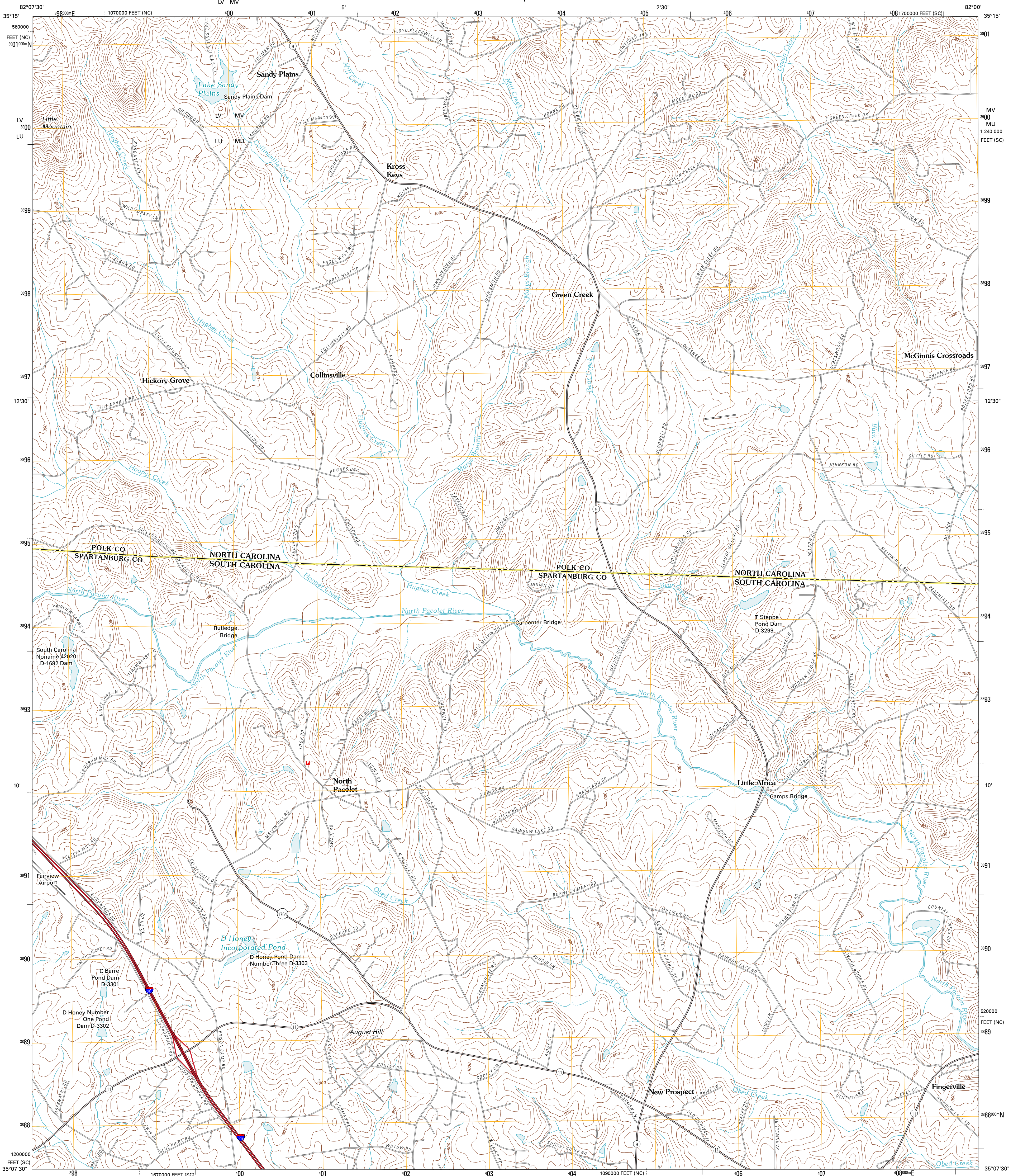




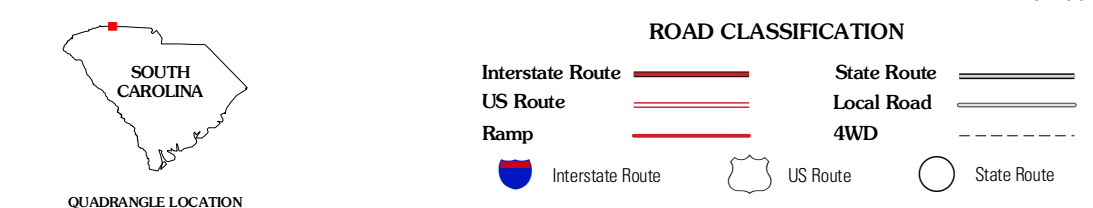
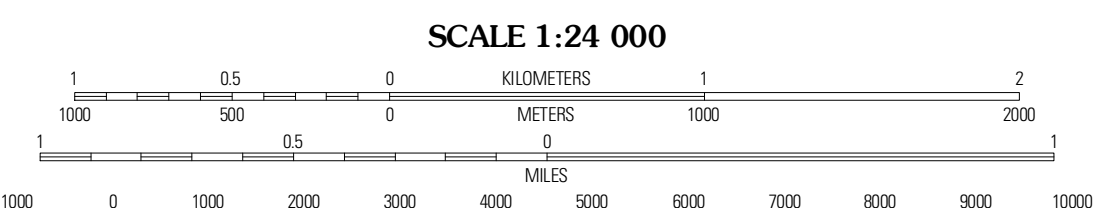
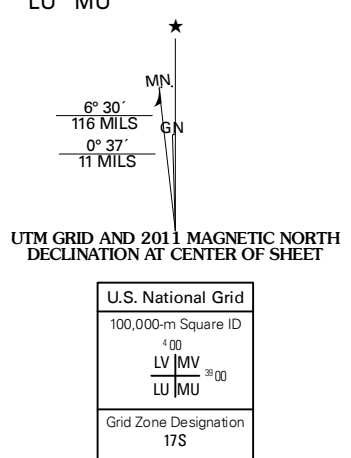
U.S. DEPARTMENT OF THE INTERIOR
U. S. GEOLOGICAL SURVEY



FINGERVILLE WEST QUADRANGLE
SOUTH CAROLINA-NORTH CAROLINA
7.5-MINUTE SERIES



Produced by the United States Geological Survey
North American Datum of 1983 (NAD83)
World Geodetic System of 1984 (WGS84). Projection and
1 000-meter grid: Universal Transverse Mercator, Zone 17S
10 000-foot ticks: South Carolina Coordinate System of
1983, North Carolina Coordinate System of 1983



Imagery: N.A.I.P., April 2009
Roads: 2006-2010 Tele Atlas
Names: GNS, 2010
Hydrography: National Hydrography Dataset, 2009
Contours: National Elevation Dataset, 2011
Boundaries: Census, IBWC, IBC, USGS, 1972-2010

U.S. National Grid
100,000-m Square ID
LV MV
LU MU
Grid Zone Designation
17S

CONTOUR INTERVAL 20 FEET
NORTH AMERICAN VERTICAL DATUM OF 1988
This map was produced to conform with version 0.5.10
of the USGS US Topo Product Standard.
A metadata file associated with this product is draft version 0.5.16

QUADRANGLE LOCATION

Mill Spring	Pea Ridge	Rutherford South
Landrum	Fingerville West	Fingerville East
Campobello	Inman	Valley Falls

ADJOINING 7.5 QUADRANGLES

FINGERVILLE WEST, SC-NC
2011