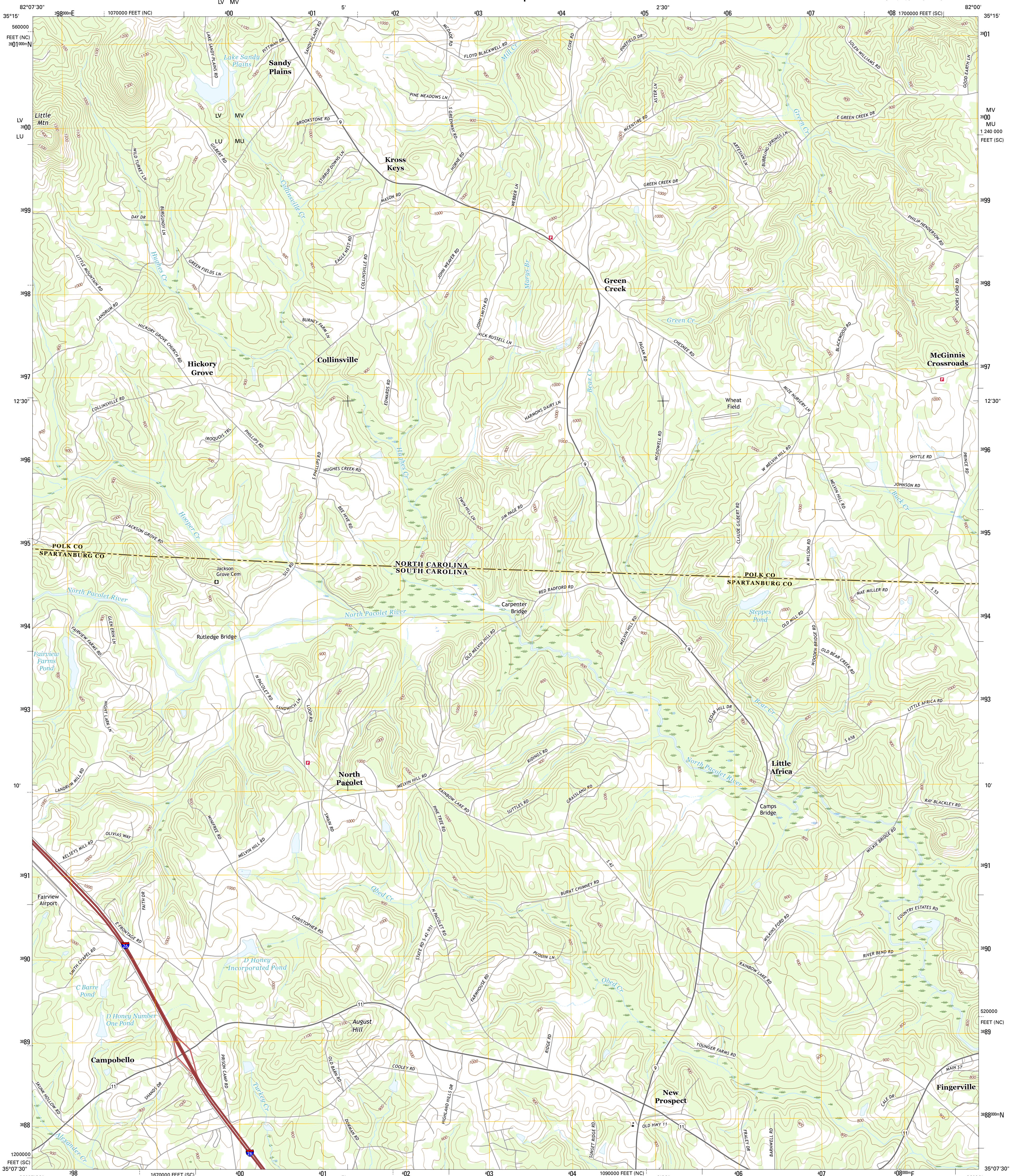




U.S. DEPARTMENT OF THE INTERIOR  
U.S. GEOLOGICAL SURVEY



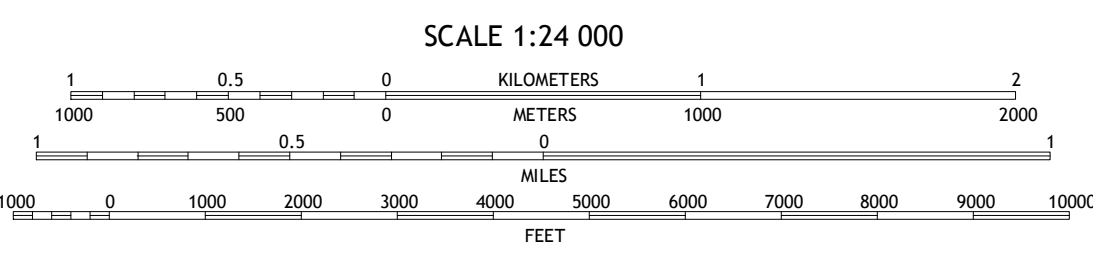
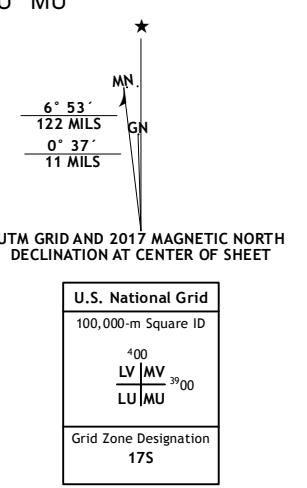
FINGERVILLE WEST QUADRANGLE  
SOUTH CAROLINA-NORTH CAROLINA  
7.5-MINUTE SERIES



Produced by the United States Geological Survey  
North American Datum of 1983 (NAD83)  
World Geodetic System of 1984 (WGS84) - Projection and  
1 000-meter grid: Universal Transverse Mercator, Zone 17S  
10 000-foot ticks: South Carolina Coordinate System of 1983,  
North Carolina Coordinate System of 1983

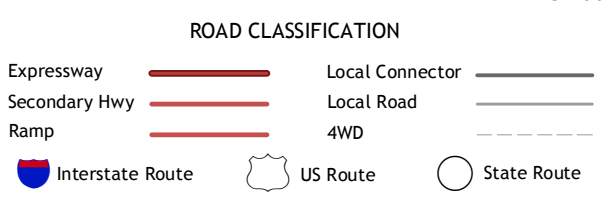
This map is not a legal document. Boundaries may be  
generalized for this map scale. Private lands within government  
reservations may not be shown. Obtain permission before  
entering private lands.

Imagery: NAIP, November 2014  
Roads: U.S. Census Bureau, 2015 - 2016  
Names: GNIS, 2016  
Hydrography: National Hydrography Dataset, 2014  
Contours: National Elevation Dataset, 2011  
Boundaries: Multiple sources; see metadata file 1972 - 2016  
Wetlands: FWS National Wetlands Inventory 1977 - 2014



CONTOUR INTERVAL 20 FEET  
NORTH AMERICAN VERTICAL DATUM OF 1988

This map was produced to conform with the  
National Geospatial Program US Topo Product Standard, 2011.  
A metadata file associated with this product is draft version 0.6.19



1	2	3	1 Mill Spring
4	5	5 Fingerville East	2 Pea Ridge
6	7	6 Campobello	3 Rutherfordton South
7	8	7 Inman	4 Landrum
		8 Valley Falls	

FINGERVILLE WEST, SC-NC  
2017



NSN 7 16 4 301 6 9 9 2 2 3 8 7  
NCA REF NO. U.S.G.S.X 2 4 K 1 5 2 8 7