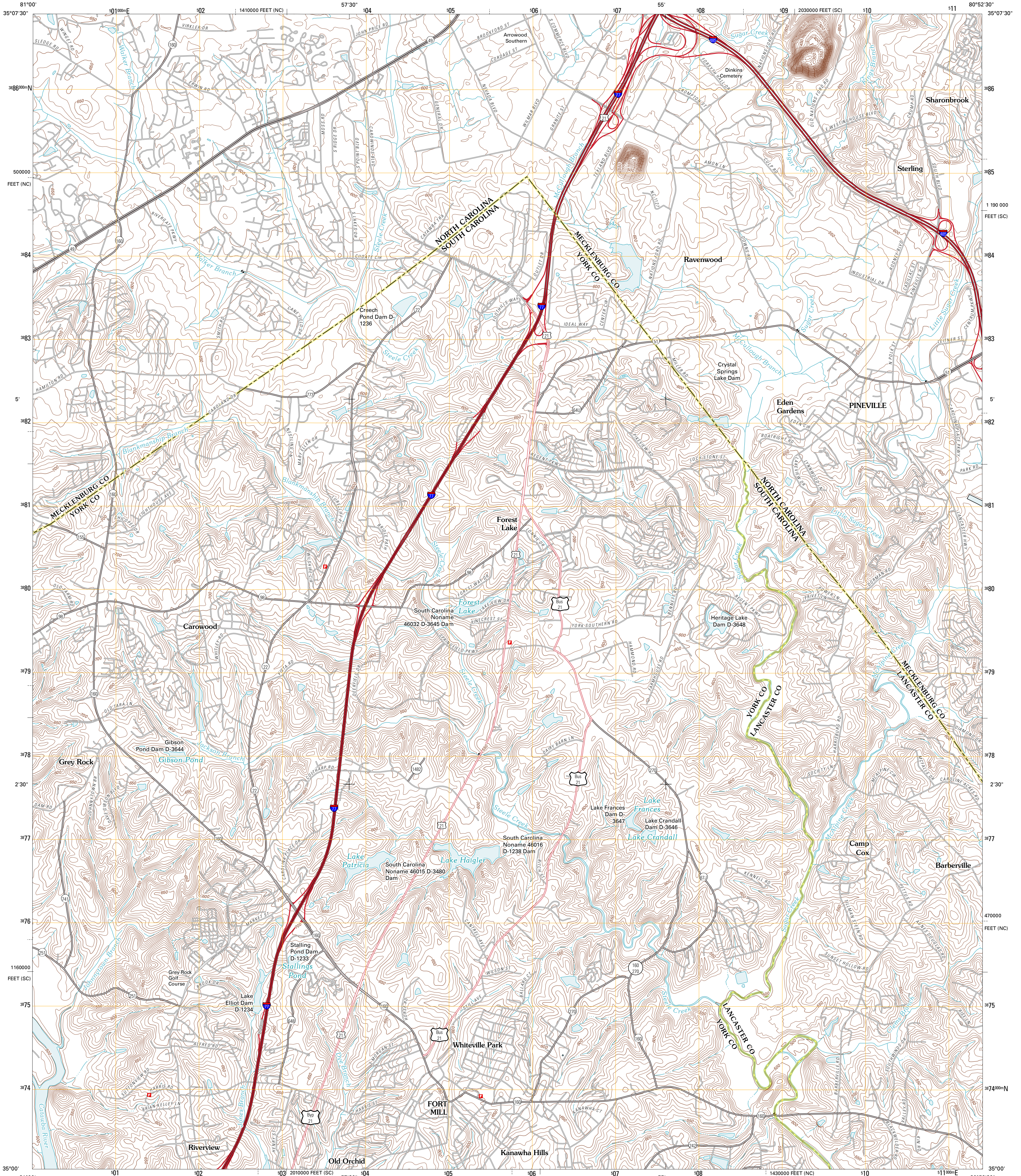




U.S. DEPARTMENT OF THE INTERIOR
U. S. GEOLOGICAL SURVEY



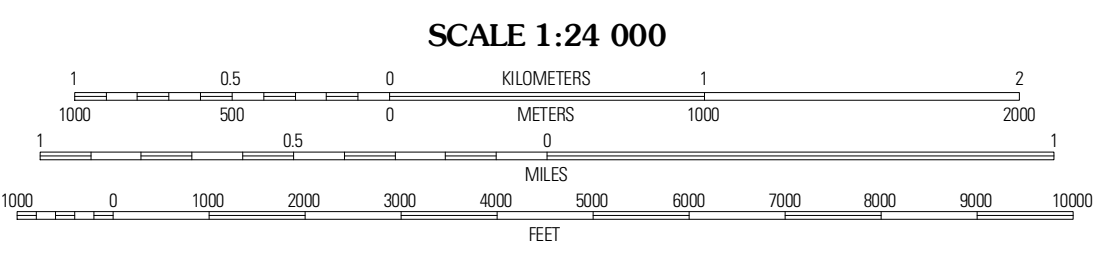
FORT MILL QUADRANGLE
SOUTH CAROLINA-NORTH CAROLINA
7.5-MINUTE SERIES



Produced by the United States Geological Survey
North American Datum of 1983 (NAD83)
World Geodetic System of 1984 (WGS84) Projection and
1 000-foot ticks: South Carolina Coordinate System of
1983, North Carolina Coordinate System of 1983

UTM GRID AND 2011 MAGNETIC NORTH
DECLINATION AT CENTER OF SHEET

U.S. National Grid
100,000-m Square ID
NU
Grid Zone Designation
17S



ROAD CLASSIFICATION

Interstate Route (thick red line)
US Route (red line)
Ramp (red line with arrow)

State Route (thin red line)
Local Road (grey line)
4WD (dashed grey line)

QUADRANGLE LOCATION

Belmont	Charlotte West	Charlotte East
Lake Wylie	Fort Mill	Weddington
Rock Hill West	Rock Hill East	Catawba NE

FORT MILL, SC-NC
2011

CONTOUR INTERVAL 10 FEET
NORTH AMERICAN VERTICAL DATUM OF 1988

This map was produced to conform with version 0.5.10
of the USGS US Topo Product Standard.
A metadata file associated with this product is draft version 0.5.16