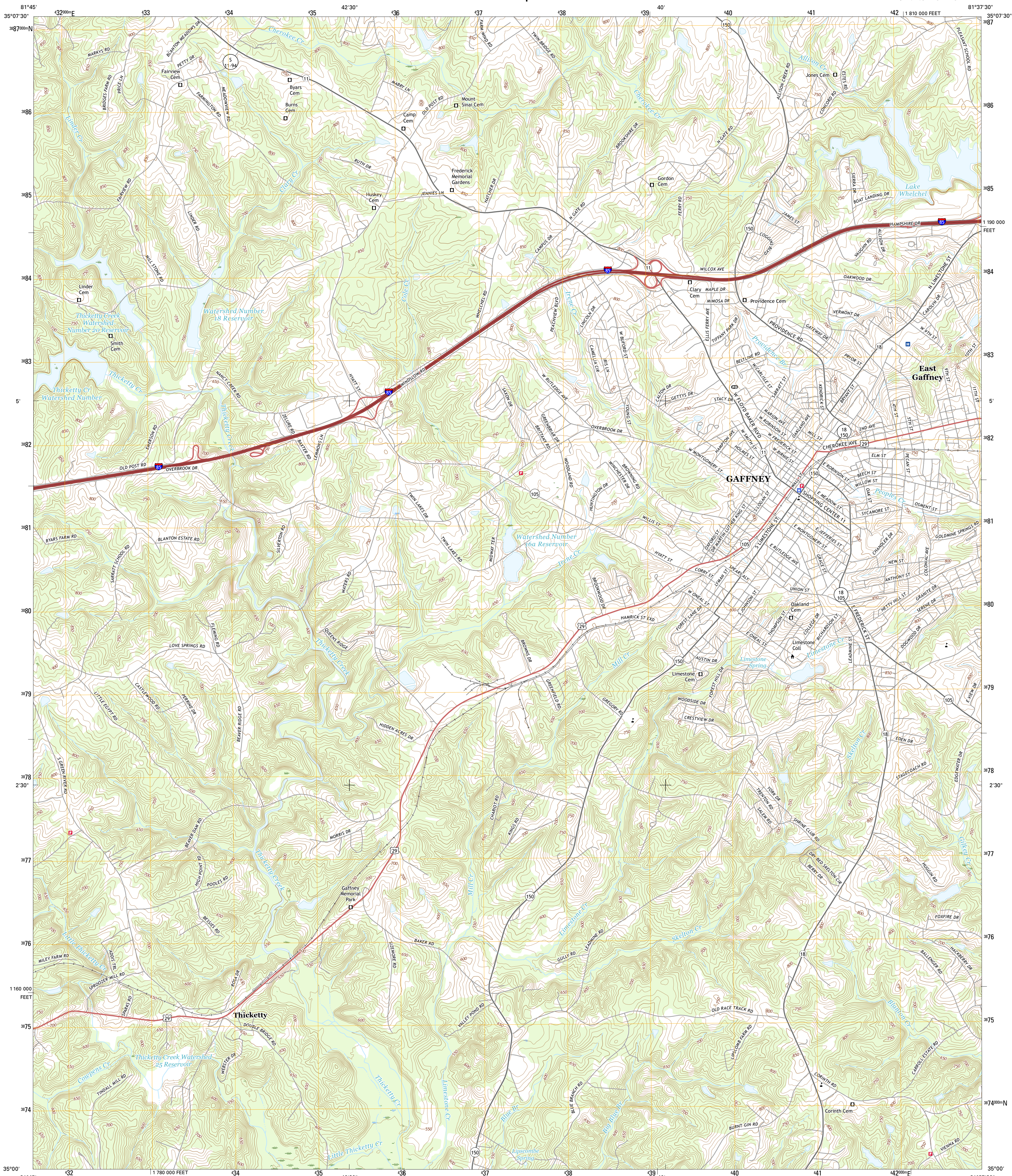




U.S. DEPARTMENT OF THE INTERIOR
U.S. GEOLOGICAL SURVEY



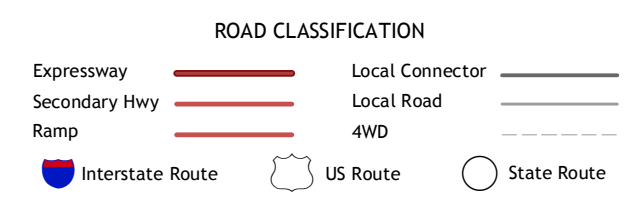
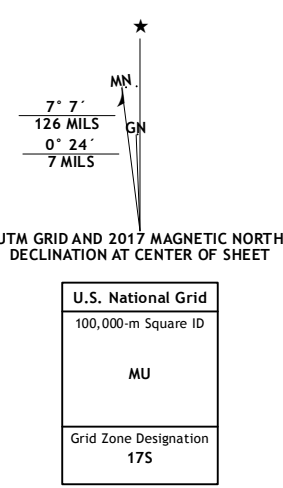
GAFFNEY QUADRANGLE
SOUTH CAROLINA-CHEROKEE CO.
7.5-MINUTE SERIES



Produced by the United States Geological Survey
North American Datum of 1983 (NAD83)
World Geodetic System of 1984 (WGS84). Projection and
1 000-meter grid: Universal Transverse Mercator, Zone 17S
10 000-foot ticks: South Carolina Coordinate System of 1983

This map is not a legal document. Boundaries may be
generalized for this map scale. Private lands within government
reservations may not be shown. Obtain permission before
entering private lands.

Imagery.....N.A.P., July 2015
Roads.....U.S. Census Bureau, 2015 - 2016
Names.....GNIS, 2016
Hydrography.....National Hydrography Dataset, 2015
Contours.....National Elevation Dataset, 2009
Boundaries.....Multiple sources; see metadata file 1972 - 2016
Wetlands.....FWS National Wetlands Inventory 1977 - 2014



1	2	3	1 Chesnee
4	5	6	2 Boiling Springs South
6	7	8	3 Blacksburg North
			4 Coppens
			5 Blacksburg South
			6 Pacolet
			7 Pacolet Mills
			8 Wilksville

ADJOINING QUADRANGLES

GAFFNEY, SC
2017



NSN 7 6 4 3 0 1 6 9 2 2 6 1
NCA REF NO. U.S.G.S.X 2 4 4 K 1 6 0 2 9