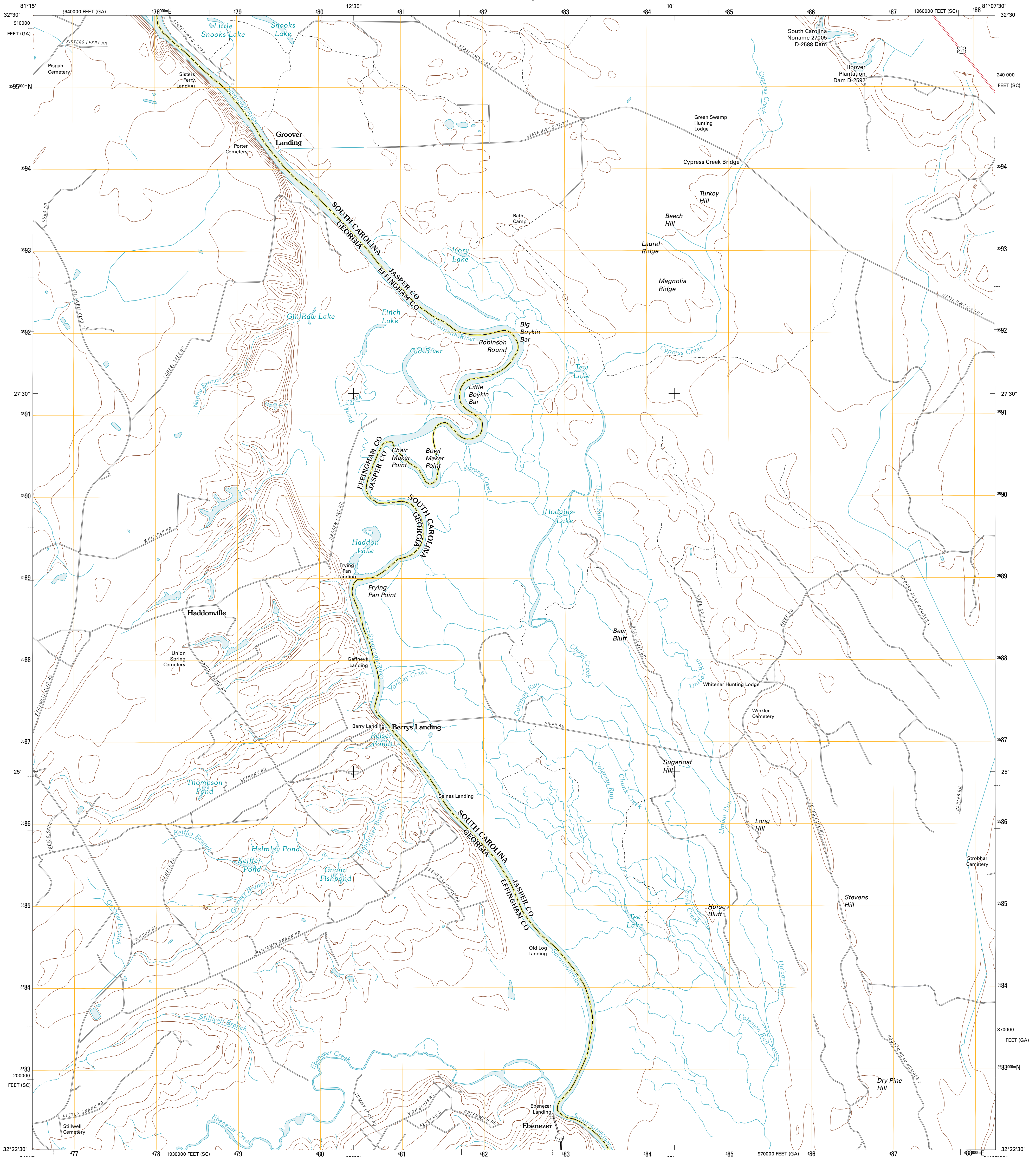




U.S. DEPARTMENT OF THE INTERIOR
U. S. GEOLOGICAL SURVEY

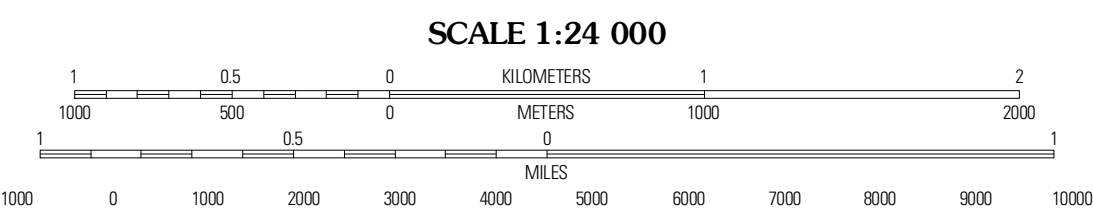
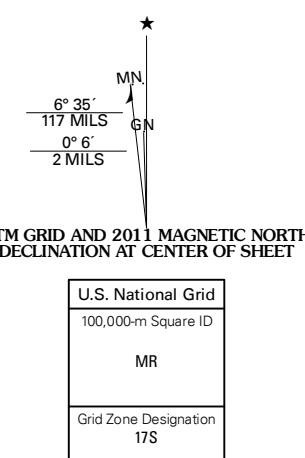


HARDEEVILLE NW QUADRANGLE
SOUTH CAROLINA-GEORGIA
7.5-MINUTE SERIES

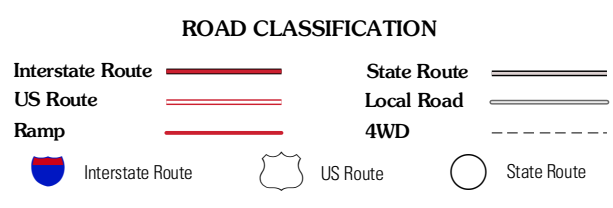


Produced by the United States Geological Survey
North American Datum of 1983 (NAD83)
World Geodetic System of 1984 (WGS84), Projection and
1 000-meter grid: Universal Transverse Mercator, Zone 17S
10 000-foot ticks: South Carolina Coordinate System of
1983, Georgia Coordinate System of 1983 (east zone)

Images: NAD, April 2009
©2006-2010 Tele Atlas
Names: GNS, 2010
Hydrography: National Hydrography Dataset, 2009
Contours: National Elevation Dataset, 2008
Boundaries: Census, IBWC, IBC, USGS, 1972-2010



SCALE 1:24 000
CONTOUR INTERVAL 10 FEET
NORTH AMERICAN VERTICAL DATUM OF 1988
This map was produced to conform with version 0.5.10
of the USGS US Topo Product Standard.
A metadata file associated with this product is draft version 0.5.16



QUADRANGLE LOCATION

Beighan	Pineclad	Calpen Bay
Springfield North	Hardeeville NW	Tillman
Springfield South	Rincon	Hardeeville

HARDEEVILLE NW, SC-GA
2011

ADJOINING 7.5 QUADRANGLES