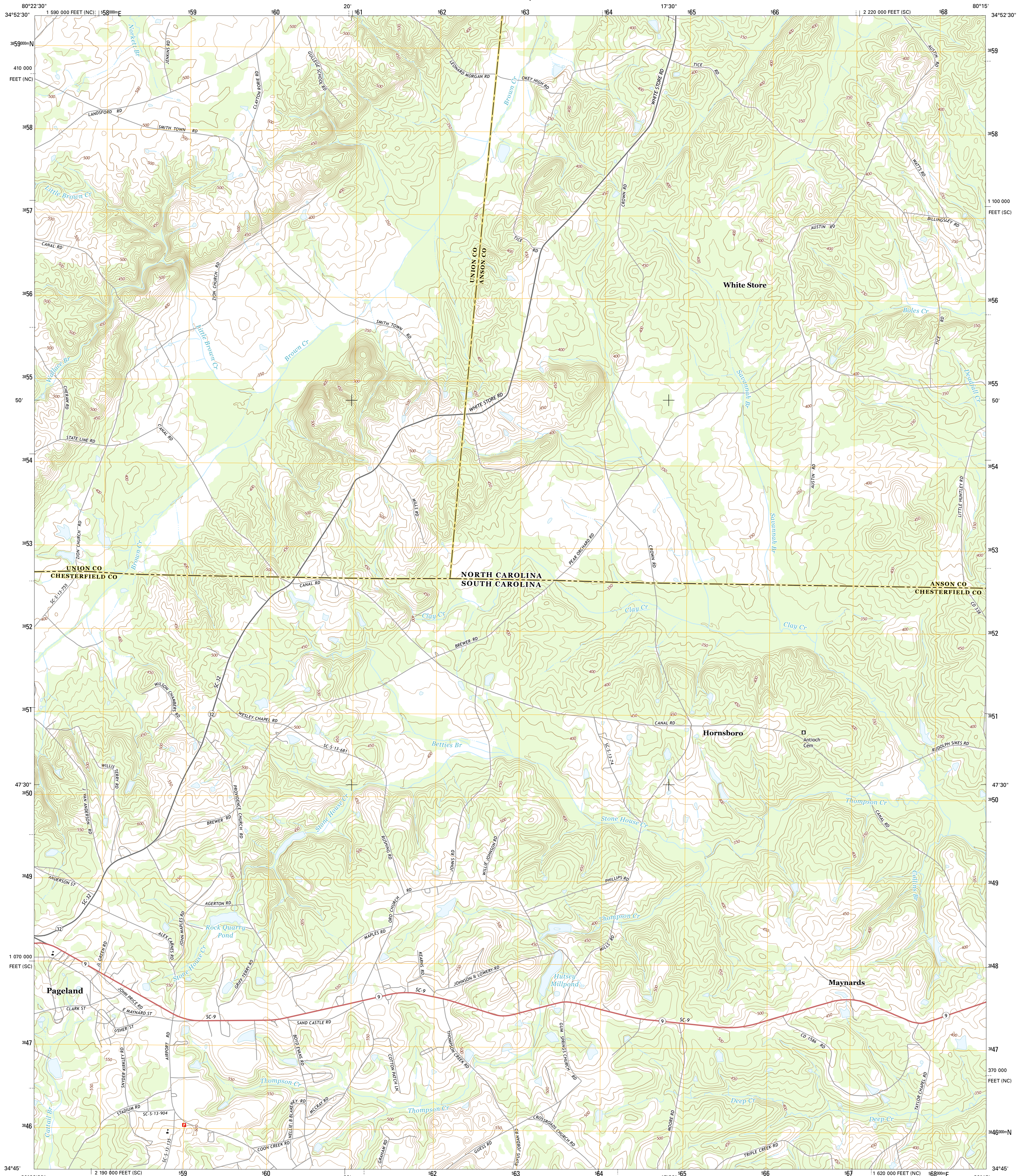




U.S. DEPARTMENT OF THE INTERIOR  
U.S. GEOLOGICAL SURVEY



HORNSBORO QUADRANGLE  
SOUTH CAROLINA-NORTH CAROLINA  
7.5-MINUTE SERIES



Produced by the United States Geological Survey  
North American Datum of 1983 (NAD83)  
World Geodetic System of 1984 (WGS84) Projection and  
1 000-meter grid: Universal Transverse Mercator, Zone 17S  
10 000-foot ticks: South Carolina Coordinate System of 1983,  
North Carolina Coordinate System of 1983

This map is not a legal document. Boundaries may be  
generalized for this map scale. Private lands within government  
reservations may not be shown. Obtain permission before  
entering private lands.

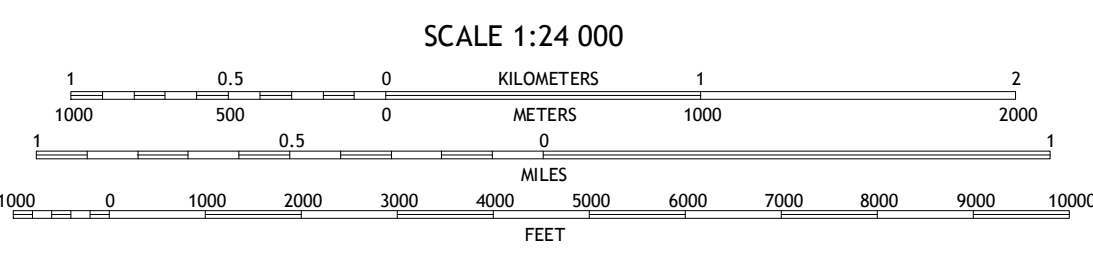
Imagery.....N.A.P., May 2011  
Roads.....HERE, ©2013  
Names.....GNIS, 2013  
Hydrography.....National Hydrography Dataset, 2011  
Contours.....National Elevation Dataset, 2009  
Boundaries.....Multiple sources; see metadata file 1972 - 2013

UTM GRID AND 2014 MAGNETIC NORTH  
DECLINATION AT CENTER OF SHEET

7° 51' 140 MILS  
0° 24' 7 MILS

U.S. National Grid  
100,000-m Square ID  
NU

Grid Zone Designation  
17S



CONTOUR INTERVAL 10 FEET  
NORTH AMERICAN VERTICAL DATUM OF 1988

This map was produced to conform with the  
National Geospatial Program US Topo Product Standard, 2011.  
A metadata file associated with this product is draft version 0.6.16



ROAD CLASSIFICATION

- Expressway
- Secondary Hwy
- Ramp
- Local Connector
- Local Road
- 4WD
- US Route
- State Route

1	2	3
4	5	6
7	8	

ADJOINING QUADRANGLES

- 1 Wingate
- 2 Marshville
- 3 Russellville
- 4 Pageland
- 5 Mount Croghan
- 6 Jefferson
- 7 Jefferson NE
- 8 Ruby

HORNSBORO, SC-NC  
2014



NSA REF NO. U.S.G.S.X.2.4.K.2.1.0.7