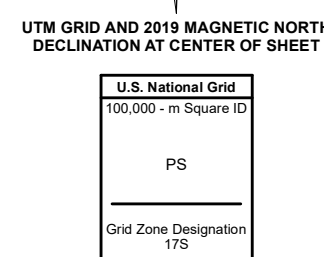
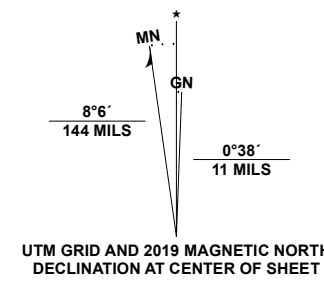


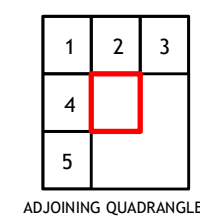
Produced by the United States Geological Survey

North American Datum of 1983 (NAD83), Projection and 1 000-meter grid; Universal Transverse Mercator, Zone 17S. This map is not a legal document. Boundaries may be generalized for this map scale. Private lands within government reservations may not be shown. Obtain permission before entering private lands.

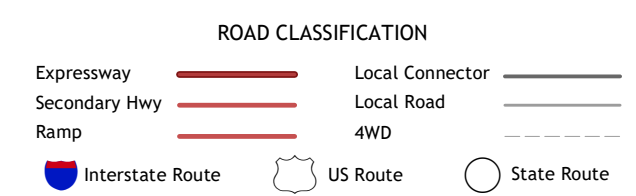
Imagery: N.A.I.P., September 2017 - December 2017
Roads: U.S. Census Bureau, Not Available
Names: GNS, 1980 - 2020
Hydrography: National Hydrography Dataset, 2003 - 2018
Contours: National Elevation Dataset, 2019
Boundaries: Multiple sources; see metadata file 2018 - 2019
Wetlands: FWS National Wetlands Inventory 2011



CONTOUR INTERVAL 10 FEET NORTH AMERICAN VERTICAL DATUM OF 1988. This map was produced to conform with the National Geospatial Program US Topo Product Standard, 2011. A metadata file associated with this product is draft version 0.6.18



- 1 Charleston
- 2 Fort Moultrie
- 3 Capers Inlet
- 4 James Island
- 5 Klawah Island OE E



JAMES ISLAND OE E, SC

2020

