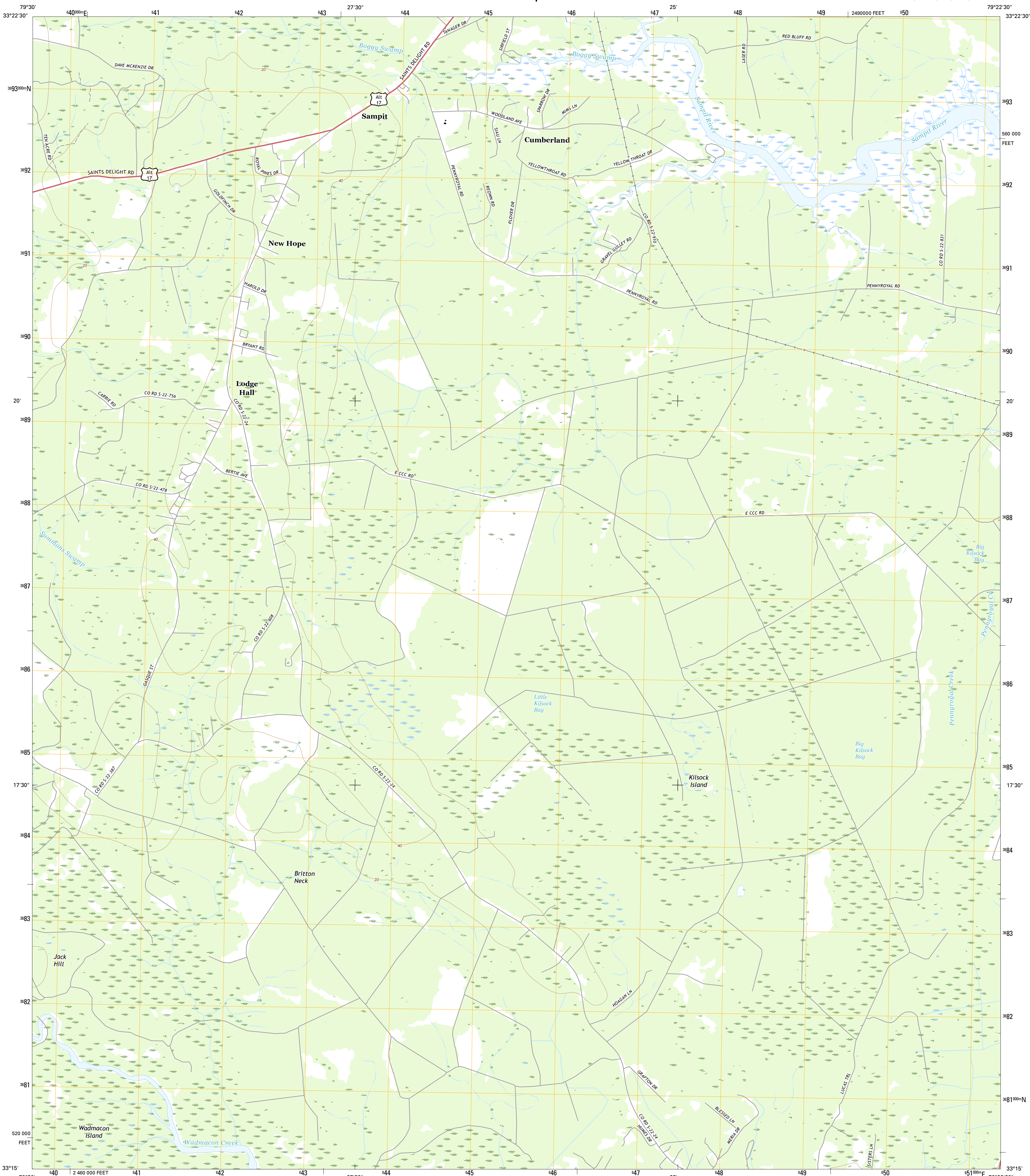




U.S. DEPARTMENT OF THE INTERIOR
U.S. GEOLOGICAL SURVEY



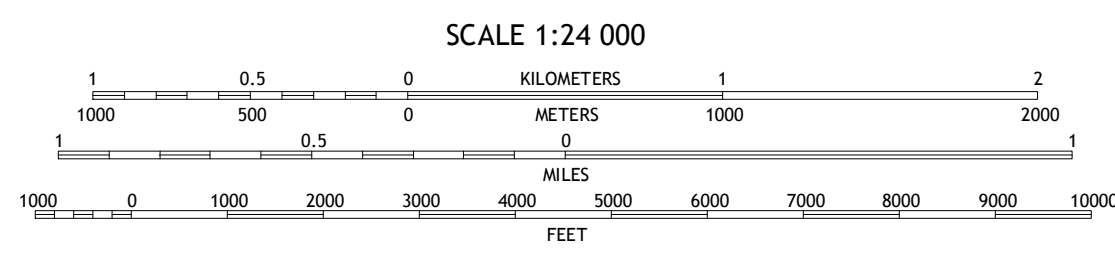
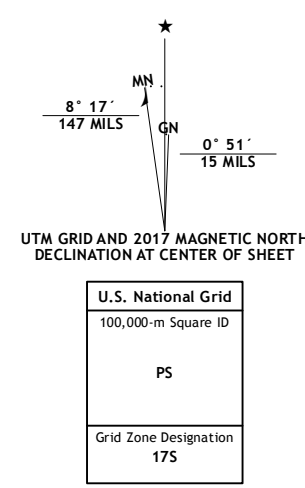
KILSOCK ISLAND QUADRANGLE
SOUTH CAROLINA-GEORGETOWN CO.
7.5-MINUTE SERIES



Produced by the United States Geological Survey
North American Datum of 1983 (NAD83)
World Geodetic System of 1984 (WGS84). Projection and 1 000-meter grid: Universal Transverse Mercator, Zone 17S
10 000-foot ticks: South Carolina Coordinate System of 1983

This map is not a legal document. Boundaries may be generalized for this map scale. Private lands within government reservations may not be shown. Obtain permission before entering private lands.

Imagery:.....NAIP, July 2015
Roads:.....U.S. Census Bureau, 2015 - 2016
Names:.....GNIS, 2016
Hydrography:.....National Hydrography Dataset, 2015
Contours:.....National Elevation Dataset, 2011
Boundaries:.....Multiple sources; see metadata file 1972 - 2016
Wetlands:.....FWS National Wetlands Inventory 1977 - 2014



CONTOUR INTERVAL 20 FEET
NORTH AMERICAN VERTICAL DATUM OF 1988

This map was produced to conform with the National Geospatial Program US Topo Product Standard, 2011. A metadata file associated with this product is draft version 0.6.19



ROAD CLASSIFICATION

Expressway	Local Connector
Secondary Hwy	Local Road
Ramp	4WD
Interstate Route	US Route
	State Route

ADJOINING QUADRANGLES

1	2	3
4	5	6
7	8	

1 Andrews
2 Olin
3 Georgetown North
4 Cedar Creek
5 Georgetown South
6 Honey Hill
7 South Santee
8 Minim Island

KILSOCK ISLAND, SC
2017



NSN 7540-01-000-0000
USGS REF NO. USGS X 2 4 2 3 5 4 4