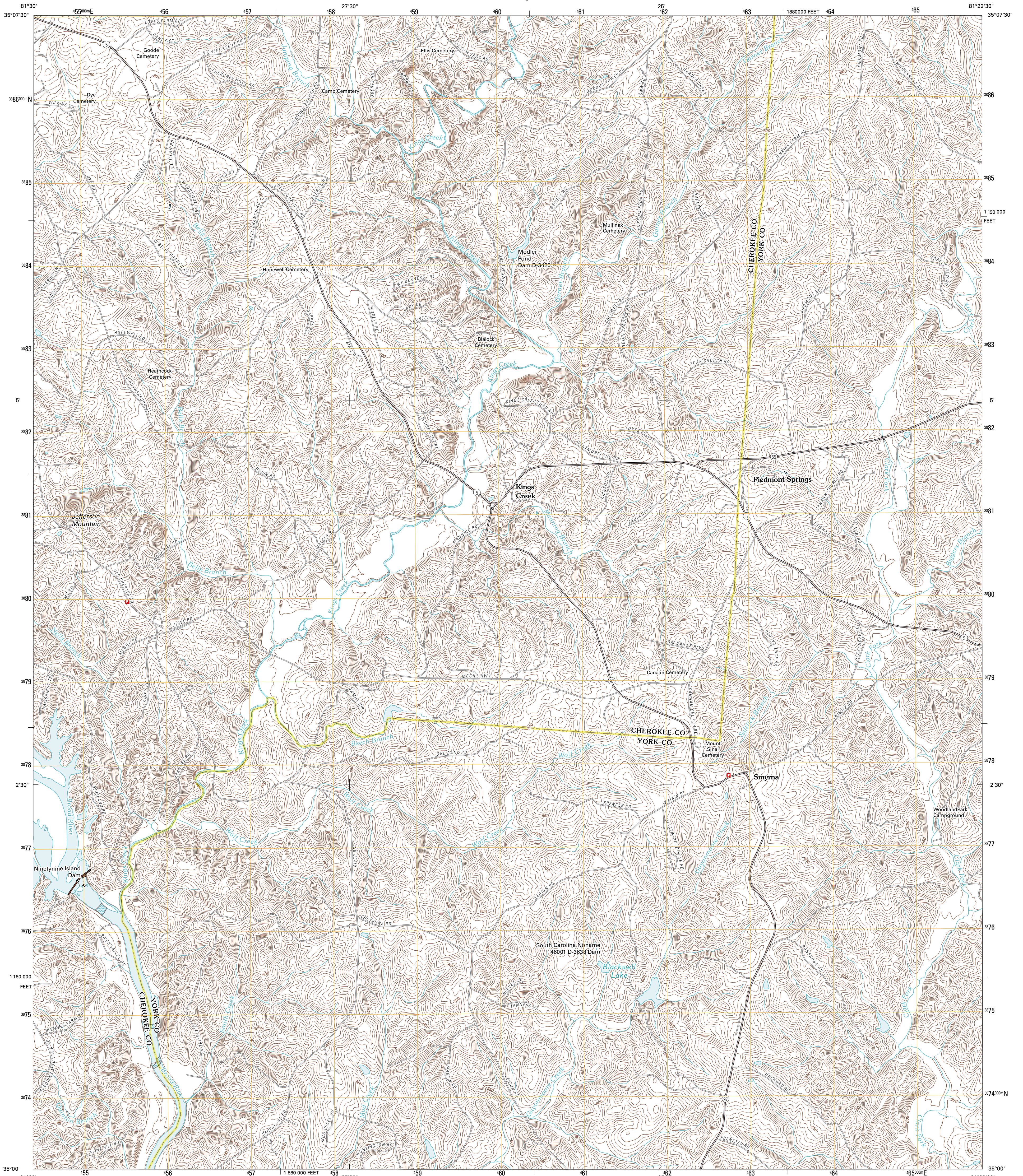




U.S. DEPARTMENT OF THE INTERIOR  
U. S. GEOLOGICAL SURVEY



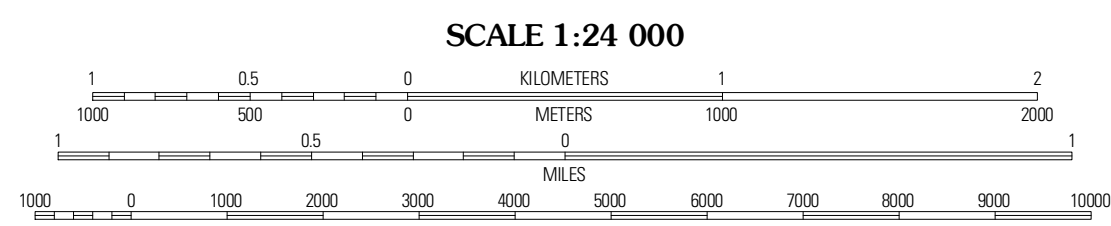
KINGS CREEK QUADRANGLE  
SOUTH CAROLINA  
7.5-MINUTE SERIES



Produced by the United States Geological Survey  
North American Datum of 1983 (NAD83)  
World Geodetic System of 1984 (WGS84). Projection and  
1 000-meter grid: Universal Transverse Mercator, Zone 17S  
10 000-foot ticks: South Carolina Coordinate System of 1983

UTM GRID AND 2011 MAGNETIC NORTH  
DECLINATION AT CENTER OF SHEET

6° 56' MN  
123 MILES  
7° 15' GN  
4 MILES



SCALE 1:24 000  
CONTOUR INTERVAL 10 FEET  
NORTH AMERICAN VERTICAL DATUM OF 1988  
This map was produced to conform with version 0.5.10  
of the USGS US Topo Product Standard.  
A metadata file associated with this product is draft version 0.5.16



ROAD CLASSIFICATION

Interstate Route  
US Route  
Ramp

State Route  
Local Road  
4WD

QUADRANGLE LOCATION

Blacksburg North	Grover	Kings Mountain
Blacksburg South	Kings Creek	Filbert
Wilkesville	Hickory Grove	Sharon

ADJOINING 7.5 QUADRANGLES

KINGS CREEK, SC  
2011

Imagery: N/AIP, April 2009  
Roads: 2006-2010 Tele Atlas  
Names: GNS, 2010  
Hydrography: National Hydrography Dataset, 2009  
Contours: National Elevation Dataset, 2009  
Boundaries: Census, IBWC, IBC, USGS, 1972-2010

U.S. National Grid
100,000-m Square ID
MU
Grid Zone Designation
17S