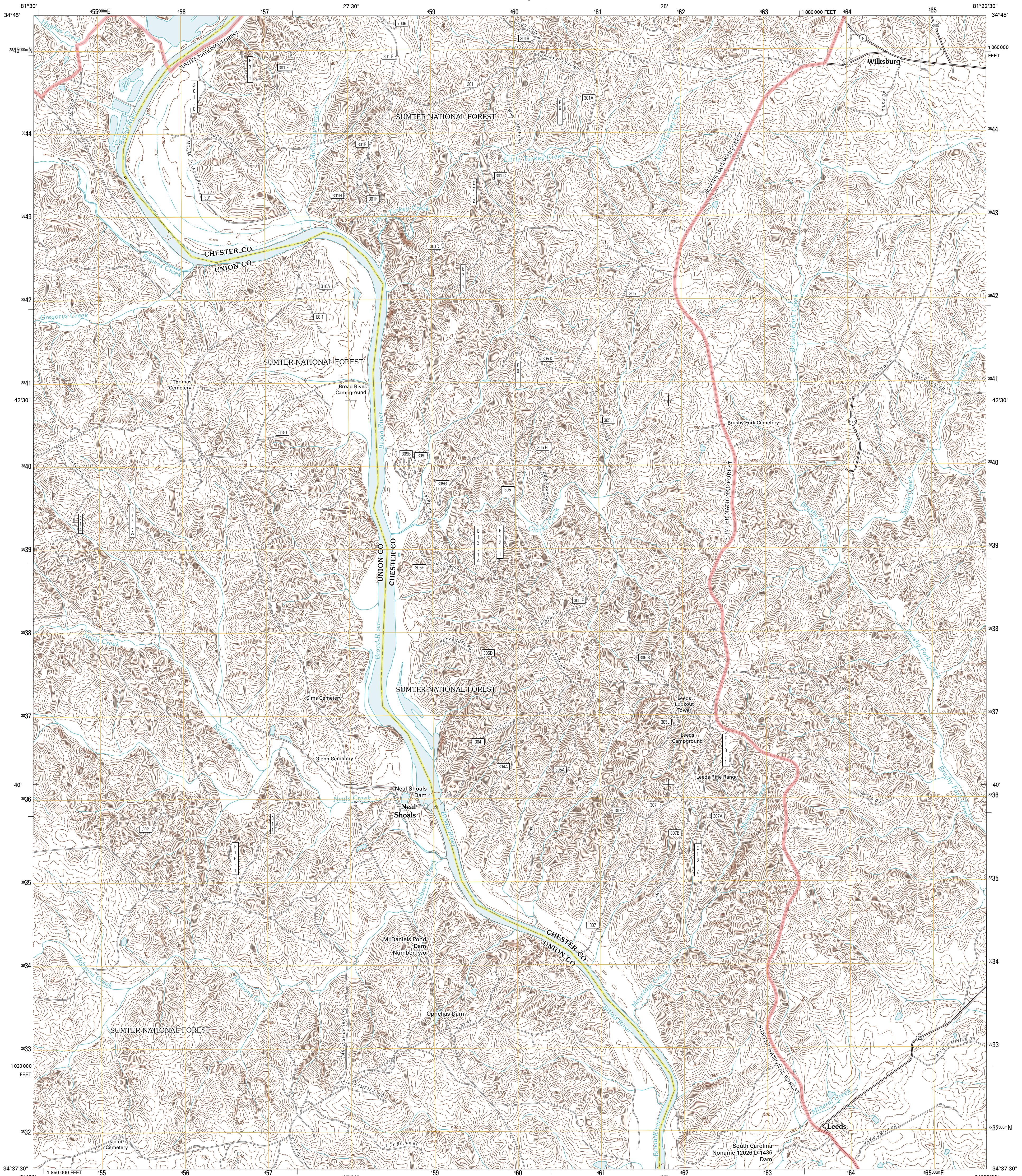




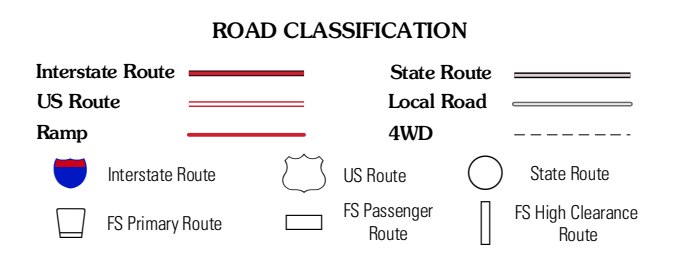
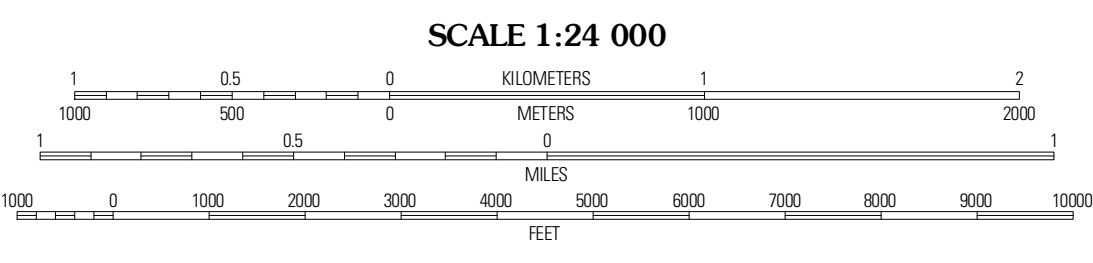
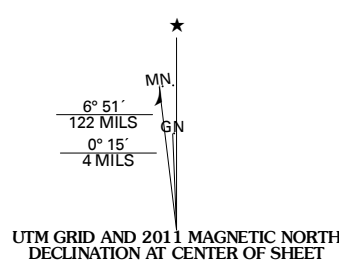
U.S. DEPARTMENT OF THE INTERIOR
U. S. GEOLOGICAL SURVEY



LEEDS QUADRANGLE
SOUTH CAROLINA
7.5-MINUTE SERIES



Produced by the United States Geological Survey
North American Datum of 1983 (NAD83)
World Geodetic System of 1984 (WGS84), Projection and
1 000-foot grid: Universal Transverse Mercator, Zone 17S
10 000-foot ticks: South Carolina Coordinate System of 1983



QUADRANGLE LOCATION

Kelton	Lockhart	Amenia
Union East	Leeds	Baton Rouge
Whitmore North	Carlisle	Carlisle SE

ADJOINING 7.5 QUADRANGLES

Imagery:.....NAP, April 2009
Roads:.....©2006-2010 Tele Atlas
Roads within US Forest Service Lands:.....FS Topo Data with limited Forest Service updates, 2009
Names:.....GNIS, 2010
Hydrography:.....National Hydrography Dataset, 2009
Contours:.....National Elevation Dataset, 2009
Boundaries:.....Census, BIVC, IBC, USGS, 1972 - 2010

U.S. National Grid

100,000m Square ID
MU
Grid Zone Designation
17S

CONTOUR INTERVAL 10 FEET
NORTH AMERICAN VERTICAL DATUM OF 1988

This map was produced to conform with version 0.5.10 of the USGS US Topo Product Standard.
A metadata file associated with this product is draft version 0.5.16

LEEDS, SC
2011