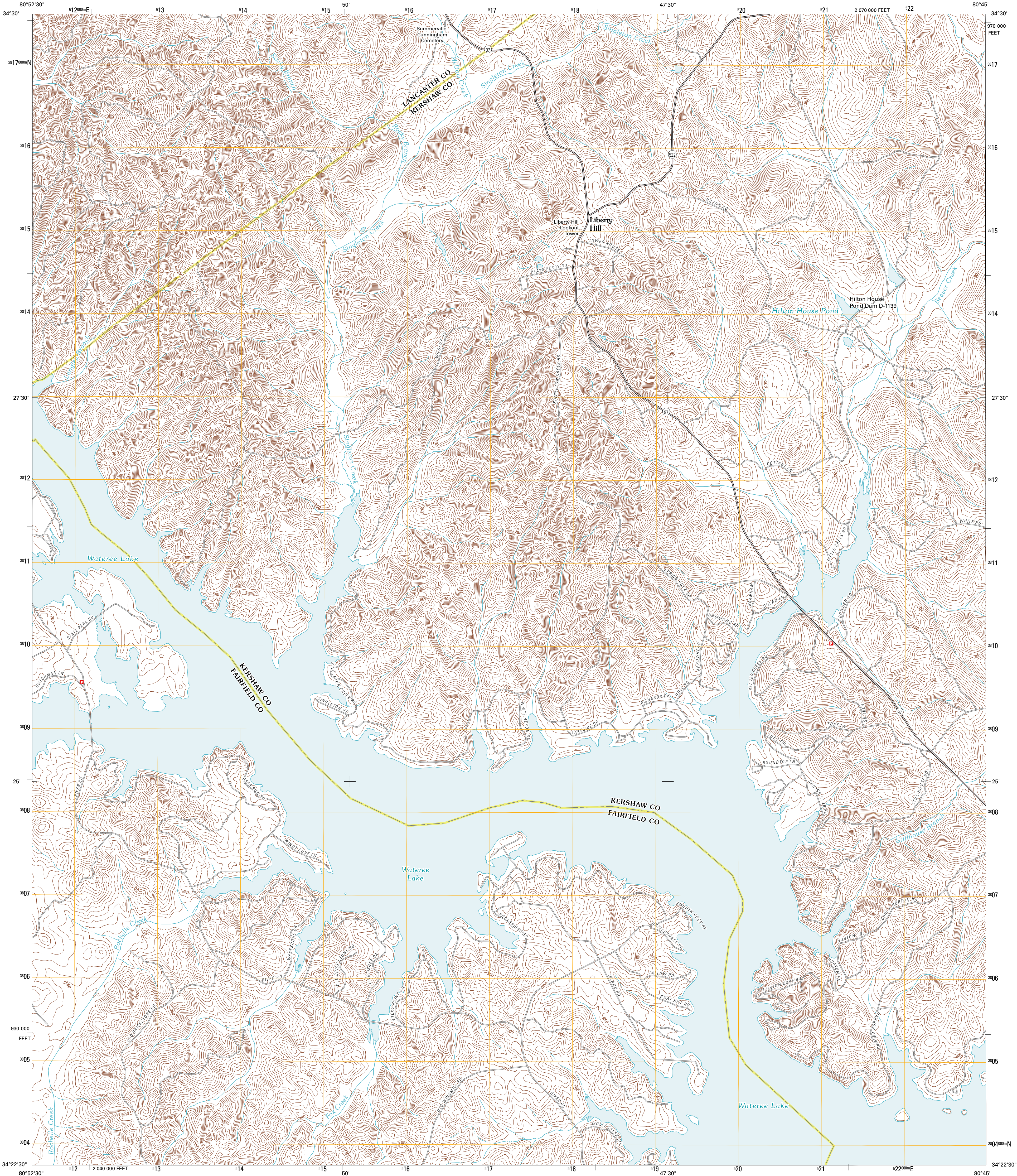




U.S. DEPARTMENT OF THE INTERIOR  
U. S. GEOLOGICAL SURVEY

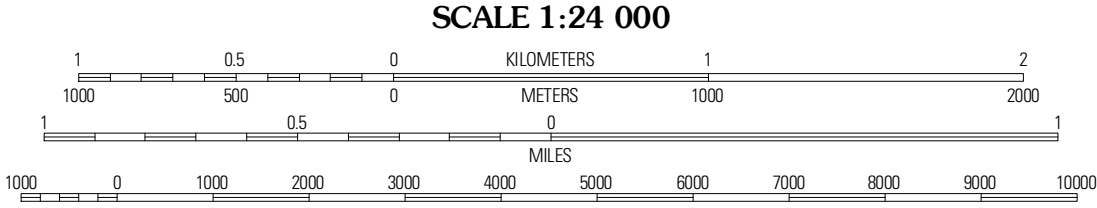
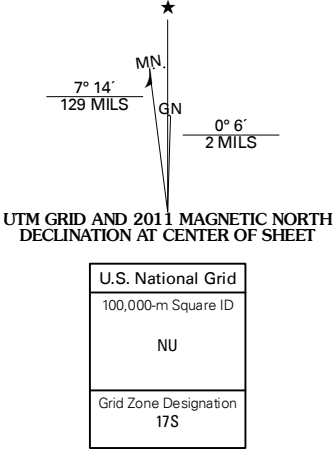


LIBERTY HILL QUADRANGLE  
SOUTH CAROLINA  
7.5-MINUTE SERIES



Produced by the United States Geological Survey  
North American Datum of 1983 (NAD83)  
World Geodetic System of 1984 (WGS84). Projection and  
1 000-meter grid: Universal Transverse Mercator, Zone 17S  
10 000-foot ticks: South Carolina Coordinate System of 1983

Imagery.....NAIP, April 2009  
Roads.....©2006-2010 Tele Atlas  
Names.....GNIS, 2010  
Hydrography.....National Hydrography Dataset, 2009  
Contours.....National Elevation Dataset, 2009  
Boundaries.....Census, IBWC, IBC, USGS, 1972 - 2010

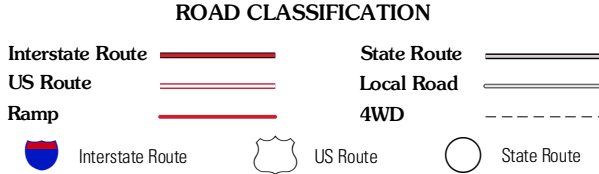


CONTOUR INTERVAL 10 FEET  
NORTH AMERICAN VERTICAL DATUM OF 1988  
This map was produced to conform with version 0.5.10  
of the USGS US Topo Product Standard.  
A metadata file associated with this product is draft version 0.5.16



QUADRANGLE LOCATION		
Great Falls	Lancaster SE	Heath Springs
Flint Hill	Liberty Hill	White Oak Creek
Ridgeway	Longtown	Rabon Crossroads

ADJOINING 7.5 QUADRANGLES



LIBERTY HILL, SC  
2011