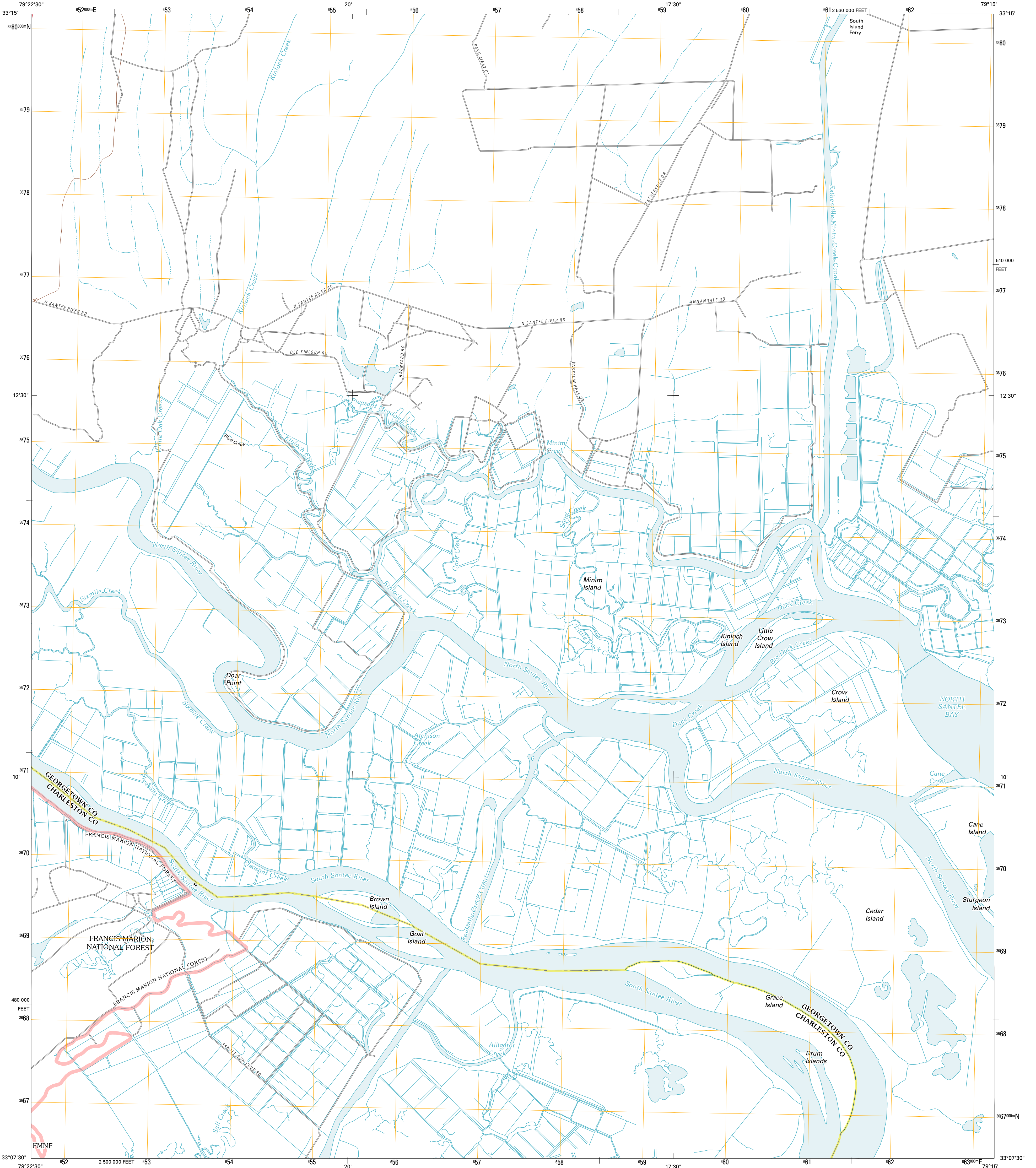




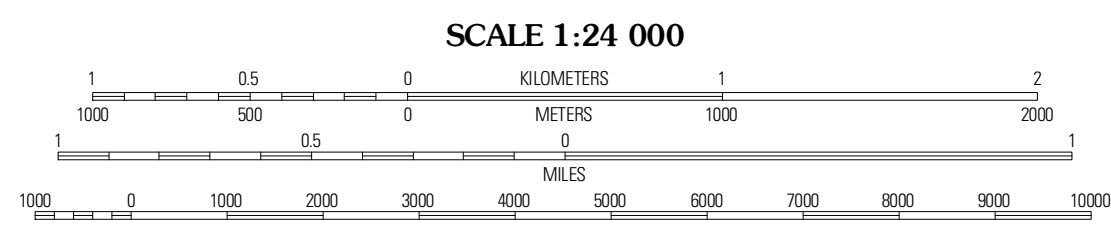
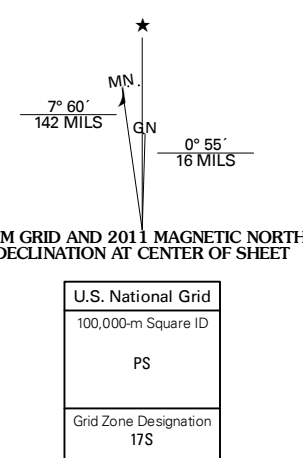
U.S. DEPARTMENT OF THE INTERIOR
U. S. GEOLOGICAL SURVEY



MINIM ISLAND QUADRANGLE
SOUTH CAROLINA
7.5-MINUTE SERIES



Produced by the United States Geological Survey
North American Datum of 1983 (NAD83)
World Geodetic System of 1984 (WGS84). Projection and
1 000-meter grid: Universal Transverse Mercator, Zone 17S
10 000-foot ticks: South Carolina Coordinate System of 1983



CONTOUR INTERVAL 20 FEET
NORTH AMERICAN VERTICAL DATUM OF 1988
This map was produced to conform with version 0.5.10
of the USGS US Topo Product Standard.
A metadata file associated with this product is draft version 0.5.16



QUADRANGLE LOCATION

Kiloback Island	Georgetown South	North Island
South Santee	Minim Island	Santee Point
McCallanville	Cape Romain	Cape Romain O.E.E.

ADJOINING 7.5 QUADRANGLES

ROAD CLASSIFICATION

- Interstate Route (thick red line)
- US Route (red line)
- Ramp (red line with blue triangle)
- State Route (thin red line)
- Local Road (black line)
- 4WD (dashed black line)
- FS Route (black line with circle)
- FS Passenger Route (black line with square)
- FS High Clearance Route (black line with vertical bar)

Check with local Forest Service unit for current travel conditions and restrictions.

Imagery: N.A.P. April 2009
Roads: ©2006-2010 Tele Atlas
Roads within US Forest Service Lands: FSTopo Data with limited Forest Service updates, 2009
Names: GNS, 2010
Hydrography: National Hydrography Dataset, 2009
Contours: National Elevation Dataset, 2011
Boundaries: Census, IBWC, IBC, USGS, 1972 - 2010

MINIM ISLAND, SC
2011