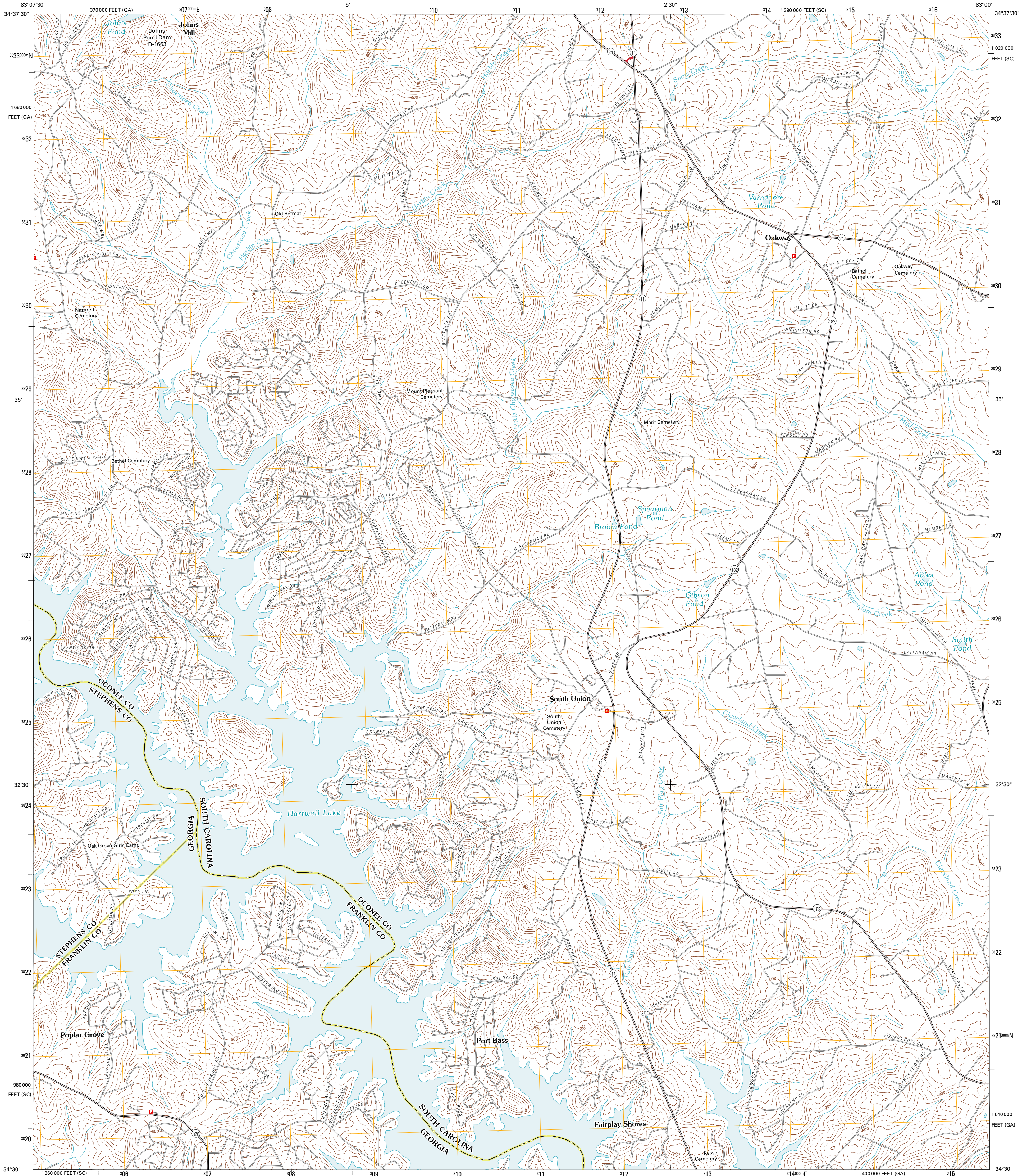




U.S. DEPARTMENT OF THE INTERIOR
U. S. GEOLOGICAL SURVEY

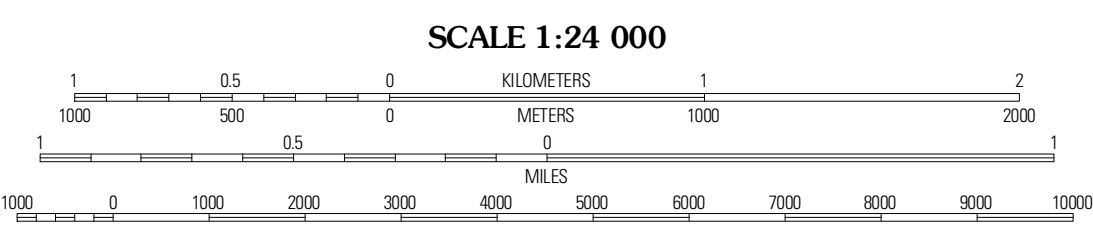
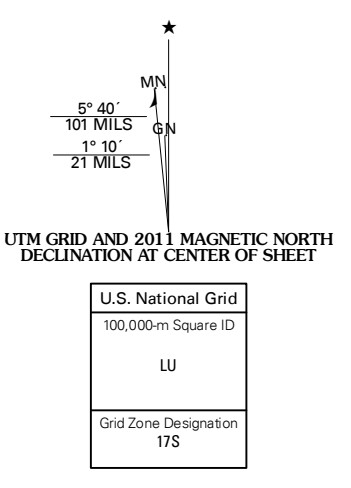


OAKWAY QUADRANGLE
SOUTH CAROLINA-GEORGIA
7.5-MINUTE SERIES



Produced by the United States Geological Survey
North American Datum of 1983 (NAD83)
World Geodetic System of 1984 (WGS84). Projection and
1 000-foot grid: Universal Transverse Mercator, Zone 17S
10 000-foot ticks: South Carolina Coordinate System of
1983, Georgia Coordinate System of 1983 (east zone)

Imagery.....NAIP, April 2009
Roads.....©2006-2010 Tele Atlas
Names.....GNIS, 2010
Hydrography.....National Hydrography Dataset, 2009
Contours.....National Elevation Dataset, 2011
Boundaries.....Census, BWC, IBC, USCS, 1972 - 2010



CONTOUR INTERVAL 20 FEET
NORTH AMERICAN VERTICAL DATUM OF 1988

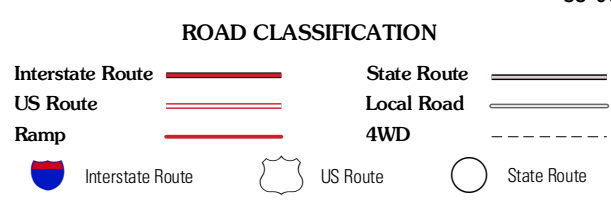
This map was produced to conform with version 0.5.10
of the USGS US Topo Product Standard.
A metadata file associated with this product is draft version 0.5.16



QUADRANGLE LOCATION

Holly Springs	Westminster	Seneca
Awaken	Oakway	Fair Play
Martin	Lavonia	Reed Creek

ADJOINING 7.5 QUADRANGLES



OAKWAY, SC-GA
2011