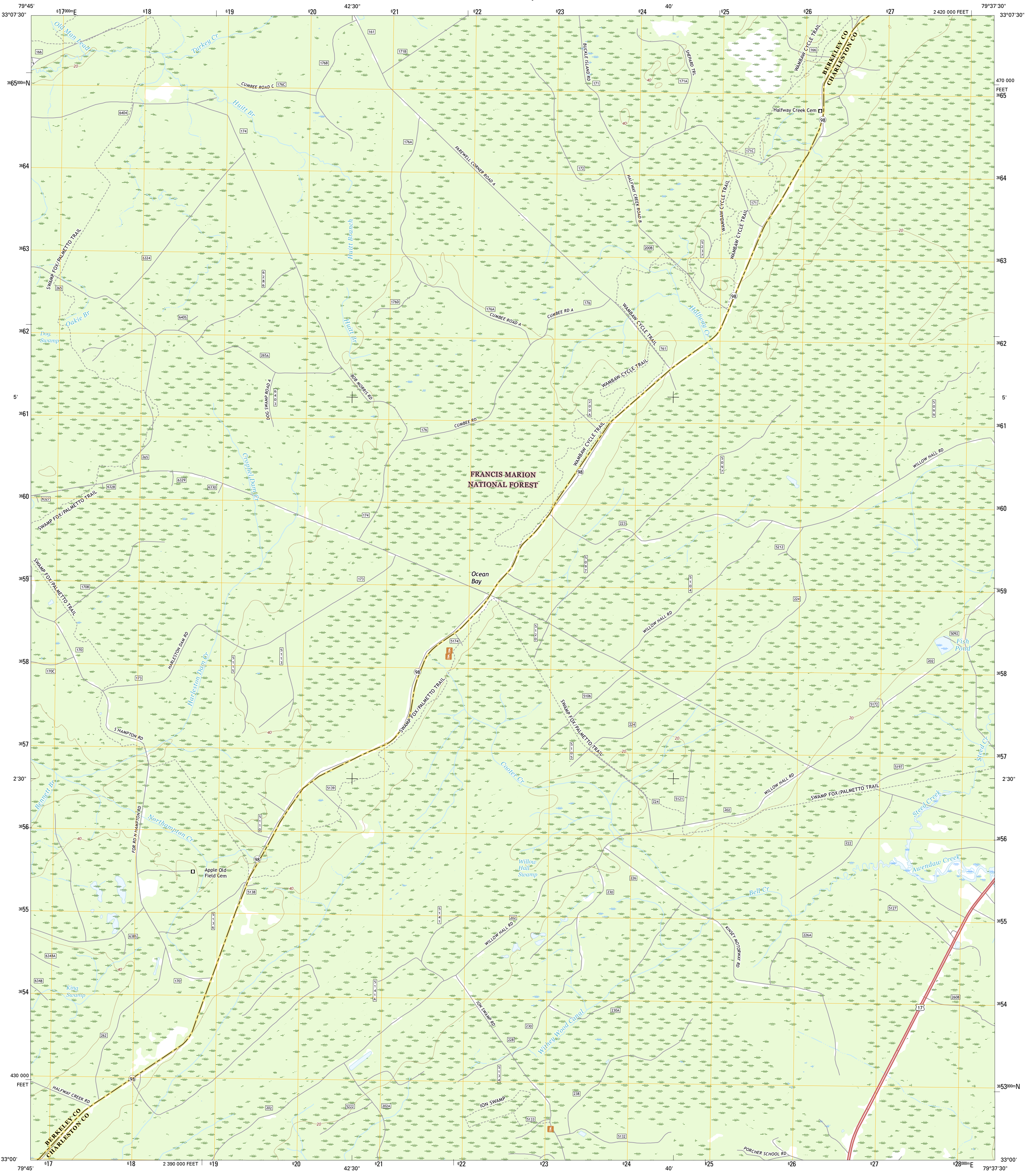




U.S. DEPARTMENT OF THE INTERIOR
U.S. GEOLOGICAL SURVEY



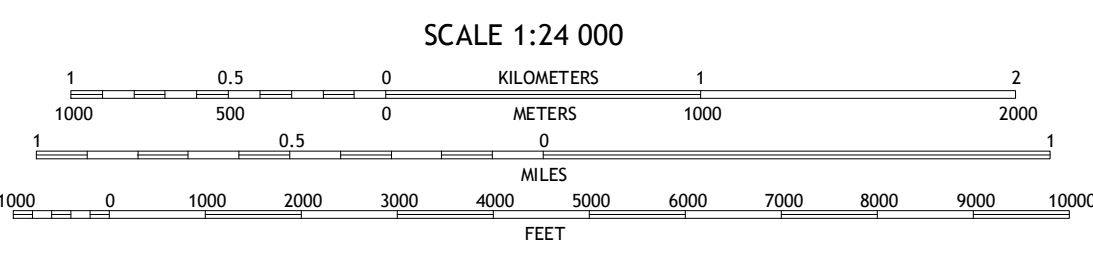
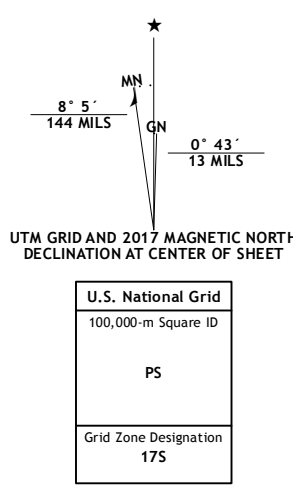
OCEAN BAY QUADRANGLE
SOUTH CAROLINA
7.5-MINUTE SERIES



Produced by the United States Geological Survey
North American Datum of 1983 (NAD83)
World Geodetic System of 1984 (WGS84). Projection and
1 000-meter grid: Universal Transverse Mercator, Zone 17S
10 000-foot ticks: South Carolina Coordinate System of 1983

This map is not a legal document. Boundaries may be
generalized for this map scale. Private lands within government
reservations may not be shown. Obtain permission before
entering private lands.

Imagery.....NAIP July 2015
Roads.....U.S. Census Bureau, 2015 - 2016
Roads within US Forest Service Lands.....FS Topo
Data with limited Forest Service updates, 2012 - 2016
Names.....GNIS, 2016
Hydrography.....National Hydrography Dataset, 2015
Contours.....National Elevation Dataset, 2012
Boundaries.....Multiple sources; see metadata file 1972 - 2016
Wetlands.....FWS National Wetlands Inventory 1977 - 2014



CONTOUR INTERVAL 20 FEET
NORTH AMERICAN VERTICAL DATUM OF 1988

This map was produced to conform with the
National Geospatial Program US Topo Product Standard, 2011.
A metadata file associated with this product is draft version 0.6.19



QUADRANGLE LOCATION

ROAD CLASSIFICATION

Expressway	Local Connector
Secondary Hwy	Local Road
Ramp	4WD
Interstate Route	US Route
FS Primary Route	FS Passenger Route
	FS High Clearance Route

Check with local Forest Service unit for current travel conditions and restrictions.

1	2	3	1 Bethera
4	5	6	2 Shulerville
7	8	9	3 Honey Hill
			4 Hugler
			5 Awendaw
			6 Calhoun
			7 Sewee Bay
			8 Bull Island

ADJOINING QUADRANGLES

OCEAN BAY, SC
2017



NGA REF NO. U.S. G.S. X-24 X 2 8 2