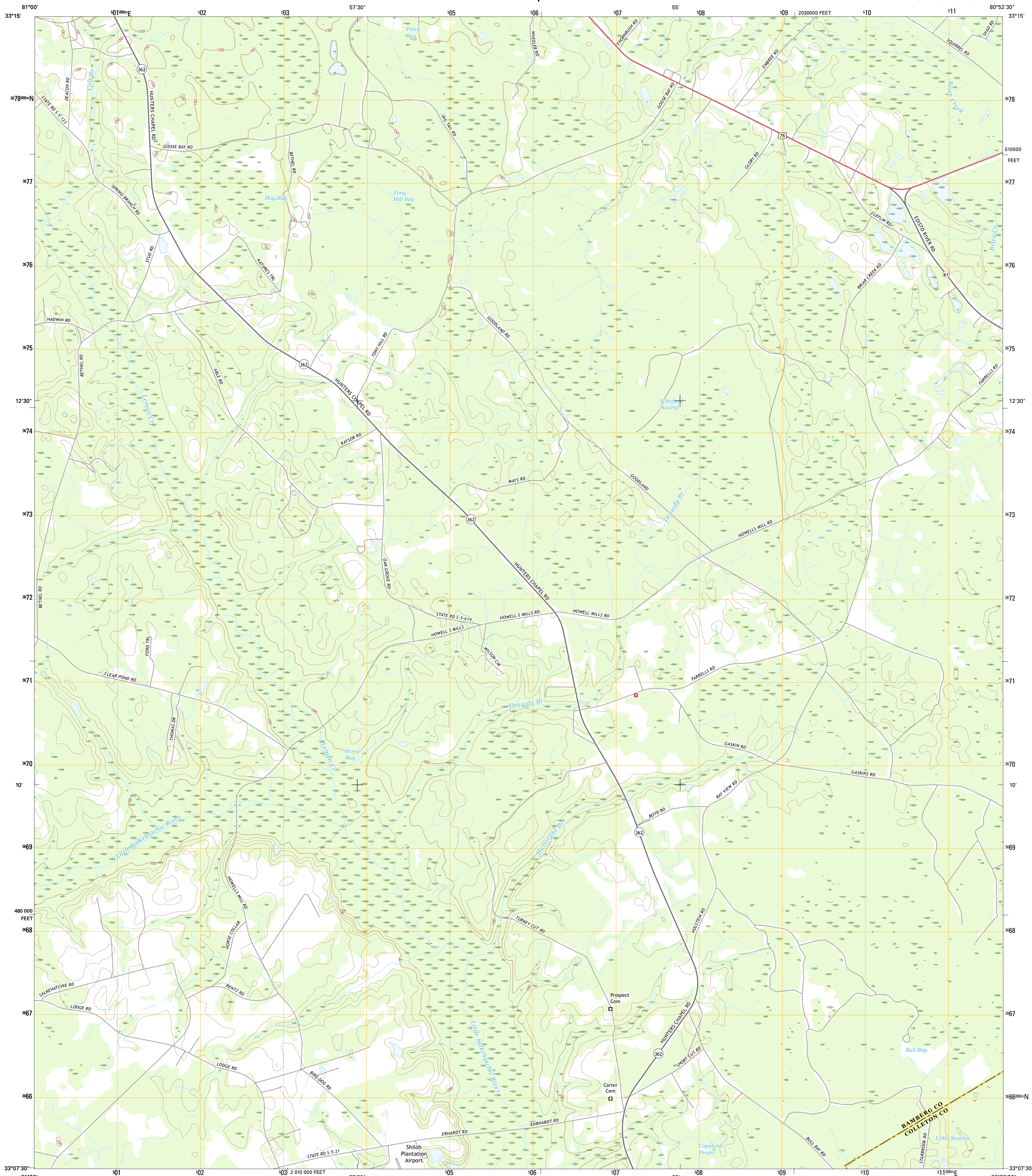




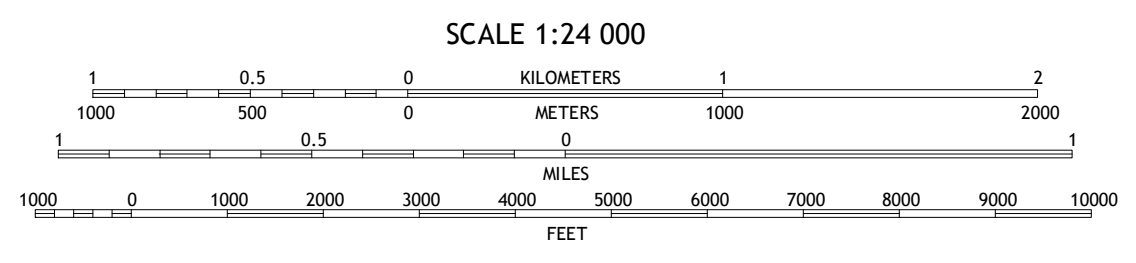
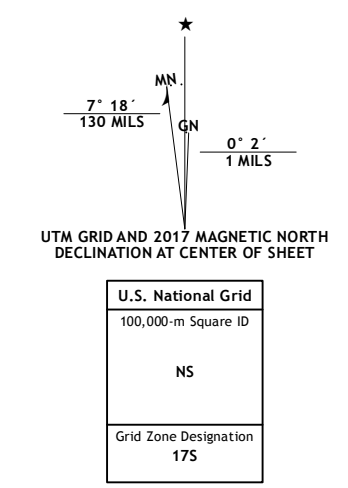
U.S. DEPARTMENT OF THE INTERIOR
U.S. GEOLOGICAL SURVEY



TONY HILL BAY QUADRANGLE
SOUTH CAROLINA
7.5-MINUTE SERIES



Produced by the United States Geological Survey
 North American Datum of 1983 (NAD83)
 World Geodetic System of 1984 (WGS84), Projection and
 1 000-meter grid: Universal Transverse Mercator, Zone 17S
 10 000-foot ticks: South Carolina Coordinate System of 1983
 This map is not a legal document. Boundaries may be
 generalized for this map scale. Private lands within government
 reservations may not be shown. Obtain permission before
 entering private lands.
 Imagery: NADP, July 2015
 Roads: U.S. Census Bureau, 2015
 Names: GNS, 2016
 Hydrography: National Hydrography Dataset, 2015
 Contours: National Elevation Dataset, 2012
 Boundaries: Multiple sources; see metadata file 1972 - 2016
 Wetlands: FWS National Wetlands Inventory 1977 - 2014



CONTOUR INTERVAL 5 FEET
 NORTH AMERICAN VERTICAL DATUM OF 1988
 This map was produced to conform with the
 National Geospatial Program US Topo Product Standard, 2011.
 A metadata file associated with this product is draft version 0.6.19



ROAD CLASSIFICATION

Expressway	Local Connector
Secondary Hwy	Local Road
Ramp	4WD
Interstate Route	US Route
	State Route

ADJOINING QUADRANGLES

1	2	3
4	5	6
7	8	

1 Bamberg
 2 Midway
 3 Branchville North
 4 Clear Pond
 5 Branchville South
 6 Ehrhardt
 7 Lodge
 8 Williams

TONY HILL BAY, SC
2017

