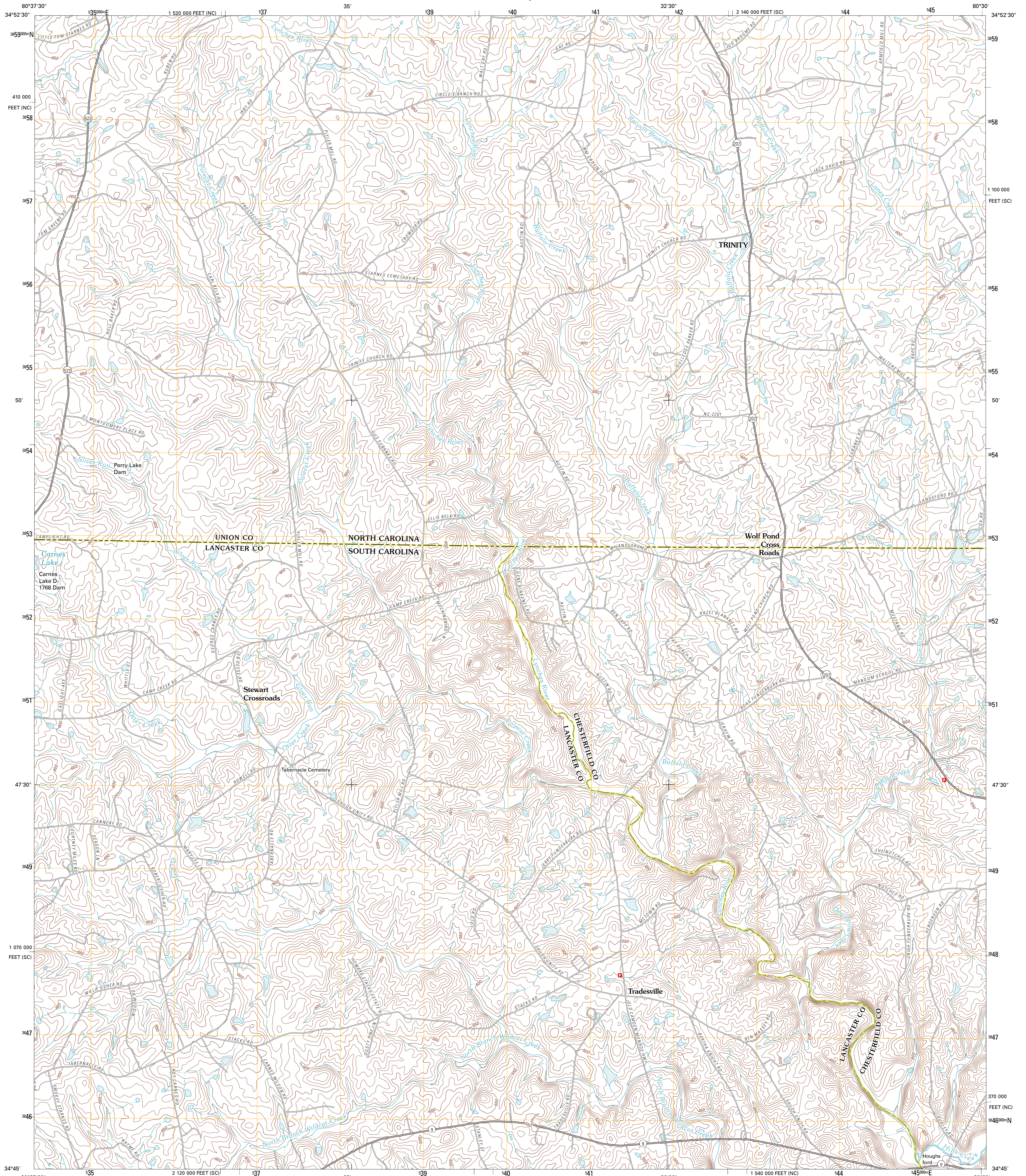




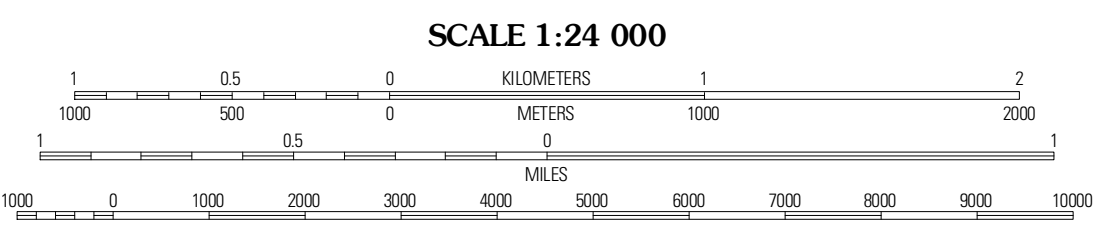
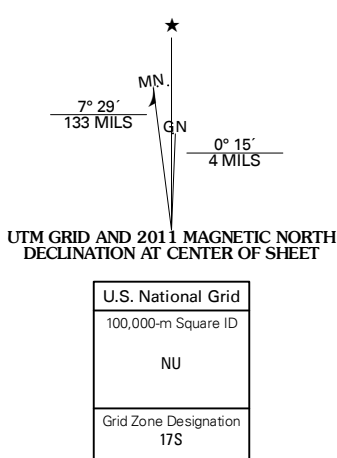
U.S. DEPARTMENT OF THE INTERIOR
U. S. GEOLOGICAL SURVEY



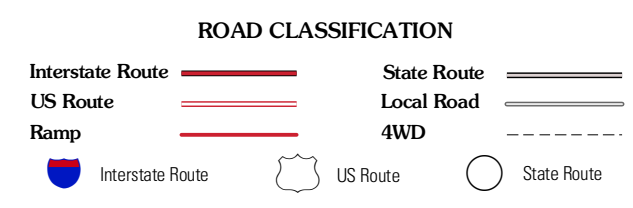
TRADESVILLE QUADRANGLE
SOUTH CAROLINA-NORTH CAROLINA
7.5-MINUTE SERIES



Produced by the United States Geological Survey
North American Datum of 1983 (NAD83)
World Geodetic System of 1984 (WGS84). Projection and
1 000-foot ticks: South Carolina Coordinate System of
1983, North Carolina Coordinate System of 1983



CONTOUR INTERVAL 10 FEET
NORTH AMERICAN VERTICAL DATUM OF 1988
This map was produced to conform with version 0.5.10
of the USGS US Topo Product Standard.
A metadata file associated with this product is draft version 0.5.16



QUADRANGLE LOCATION

Wichaw	Monroe	Whigate
Unity	Tradesville	PageLand
Antioch	Taxahaw	Jefferson

ADJOINING 7.5 QUADRANGLES

TRADESVILLE, SC-NC
2011