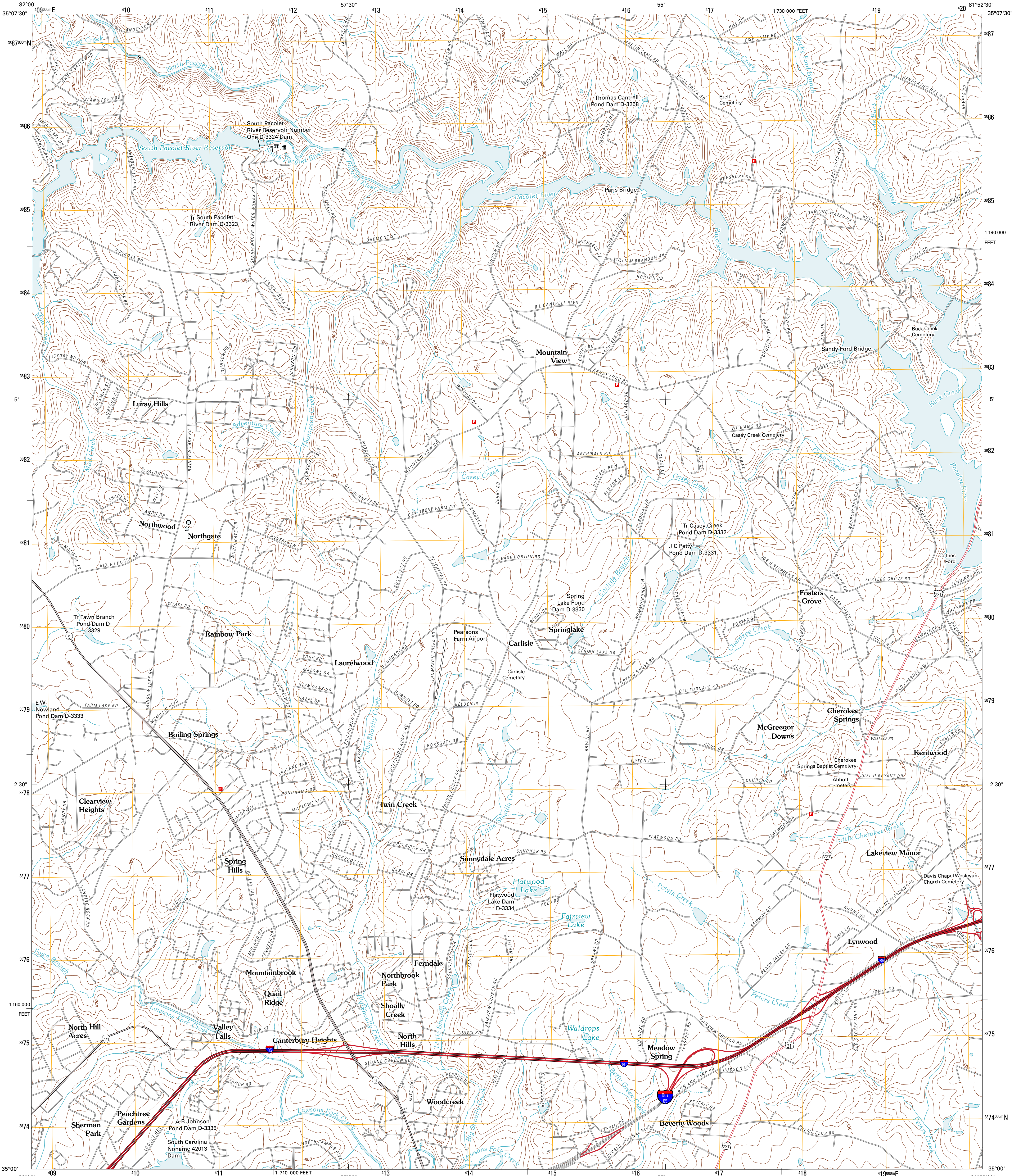




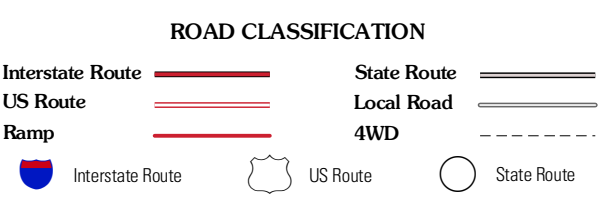
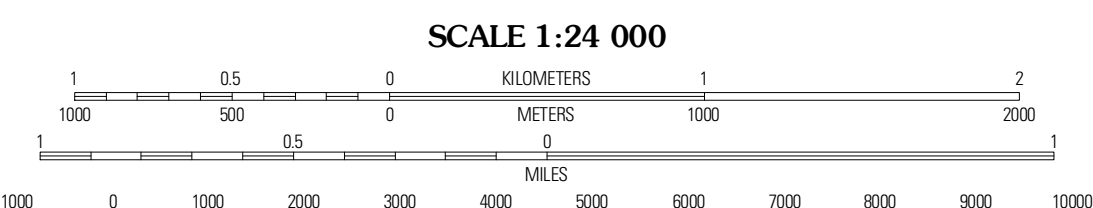
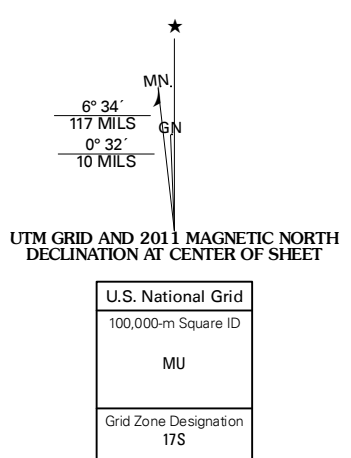
U.S. DEPARTMENT OF THE INTERIOR
U. S. GEOLOGICAL SURVEY



VALLEY FALLS QUADRANGLE
SOUTH CAROLINA-SPARTANBURG CO.
7.5-MINUTE SERIES



Produced by the United States Geological Survey
North American Datum of 1983 (NAD83)
World Geodetic System of 1984 (WGS84), Projection and
1 000-meter grid: Universal Transverse Mercator, Zone 17S
10 000-foot ticks: South Carolina Coordinate System of 1983



QUADRANGLE LOCATION

Fingerville West	Fingerville East	Chesnee
Inman	Valley Falls	Couspens
Wellford	Spartanburg	Pacolet

ADJOINING 7.5 QUADRANGLES

CONTOUR INTERVAL 20 FEET
NORTH AMERICAN VERTICAL DATUM OF 1988

This map was produced to conform with version 0.5.10 of the USGS US Topo Product Standard.
A metadata file associated with this product is draft version 0.5.16

VALLEY FALLS, SC
2011