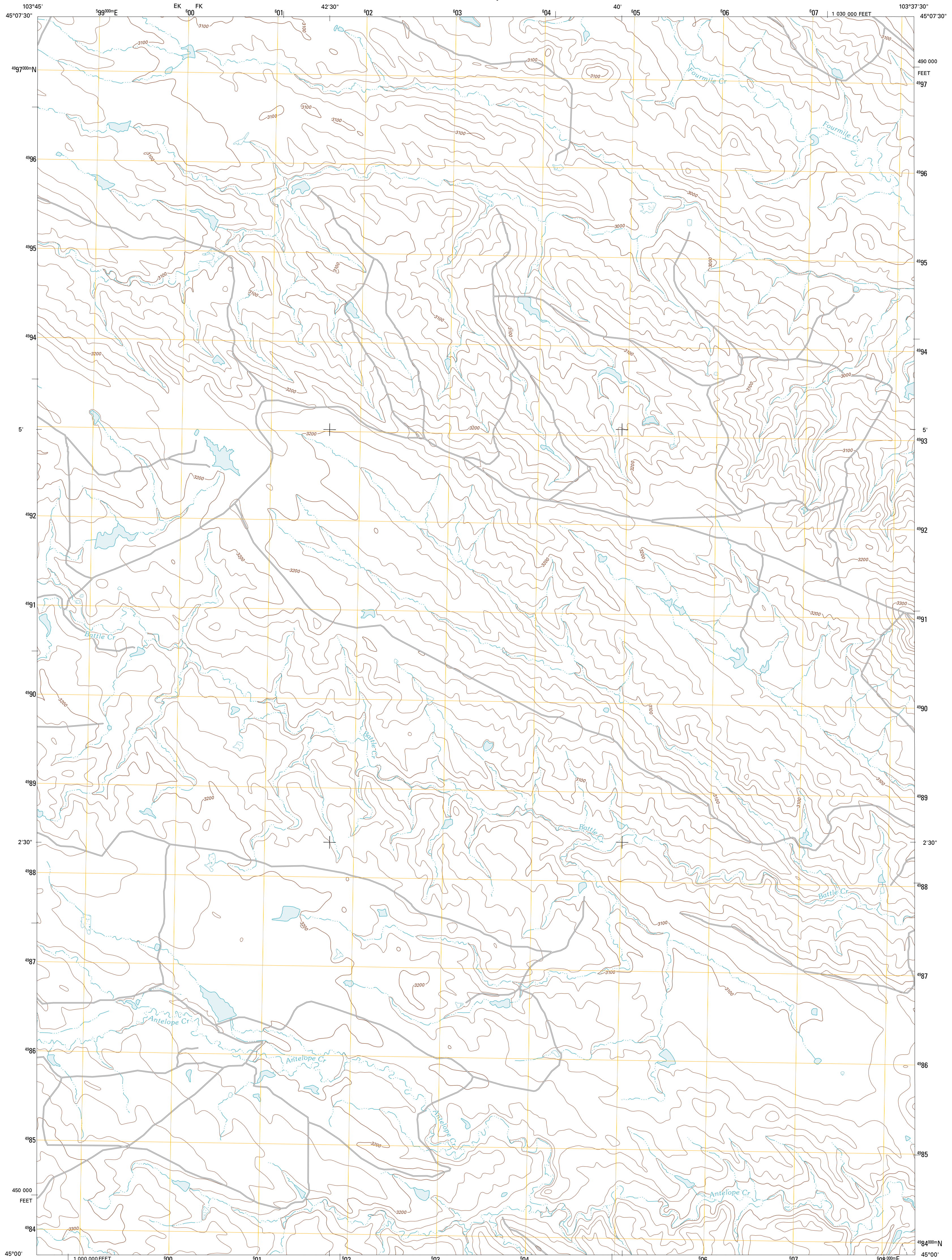




U.S. DEPARTMENT OF THE INTERIOR  
U. S. GEOLOGICAL SURVEY

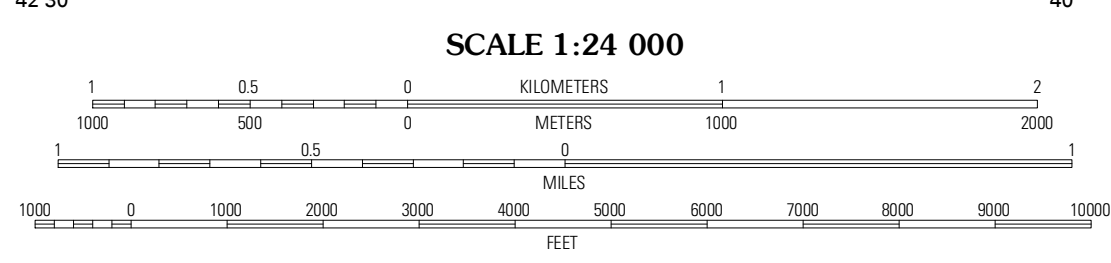
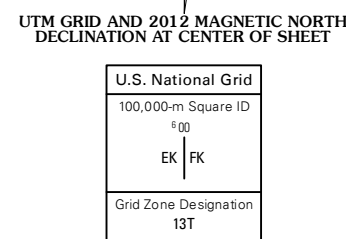


ANTELOPE CREEK WEST QUADRANGLE  
SOUTH DAKOTA-BUTTE CO.  
7.5-MINUTE SERIES

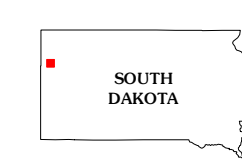


Produced by the United States Geological Survey  
North American Datum of 1983 (NAD83)  
World Geodetic System of 1984 (WGS84). Projection and  
1 000-meter grid: Universal Transverse Mercator, Zone 13T  
10 000-foot ticks: South Dakota Coordinate System of 1983  
(north zone)

Imagery.....NAIP, July 2010  
Roads.....©2006-2011 TomTom  
Names.....GNSS, 2011  
Hydrography.....National Hydrography Dataset, 2010  
Contours.....National Elevation Dataset, 2012  
Boundaries.....Census, IBWC, IBC, USGS, 1972 - 2010



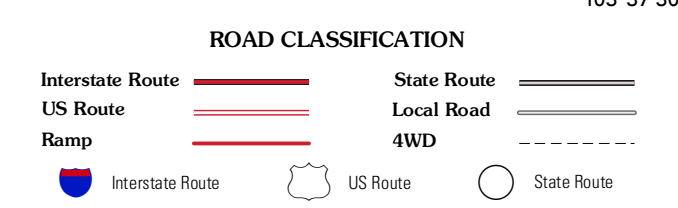
CONTOUR INTERVAL 20 FEET  
NORTH AMERICAN VERTICAL DATUM OF 1988  
This map was produced to conform with the  
National Geospatial Program US Topo Product Standard, 2011.  
A metadata file associated with this product is draft version 0.6.3



QUADRANGLE LOCATION

|                          |                         |                        |
|--------------------------|-------------------------|------------------------|
| Alkali<br>Creek<br>West  | Alkali<br>Creek<br>East | Lone Tree<br>Draw West |
| Battle<br>Creek<br>Butte | Antelope<br>Creek West  | Antelope<br>Creek East |
| Antelope<br>Butte        | Two Top<br>Butte West   | Two Top<br>Butte East  |

ADJOINING 7.5' QUADRANGLES



ANTELOPE CREEK WEST, SD  
2012