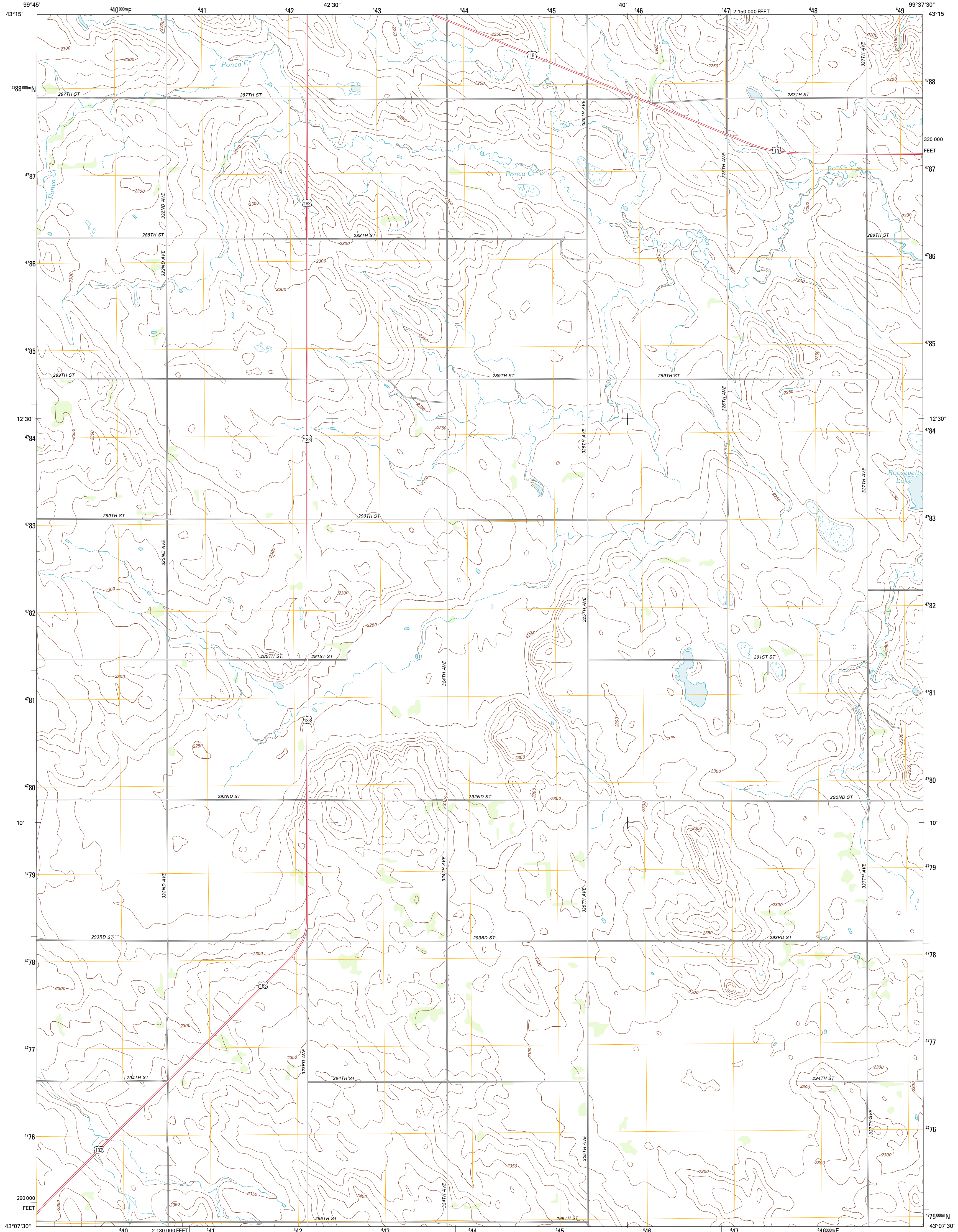




U.S. DEPARTMENT OF THE INTERIOR
U. S. GEOLOGICAL SURVEY

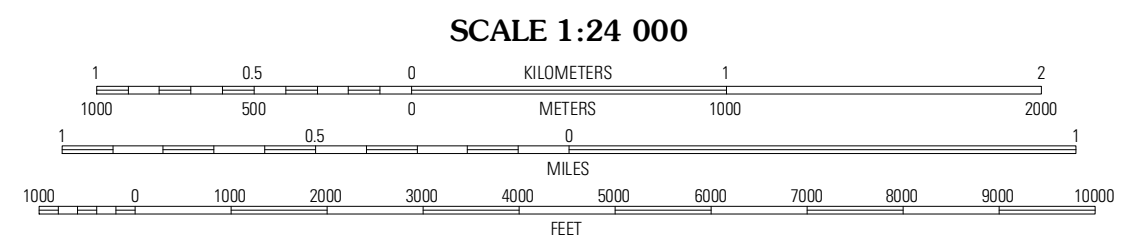
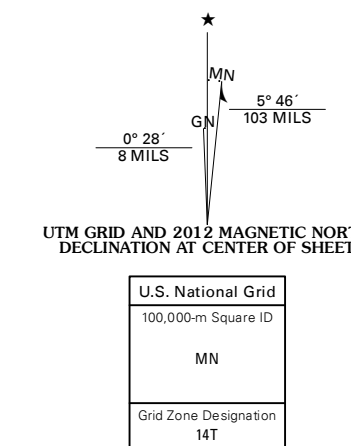


DALLAS NW QUADRANGLE
SOUTH DAKOTA-TRIPP CO.
7.5-MINUTE SERIES



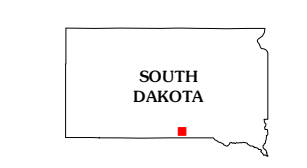
Produced by the United States Geological Survey
North American Datum of 1983 (NAD83)
World Geodetic System of 1984 (WGS84). Projection and
1 000-meter grid: Universal Transverse Mercator, Zone 14T
10 000-foot ticks: South Dakota Coordinate System of 1983
(south zone)

Imagery.....NAP, July 2010
Roads.....©2006-2011, TomTom
Names.....GNIS, 2011
Hydrography.....National Hydrography Dataset, 2010
Contours.....National Elevation Dataset, 2012
Boundaries.....Census, IBWC, IBC, USGS, 1972-2010



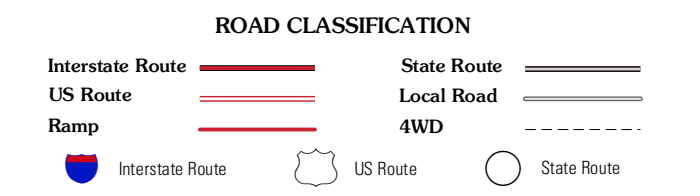
CONTOUR INTERVAL 10 FEET
NORTH AMERICAN VERTICAL DATUM OF 1988

This map was produced to conform with the
National Geospatial Program US Topo Product Standard, 2011.
A metadata file associated with this product is draft version 0.6.3



QUADRANGLE LOCATION

Winner South	Colome	Colome SE
Wewels NE	Dallas NW	Dallas
Wewels SW	Dallas SW	Paxon



DALLAS NW, SD
2012

ADJOINING 7.5 QUADRANGLES