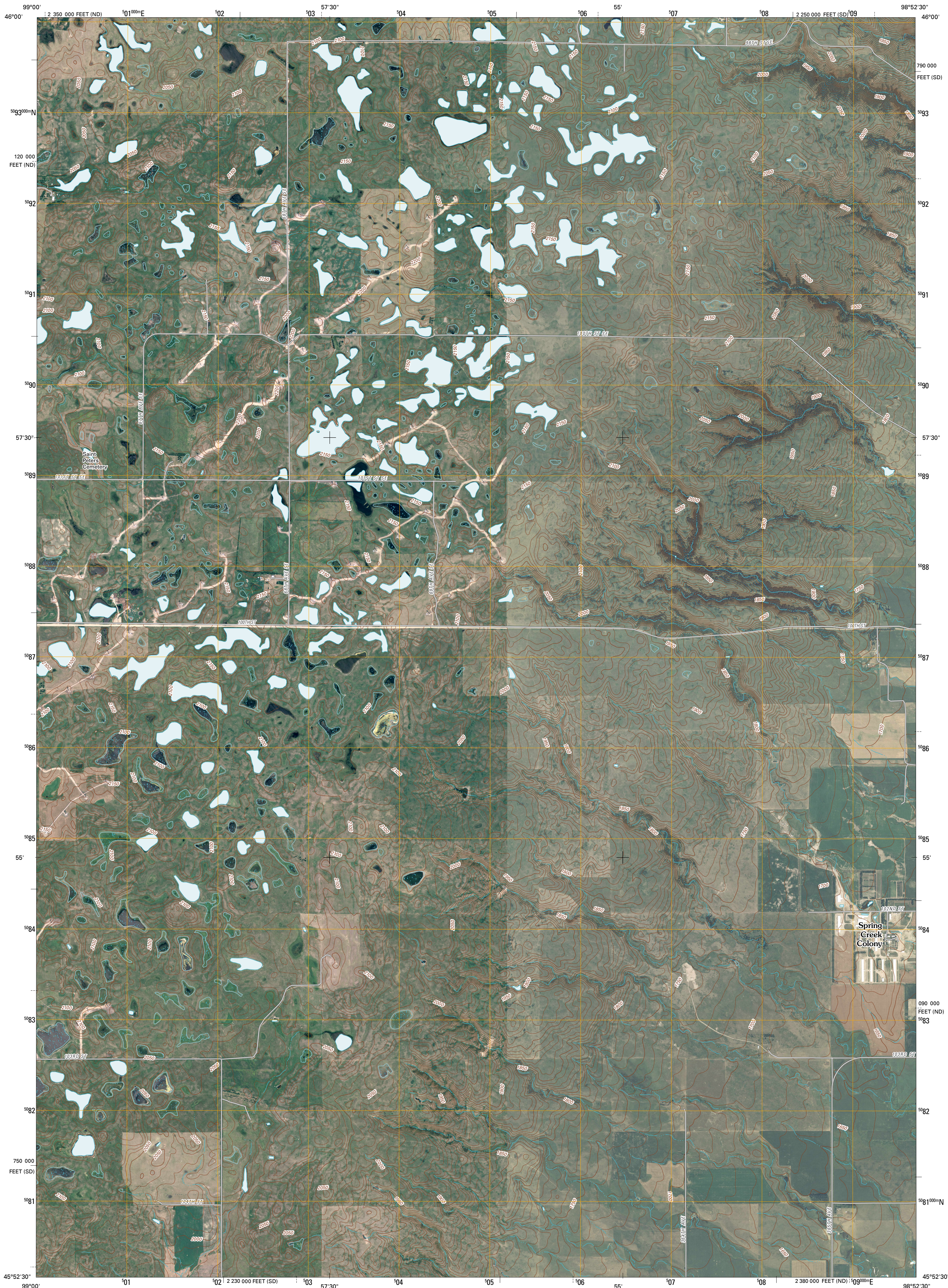




U.S. DEPARTMENT OF THE INTERIOR  
U. S. GEOLOGICAL SURVEY

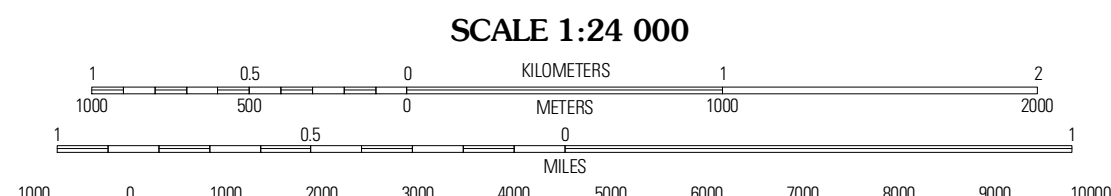
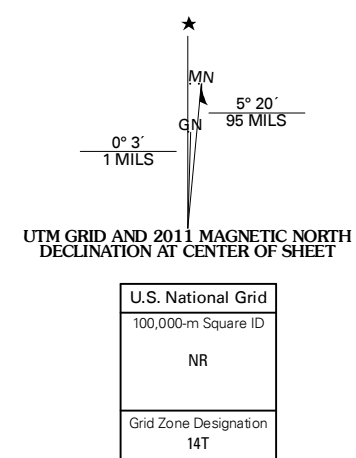


FORBES NW QUADRANGLE  
SOUTH DAKOTA-NORTH DAKOTA  
7.5-MINUTE SERIES

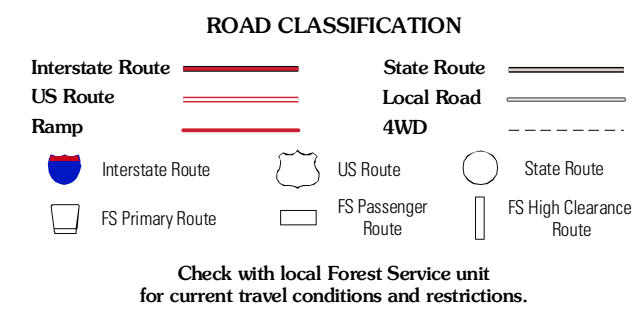
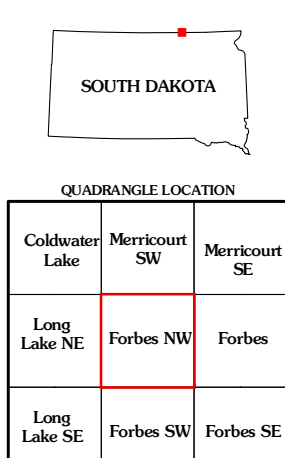


Produced by the United States Geological Survey  
North American Datum of 1983 (NAD83)  
World Geodetic System of 1984 (WGS84). Projection and  
1 000-meter grid: Universal Transverse Mercator, Zone 14T  
10 000-foot ticks: South Dakota Coordinate System of 1983  
(north zone) and North Dakota Coordinate System of 1983  
(south zone)

Imagery.....N.A.P., July 2008  
Roads.....2006-2010 Tele Atlas  
Roads within US Forest Service Lands.....FTopo Data  
with limited Forest Service updates, 2009  
Names.....GNIS, 2009  
Hydrography.....National Hydrography Dataset, 2008  
Contours.....National Elevation Dataset, 2009



CONTOUR INTERVAL 20 FEET  
NORTH AMERICAN VERTICAL DATUM OF 1988  
This map was produced to conform with version 0.5.10 of the  
draft USGS Standards for 7.5-Minute Quadrangle Maps.  
A metadata file associated with this product is draft version 0.5.13



FORBES NW, SD-ND  
2011

Check with local Forest Service unit  
for current travel conditions and restrictions.