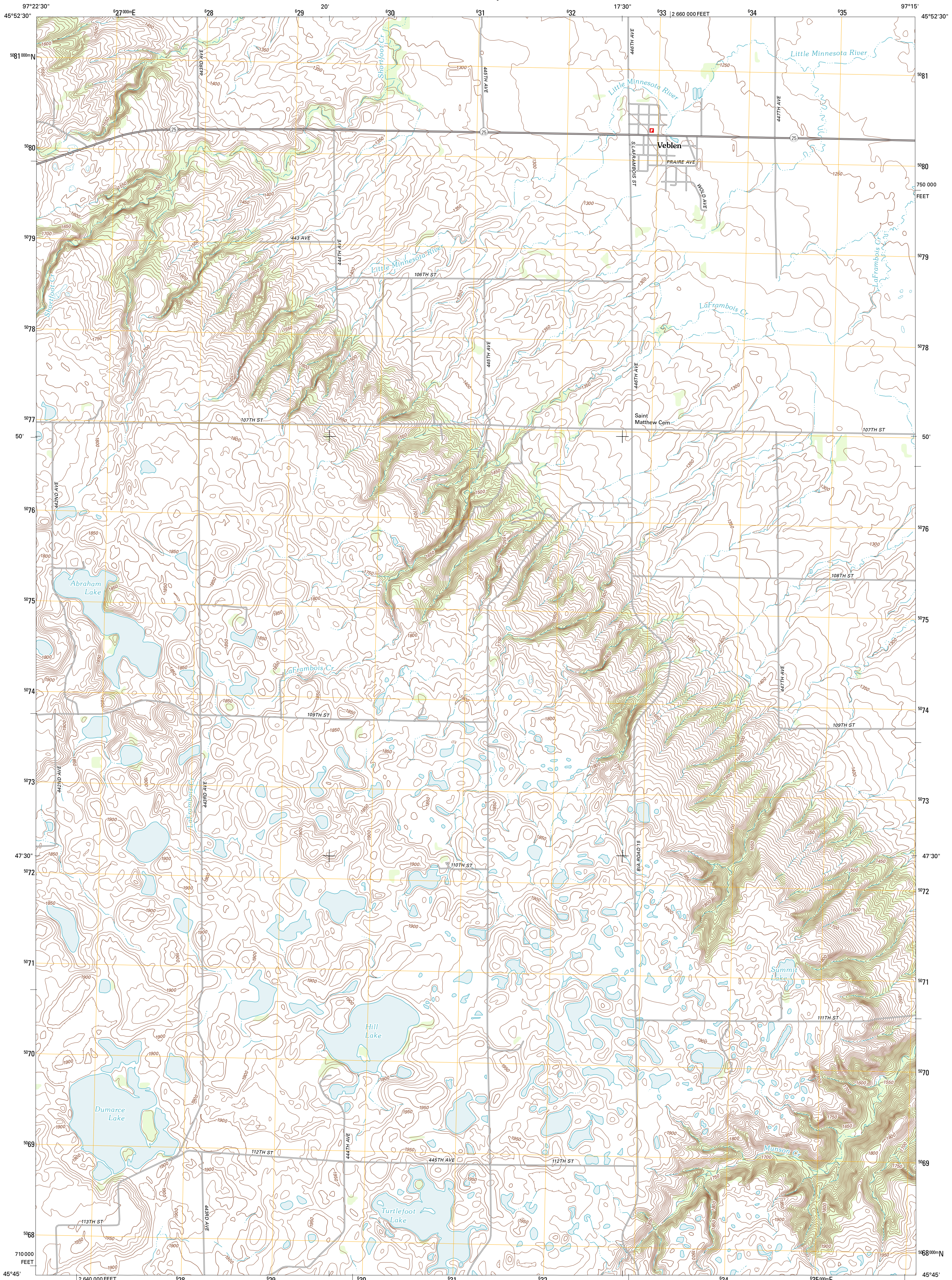




U.S. DEPARTMENT OF THE INTERIOR  
U. S. GEOLOGICAL SURVEY

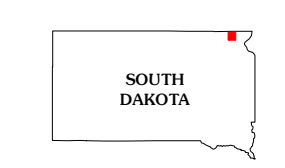
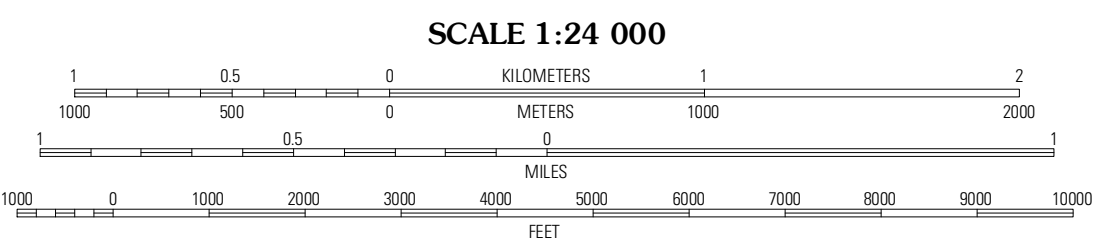
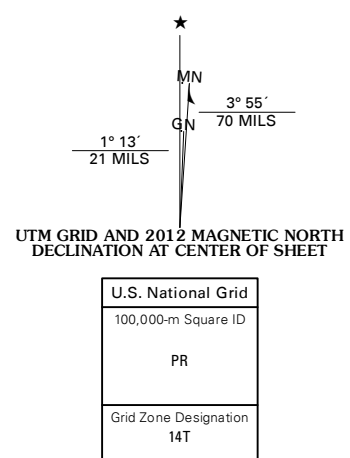


VEBLEN QUADRANGLE  
SOUTH DAKOTA-MARSHALL CO.  
7.5-MINUTE SERIES



Produced by the United States Geological Survey  
North American Datum of 1983 (NAD83)  
World Geodetic System of 1984 (WGS84). Projection and  
1 000-meter grid: Universal Transverse Mercator, Zone 14T  
10 000-foot ticks: South Dakota Coordinate System of 1983  
(north zone)

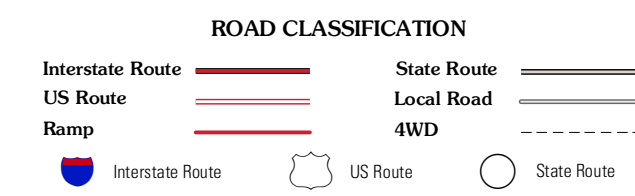
Imagery.....NAIP, August 2010  
Roads.....©2006-2011 TomTom  
Names.....GNIS, 2011  
Hydrography.....National Hydrography Dataset, 2010  
Contours.....National Elevation Dataset, 1999  
Boundaries.....Census, BWC, BIC, USGS, 1972 - 2010



QUADRANGLE LOCATION

Marlow	Veblen NE	Clare City NW
Hillhead	Veblen	Clare City SW
Lake City	South Red Iron Lake	Whitestone Lake

ADJOINING 7.5' QUADRANGLES



CONTOUR INTERVAL 10 FEET  
NORTH AMERICAN VERTICAL DATUM OF 1988

This map was produced to conform with the  
National Geospatial Program US Topo Product Standard, 2011.  
A metadata file associated with this product is draft version 0.6.3

VEBLEN, SD  
2012