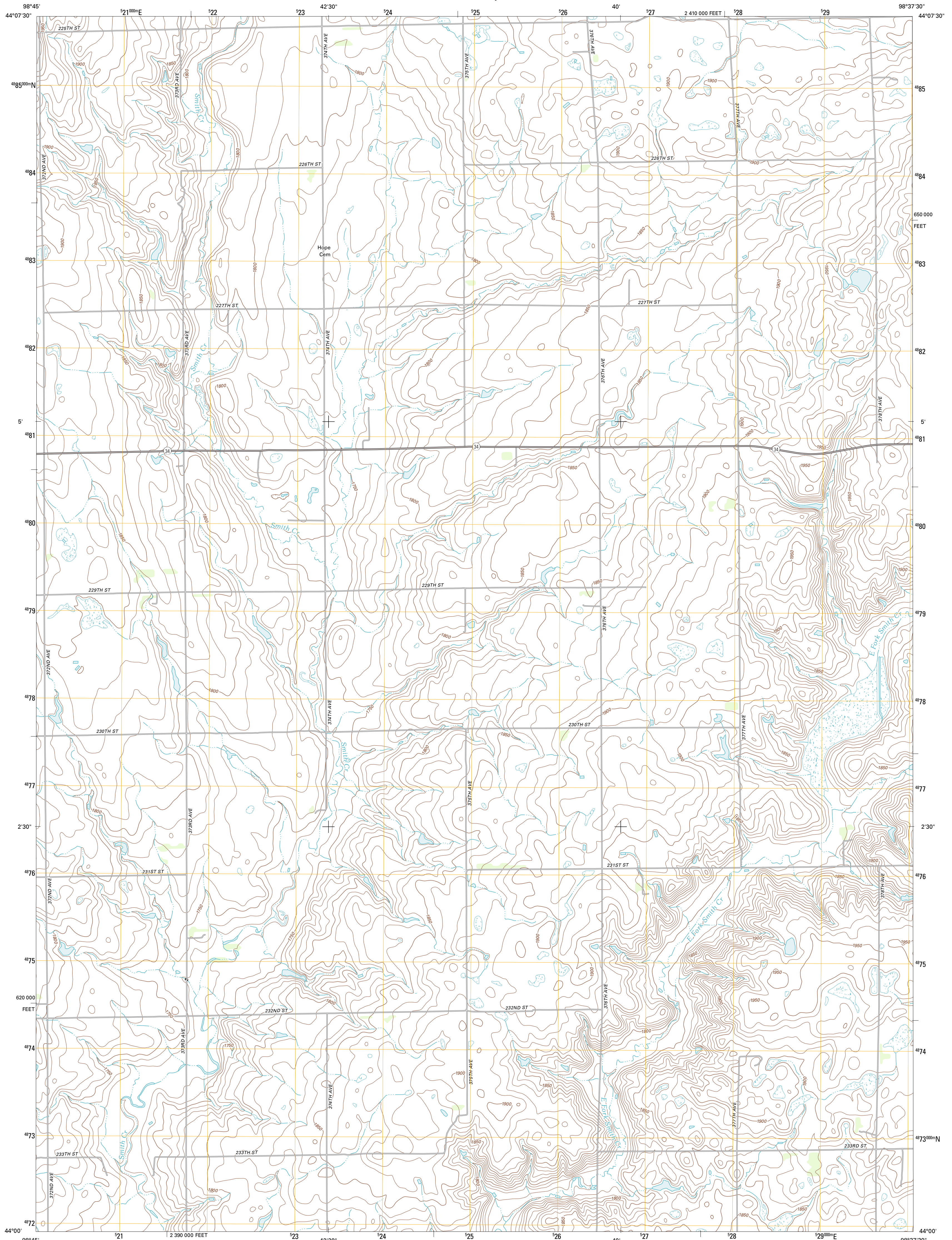




U.S. DEPARTMENT OF THE INTERIOR  
U. S. GEOLOGICAL SURVEY

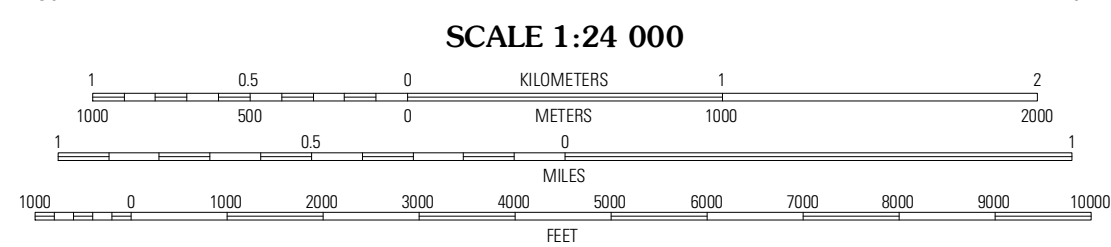
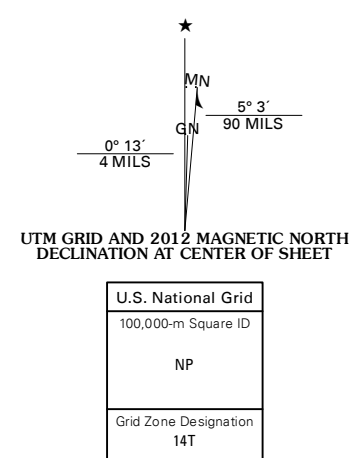


WESSINGTON SPRINGS SW QUADRANGLE  
SOUTH DAKOTA-JERAULD CO.  
7.5-MINUTE SERIES

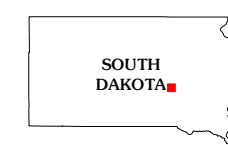


Produced by the United States Geological Survey  
North American Datum of 1983 (NAD83)  
World Geodetic System of 1984 (WGS84). Projection and  
1 000-meter grid: Universal Transverse Mercator, Zone 14T  
10 000-foot ticks: South Dakota Coordinate System of 1983  
(south zone)

Imagery.....NAIP, August 2010  
Roads.....©2006-2011, TomTom  
Names.....National Hydrography Dataset, 2011  
Hydrography.....National Elevation Dataset, 2010  
Contours.....National Elevation Dataset, 1999  
Boundaries.....Census, IBIC, IBC, USGS, 1972 - 2010



SCALE 1:24 000  
CONTOUR INTERVAL 10 FEET  
NORTH AMERICAN VERTICAL DATUM OF 1988  
This map was produced to conform with the  
National Geospatial Program US Topo Product Standard, 2011.  
A metadata file associated with this product is draft version 0.6.3



QUADRANGLE LOCATION

Cottonwood Lake	Wessington Springs NW	Wessington Springs NE
Garrettsville SE	Wessington Springs SW	Wessington Springs
Idham Lake	Crow Lake	Hoagland Lake

ADJOINING 7.5' QUADRANGLES

ROAD CLASSIFICATION

- Interstate Route
- US Route
- Ramp
- State Route
- Local Road
- 4WD

WESSINGTON SPRINGS SW, SD  
2012