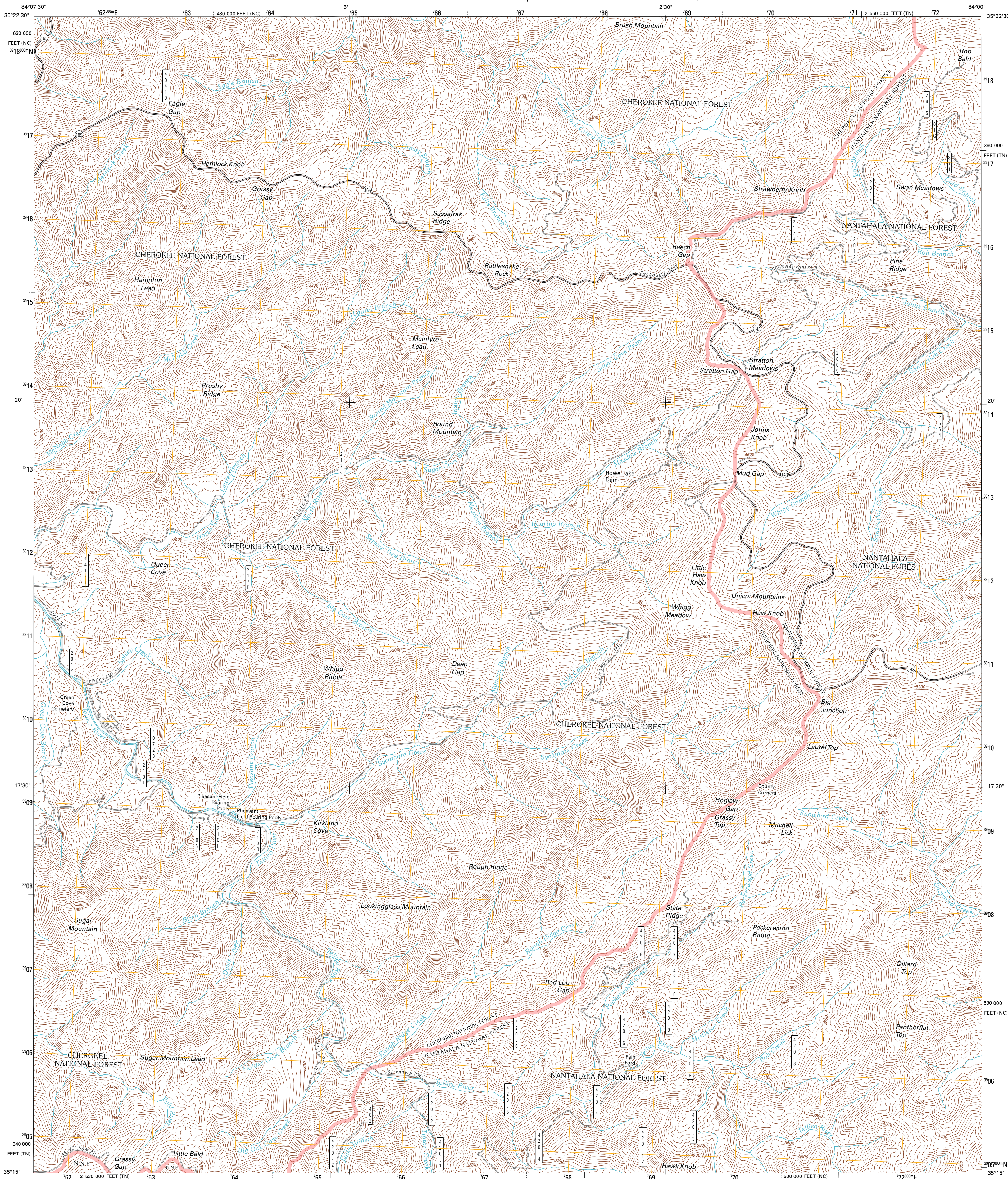




U.S. DEPARTMENT OF THE INTERIOR
U. S. GEOLOGICAL SURVEY



BIG JUNCTION QUADRANGLE
TENNESSEE-NORTH CAROLINA
7.5-MINUTE SERIES

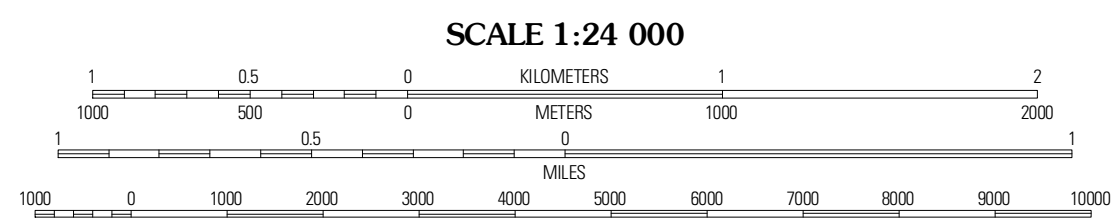


Produced by the United States Geological Survey
North American Datum of 1983 (NAD83)
World Geodetic System of 1984 (WGS84) Projection and
1 000-meter grid; Universal Transverse Mercator, Zone 16S
10 000-foot ticks; Tennessee Coordinate System of 1983,
North Carolina Coordinate System of 1983

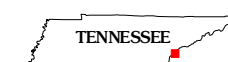
Imagery:.....NAIP, April 2010
Roads:.....©2006-2010 Tele Atlas
Roads within US Forest Service Lands:.....FSTopo Data
with limited Forest Service updates, 2009
Names:.....GNS, 2010
Hydrography:.....National Hydrography Dataset, 2010
Contours:.....National Elevation Dataset, 2008

UTM GRID AND 2011 MAGNETIC NORTH
DECLINATION AT CENTER OF SHEET

U.S. National Grid
100,000-m Square ID
GE
Grid Zone Designation
16S



CONTOUR INTERVAL 40 FEET
NORTH AMERICAN VERTICAL DATUM OF 1988
This map was produced to conform with version 0.5.10 of the
draft USGS Standards for 7.5-Minute Quadrangle Maps.
A metadata file associated with this product is draft version 0.5.12



QUADRANGLE LOCATION		
Rafter	Whitesink Flats	Tapoco
Bald River Falls	Big Junction	Santeehah Creek
Unaka	McDaniel Bald	Marble

ROAD CLASSIFICATION

Interstate Route	State Route
US Route	Local Road
Ramp	4WD

Interstate Route
US Route
FS Primary Route
FS Passenger Route
FS High Clearance Route

Check with local Forest Service unit
for current travel conditions and restrictions.

BIG JUNCTION, TN-NC
2011

ADJOINING 7.5 QUADRANGLES