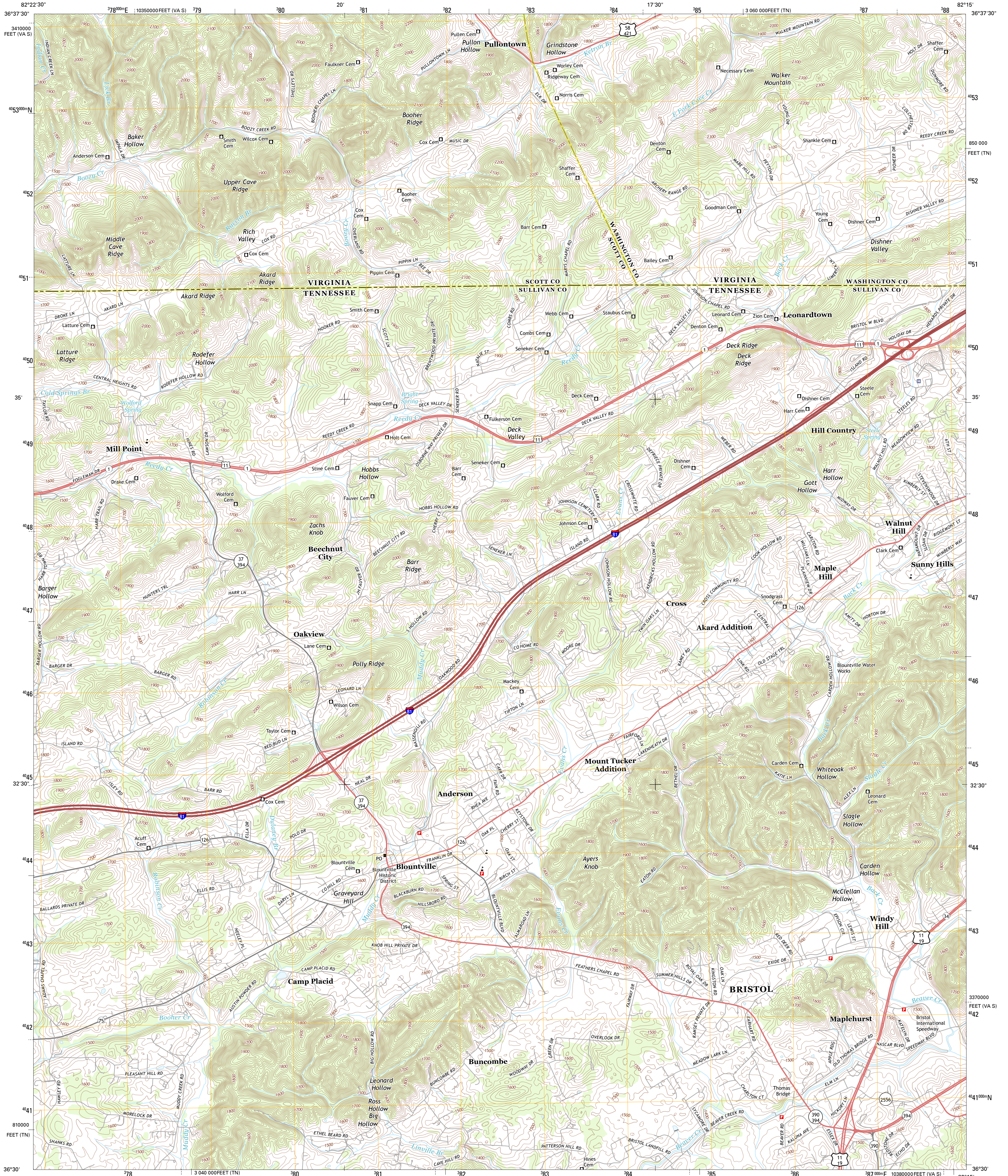




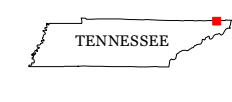
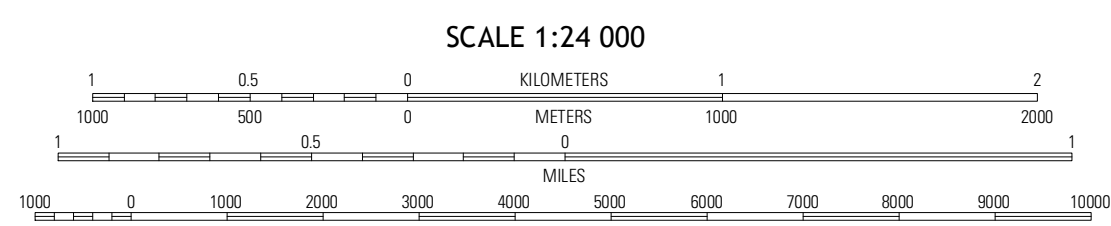
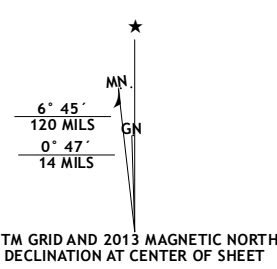
U.S. DEPARTMENT OF THE INTERIOR
U. S. GEOLOGICAL SURVEY



BLOUNTVILLE QUADRANGLE
TENNESSEE-VIRGINIA
7.5-MINUTE SERIES

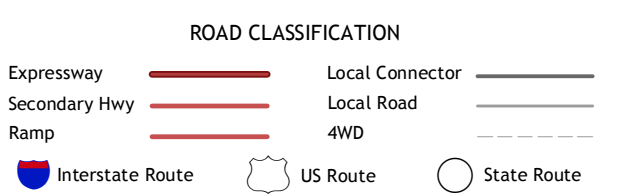


Produced by the United States Geological Survey
North American Datum of 1983 (NAD83)
World Geodetic System of 1984 (WGS84). Projection and
1 000-meter grid: Universal Transverse Mercator, Zone 17S
10 000-foot ticks: Tennessee Coordinate System of 1983,
Virginia Coordinate System of 1983 (south zone)



QUADRANGLE LOCATION

Hilton	Mendon	Wallace
Indian Springs	Blountville	Bristol
Boone Dam	Bluff City	Keesbark



BLOUNTVILLE, TN-VA
2013

ADJOINING 7.5 QUADRANGLES